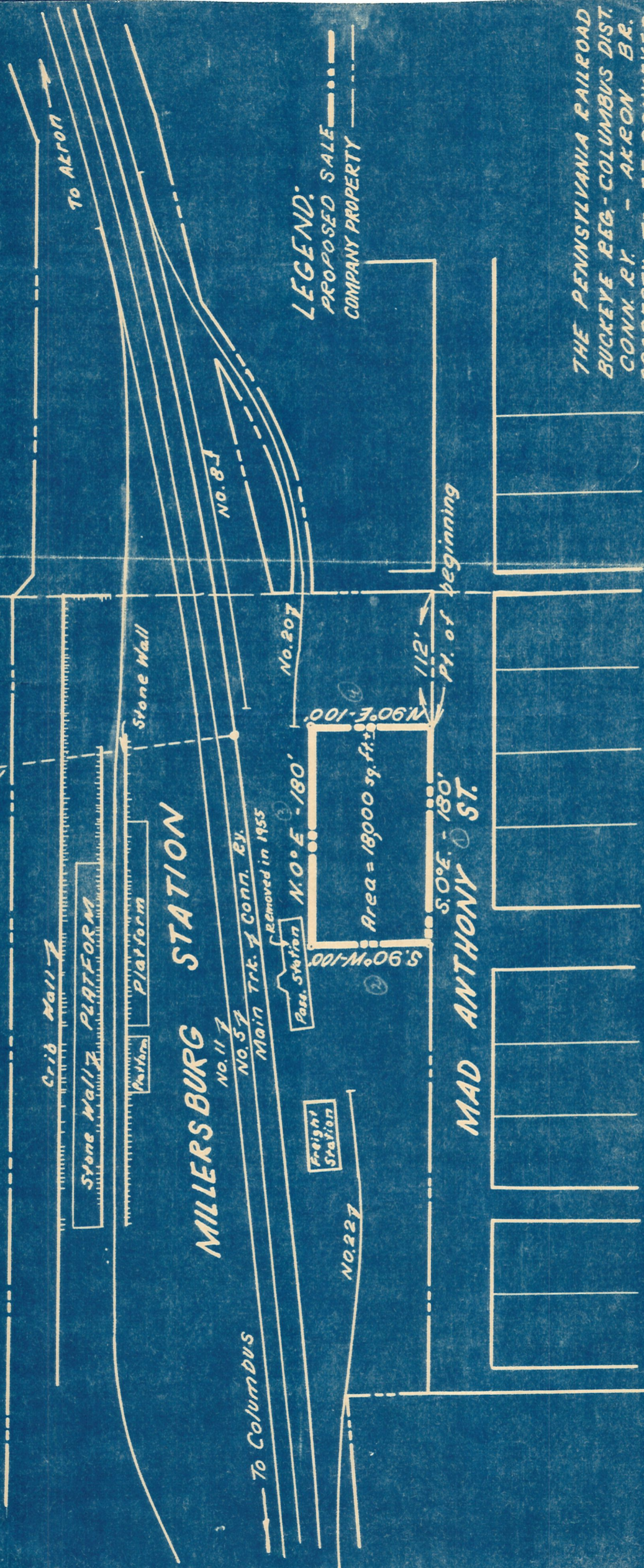


*Penna R.R. to Holmes Co Farm Bureau Inc
7/20/57*

18
1M-13XB-W
1-9-48

REAL ESTATE DEPT RECORD
DRAWER.....ATLAS.....ROLL MAP.....MAP 60
CASE NUMBER 53904

SECTION 19
T.9, R.7
SECTION 12
T.9, R.7



LEGEND:
PROPOSED SALE
COMPANY PROPERTY

THE PENNSYLVANIA RAILROAD
BUCKEYE REG. - COLUMBUS DIST.
CONN. RY. - AKRON BR.
PROPERTY TO BE CONVEYED
BY
THE CONNECTING RAILWAY COMPANY
TO
HOLMES COUNTY FARM BUREAU
COOPERATIVE ASSOCIATION, INCORPORATED
SCALE 1 IN. = 100'. DATE 9.21.56
MADE BY J.E. CHECKED BY JAMP

APPROVED *H. M. ...*
REGIONAL ENGINEER

PART OF N.W. ¼ OF SEC. 19, T.9, R.7
LOCATION: VALUATION SECTION NO. 10-OHIO ~ MAP 34
VILLAGE OF MILLERSBURG BOROUG
TOWNSHIP (HARRIS) COUNTY HOLMES STATE OHIO