



SCALE: 1"=200'

- 5/8" REBAR FOUND UNLESS OTHERWISE NOTED
- 5/8" REBAR WITH I.D. CAP SET I.D. CAP MARKED "BAKER 6938"

REFERENCES:

- DEED VOL. 230 PAGE 460
- DEED VOL. 98 PAGE 489
- DEED VOL. 137 PAGE 349
- DEED VOL. 132 PAGE 511
- DEED VOL. 188 PAGE 490
- DEED VOL. 279 PAGE 556
- PLAT VOL. 4 PAGE 163
- PLAT VOL. 16 PAGE 515
- PLAT VOL. 15 PAGE 162

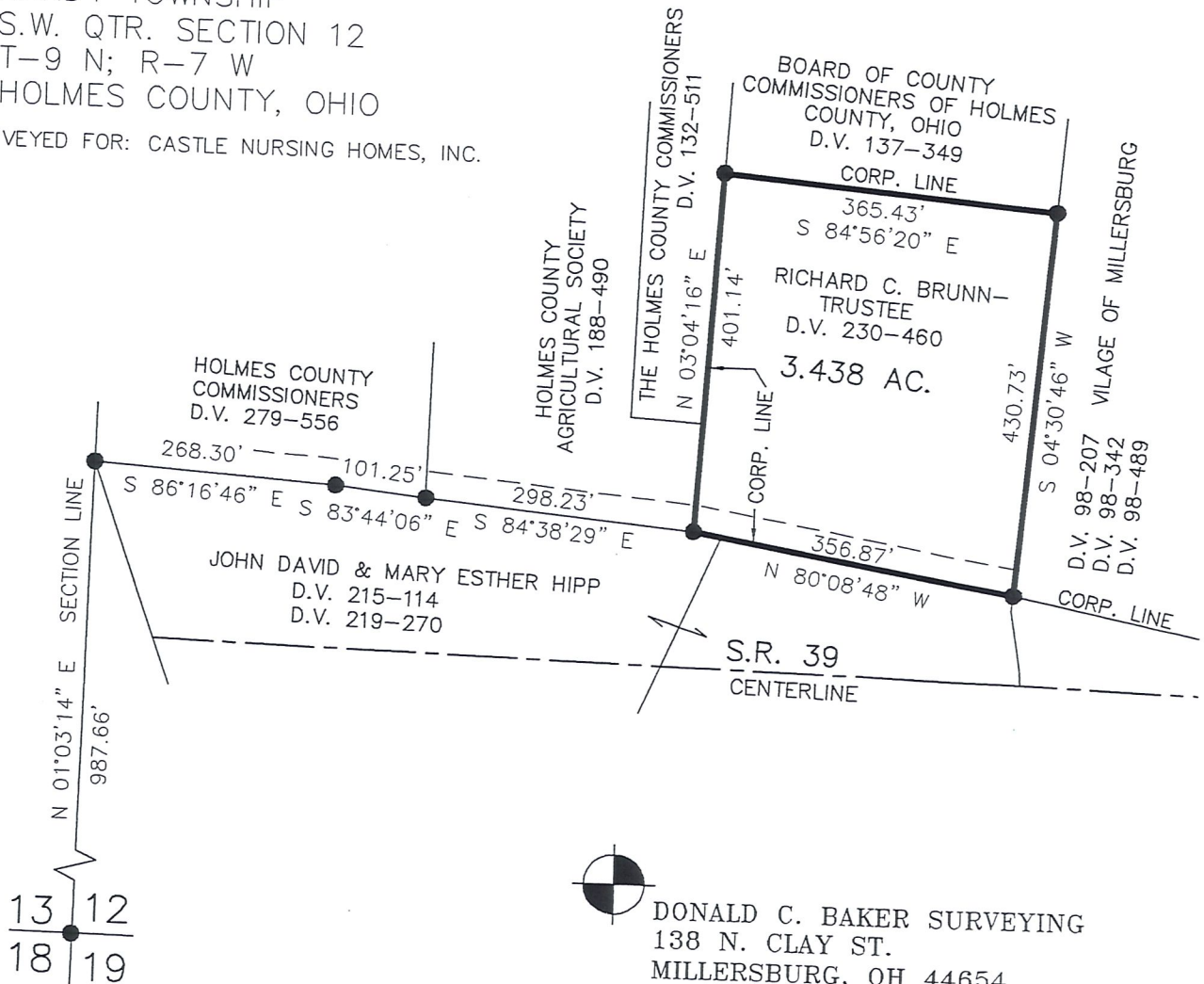
BEARINGS FROM PLAT VOL. 15 PAGE 162



I CERTIFY THIS SURVEY TO BE CORRECT TO THE BEST OF MY KNOWLEDGE.

Donald C. Baker
 DONALD C. BAKER PS 6938
 JDD\ERZ DATE: APRIL 7, 2005
 File Name: C:\JOBS\S-94-A5

VILLAGE OF MILLERSBURG
 HARDY TOWNSHIP
 S.W. QTR. SECTION 12
 T-9 N; R-7 W
 HOLMES COUNTY, OHIO
 SURVEYED FOR: CASTLE NURSING HOMES, INC.



DONALD C. BAKER SURVEYING
 138 N. CLAY ST.
 MILLERSBURG, OH 44654
 PH. 330-674-4788
 FAX: 330-674-6027