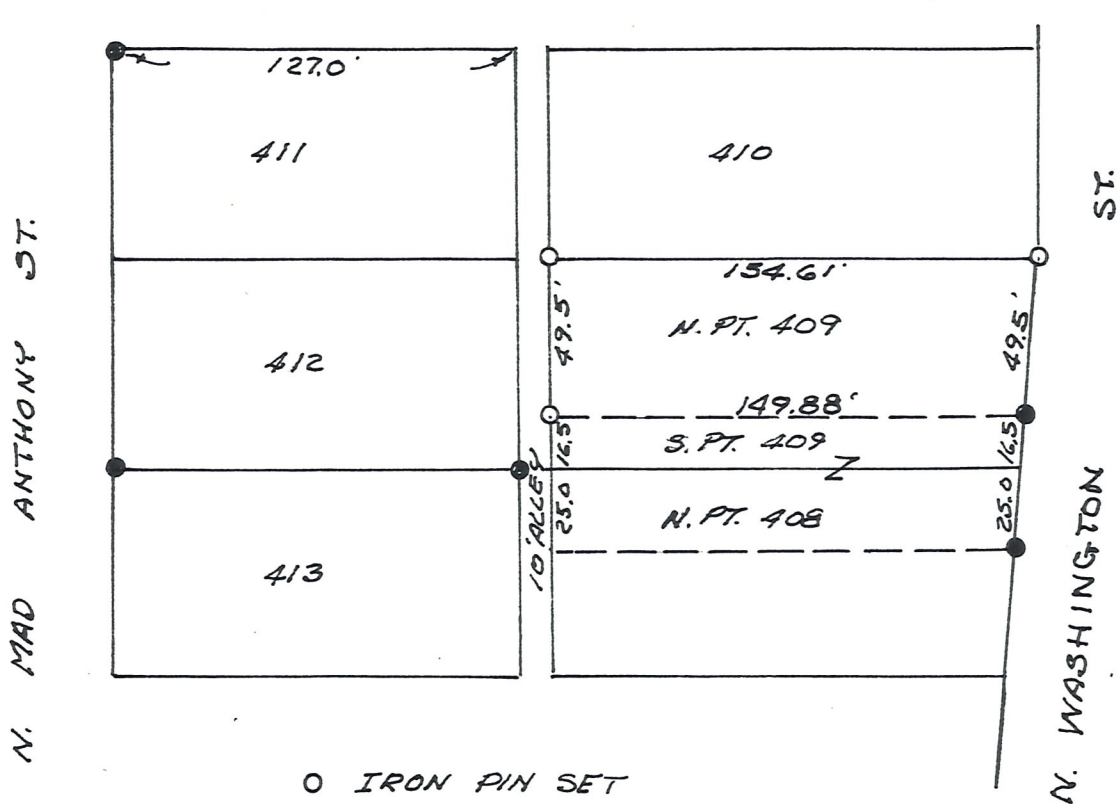


SURVEY OF NORTH PART INLOT #409
VILLAGE OF MILLERSBURG.
HOLMES COUNTY
OHIO

JAN. 1975



- IRON PIN SET
- IRON PIN FOUND

I HEREBY CERTIFY THIS SURVEY TO BE
CORRECT TO THE BEST OF MY KNOWLEDGE.

Clyde E. Purdy
CLYDE E. PURDY R.S.#4900

PURDY & McCULLOUGH INC
320 W. HIGH ST.
ORRVILLE, O.

SCALE 1" = 60'