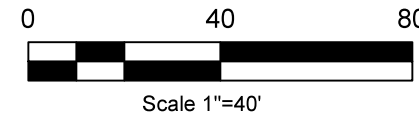
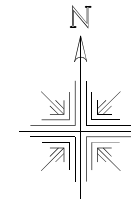


**Village of Millersburg
Part of Outlot 123
Hardy Township
1st Qtr. Lot 42
T-9 N; R-7 W
Holmes County, Ohio**

SURVEYED FOR: Brad Maxwell

Note: The pin found at "C" is from Plat Vol. 9 Page 88 and Plat Vol. 2 Page 132 and was set by Kasner in 1968. Kasner calculated a point at the northeast corner of O.L. 123, "B", but he never established said northeast corner with a pin. A pipe was set by Gute in 1975 in Plat Vol. 6 Page 160, this pipe has been held as the corner since by surveys from Baker in 1990 and 1991 (Plat Vol. 12 Page 494, Plat 12 Page 744) and Gasbarre in 1988 (Plat Vol. 12 Page 42) and 1990 (Plat Vol. Page 13 Page 116). I chose to hold the north line of O.L. 123 straight from point "A" to "B" as done by Gasbarre in 1988 and 1990 and in doing so also holding the pipe set by Gute in 1975 (Plat Vol. 6 Page 60) at the northeast corner of O.L. 123.



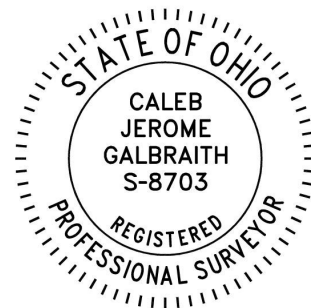
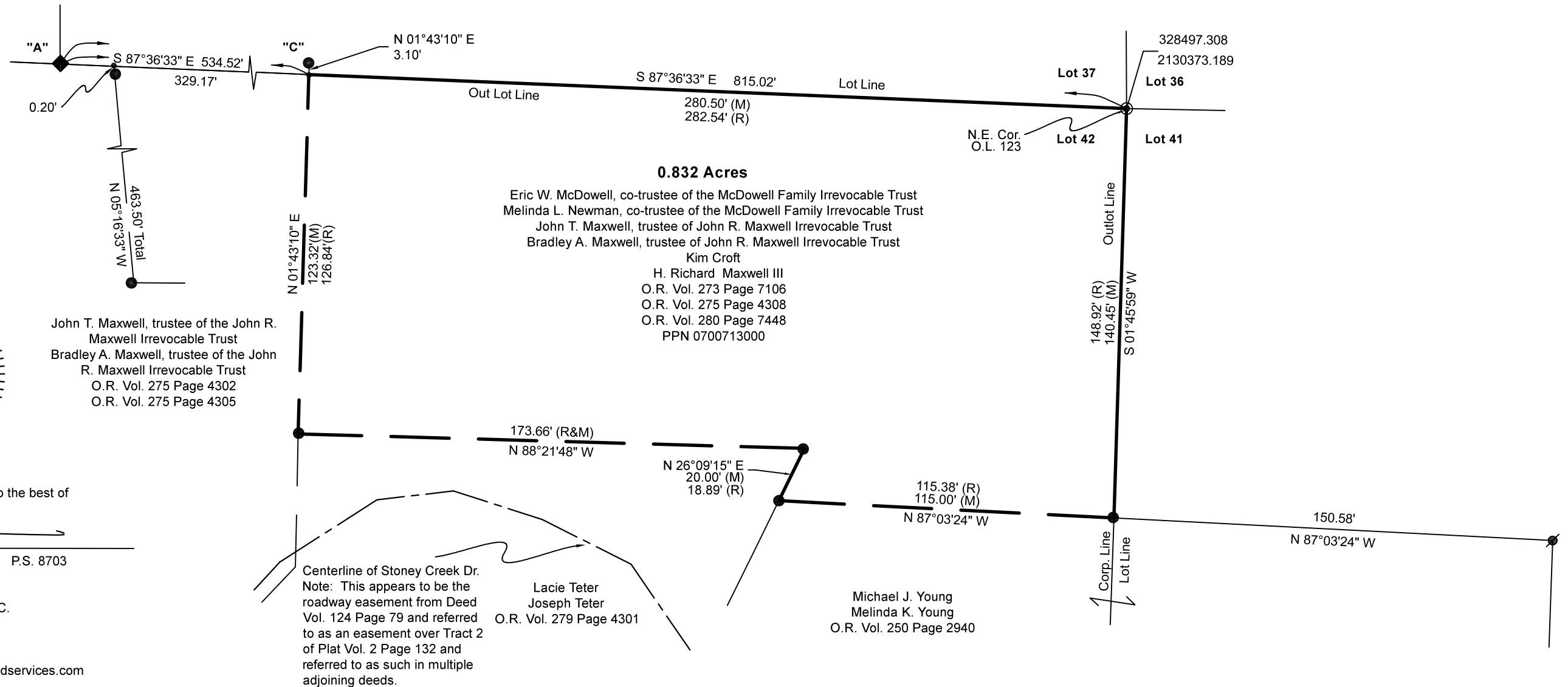
- ⊙ Pipe Found
- 5/8" Rebar Found
- ⊖ 5/8" Rebar Found Capped "Baker"
- ◆ 2" Bar Found
- Point

REFERENCES:

Deeds as shown

- Plat Vol. 12 Page 494
- Plat Vol. 12 Page 042
- Plat Vol. 12 Page 744
- Plat Vol. 13 Page 116
- Plat Vol. 04 Page 20
- Plat Vol. 02 Page 132
- Plat Vol. 09 Page 88
- Plat Vol. 19 Page 862
- Plat Vol. 06 Page 60

Basis of Bearing from Ohio State Plane Coordinate System, North Zone, NAD 83 (2011). Distances shown hereon are distances by scale factor of 0.9999336319.



I certify this survey to be correct to the best of my knowledge.

Caleb Galbraith

Caleb Jerome Galbraith P.S. 8703
Date: Jan. 31, 2025
Job ID: 3225
Pioneer Surveying & Services, LLC.
5434 Township Road 377
Millersburg, Ohio 44654
Phone: 330-231-0497
Email: caleb@pioneersurveyingandservices.com

