

**VILLAGE OF MILLERSBURG
HARDY TOWNSHIP, HOLMES COUNTY, OHIO
PART OF D.L. 122 IN LOT 42, 1ST QTR, T-9N, R-7W**

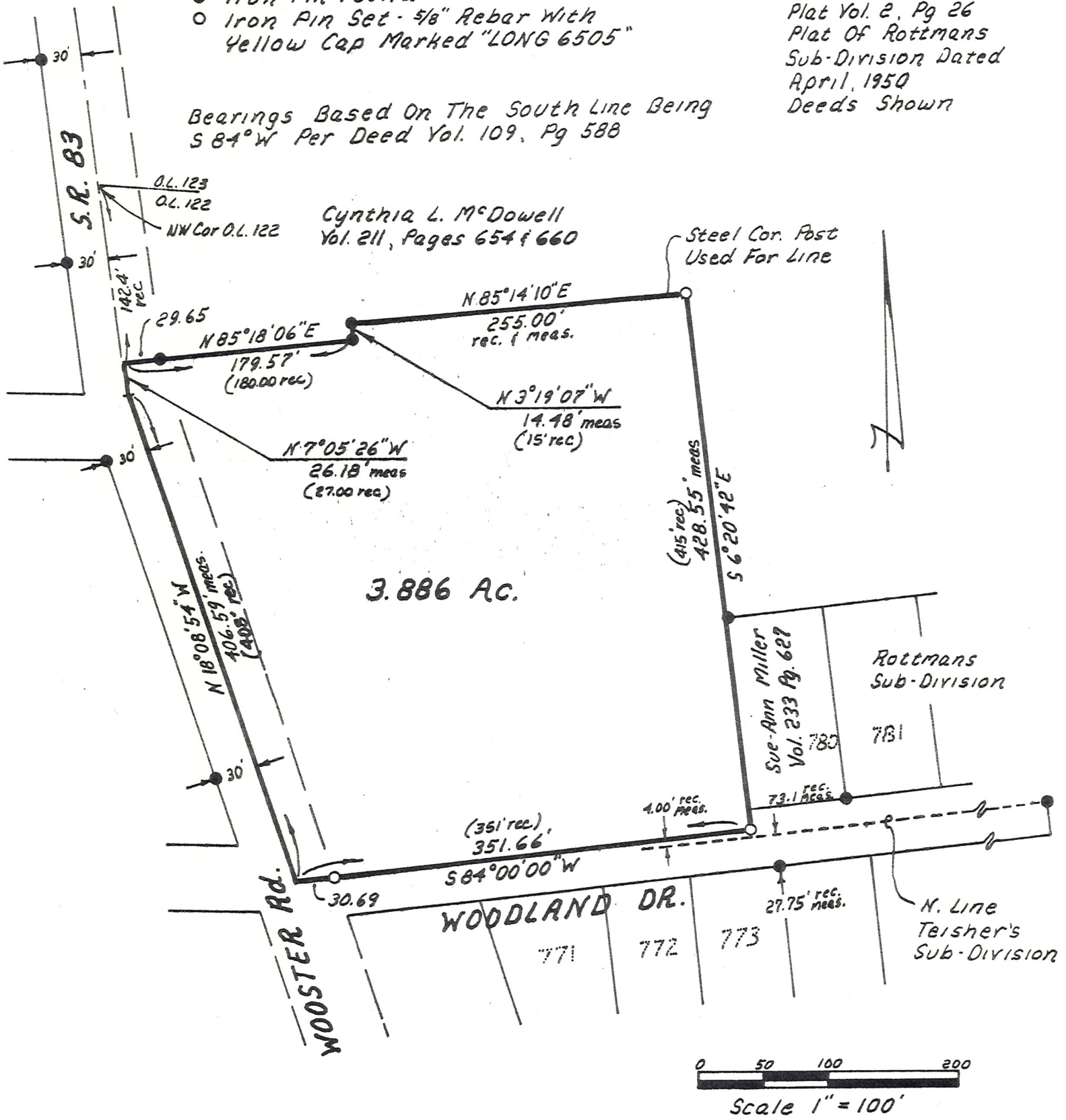
Resurvey Of Lands Currently Owned By The County Of Holmes And Occupied By The Joel Pomerene Memorial Hospital, Being The Same Land As Described In Deed Vols 109, Pg. 588, 103, Pg. 469, 103, Pg. 556 And Excepting A 4.00 Foot Strip Off The South Line By Vol. 128, Pg. 352

- Iron Pin Found
- Iron Pin Set - 5/8" Rebar With Yellow Cap Marked "LONG 6505"

References:

Plat Vol. 2, Pg 26
Plat Of Rottmans
Sub-Division Dated
April, 1950
Deeds Shown

Bearings Based On The South Line Being
S 84° W Per Deed Vol. 109, Pg 588



I Certify This Survey To Be Correct
To The Best Of My Knowledge.

William H. Long Jan 22, 1988
William H. Long P.S. 6505
Long Surveying Inc.
13301 T.R. 503
Big Prairie, Ohio, 44611

