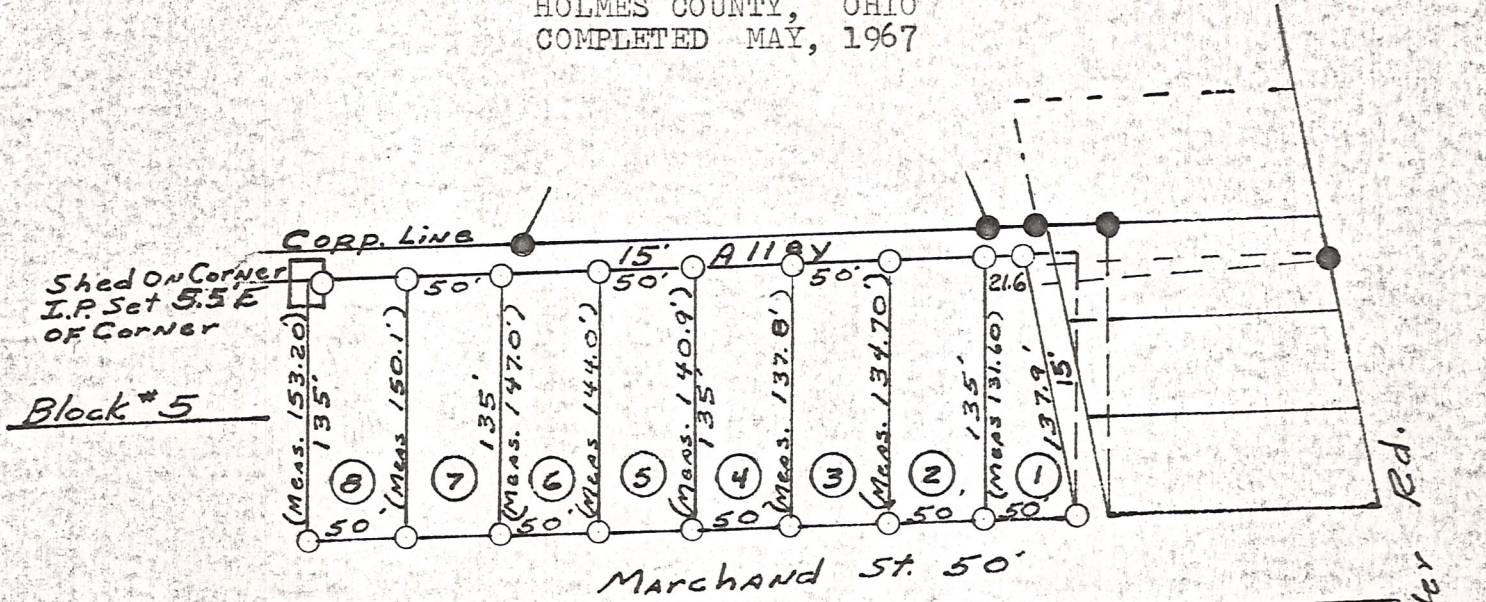


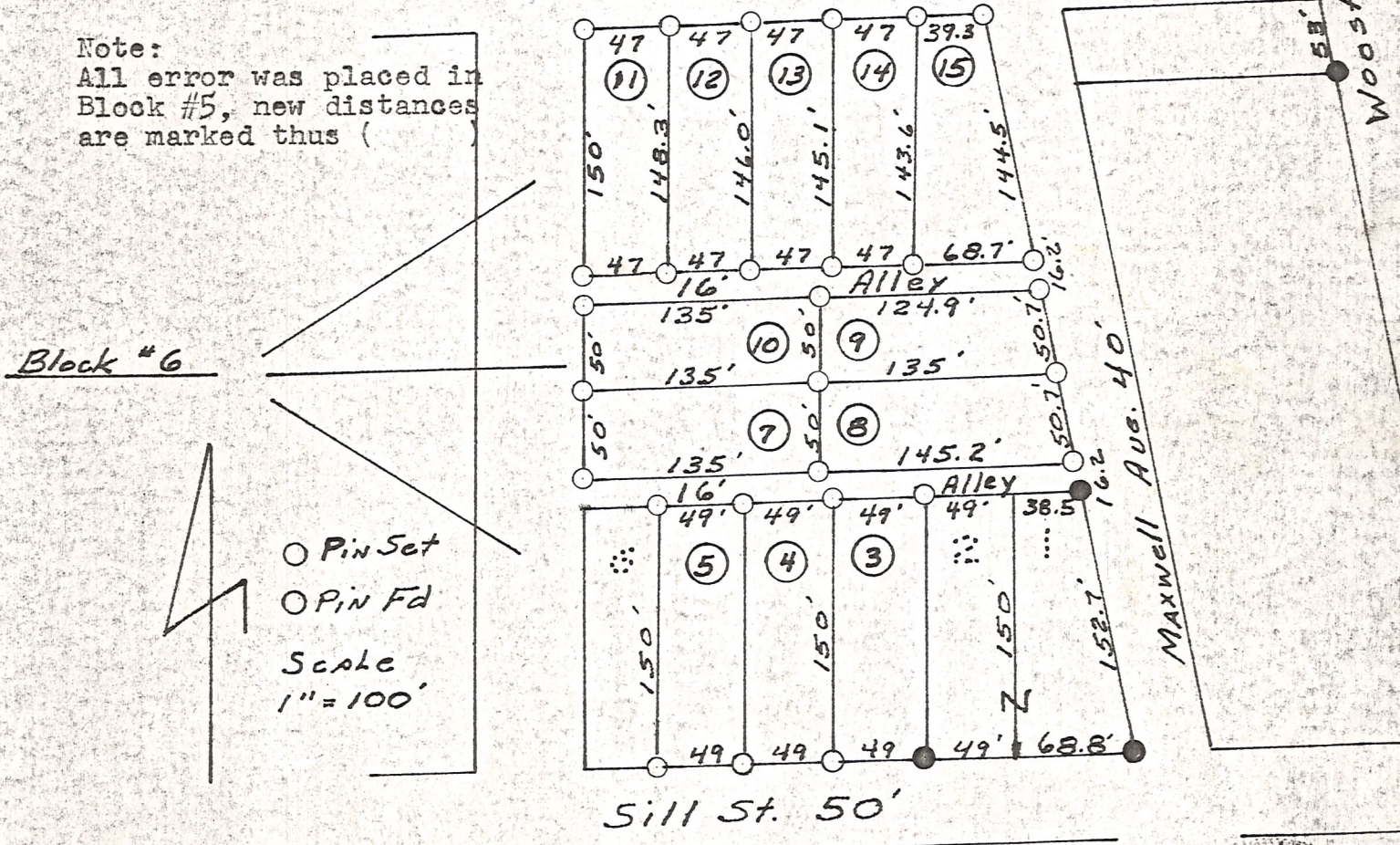
(P0046-42)

P 7

MARION ELDER SURVEY
PLEASANT VIEW
GLASS PLANT ADDITION
VILLAGE MILLERSBURG
HOLMES COUNTY, OHIO
COMPLETED MAY, 1967



Note:
All error was placed in
Block #5, new distances
are marked thus ()



○ Pin Set
○ Pin Fd
Scale
1" = 100'

I CERTIFY THIS SURVEY COMPLETED MAY 1967
TO BE CORRECT AND THAT ALL CORNERS ARE SET
AS SHOWN.

SIGNED William T. Burkley
WILLIAM T. BURKLEY
REGISTERED SURVEYOR #5107
STATE OF OHIO



MAP OFFICE COPY