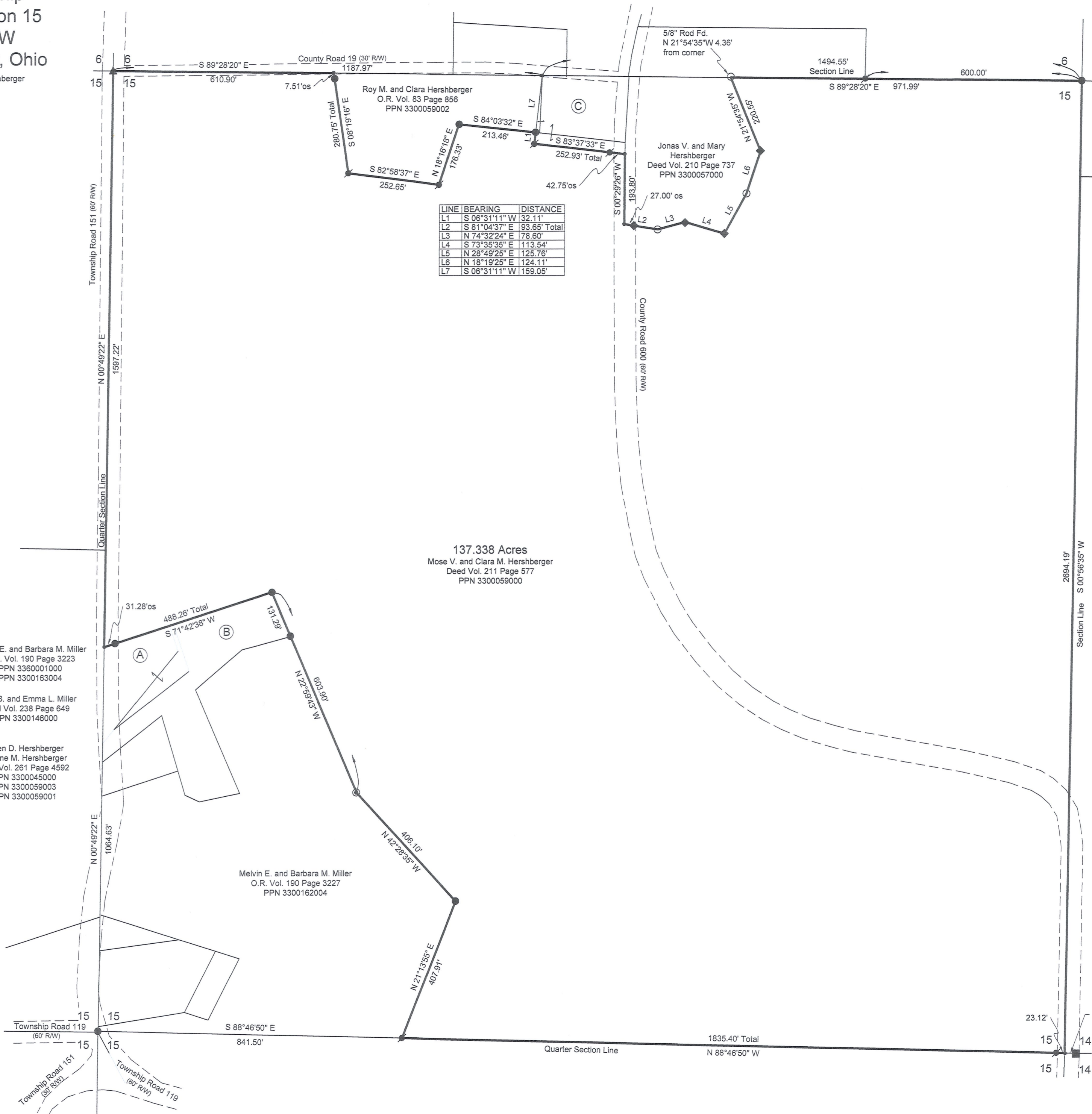
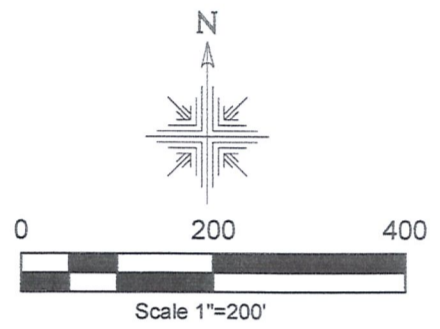


Clark Township
 N.E. Qtr. Section 15
 T-8 N; R-5 W
 Holmes County, Ohio
 SURVEYED FOR: Mose Hershberger



- Stone Found
- 5/8" Rebar Found unless noted
- ◆ 5/8" Rod Found
- ⬢ 5/8" Capped Pin Found "Baker"
- ⊙ 2" Pipe Found
- ▲ RR Spike Found
- 5/8" Capped Pin Set "Galbraith"
- Point



REFERENCES:

- Deeds as shown
- Plat Vol. 2 Page 431
- Plat Vol. 18 Page 582
- Plat Vol. 16 Page 251
- Plat Vol. 19 Page 1339
- Plat Vol. 19 Page 1948
- Plat Vol. 7 Page 4
- Plat Vol. 8 Page 665

Basis of Bearing from Ohio State Plane Coordinate System, North Zone, NAD 83.



I certify this survey to be correct to the best of my knowledge.

Caleb Jerome Galbraith P.S. 8703
 Date: January 30, 2019
 Job ID: 1119
 Pioneer Surveying & Services, LLC.
 5434 Township Road 377
 Millersburg, Ohio 44654
 Phone: 330-276-0220
 Email: caleb@pioneersurveyingandservices.com

