



SCALE: 1" = 100'

- 1 IRON PIN FOUND
- 5/8" RE BAR WITH I.D. CAP SET
- I.D. CAP MARKED "BAKER 6938"

REFERENCES:

DEED VOL. 236 PAGE 901
 " " 212 " 869
 " " 222 " 838
 " " 222 " 836
 " " 191 " 411

D.R. Vol. 47 PAGE 570

BEARINGS FROM DEED VOL. 275 PAGE 101.



I CERTIFY THIS SURVEY TO BE CORRECT TO THE BEST OF MY KNOWLEDGE.

Donald C. Baker

DONALD C. BAKER P.S. 6938
 DONALD C. BAKER SURVEYING
 138 N. CLAY ST.
 MILLERSBURG OHIO 44654
 PH. 330.674-4788

FEBRUARY 23, 2000

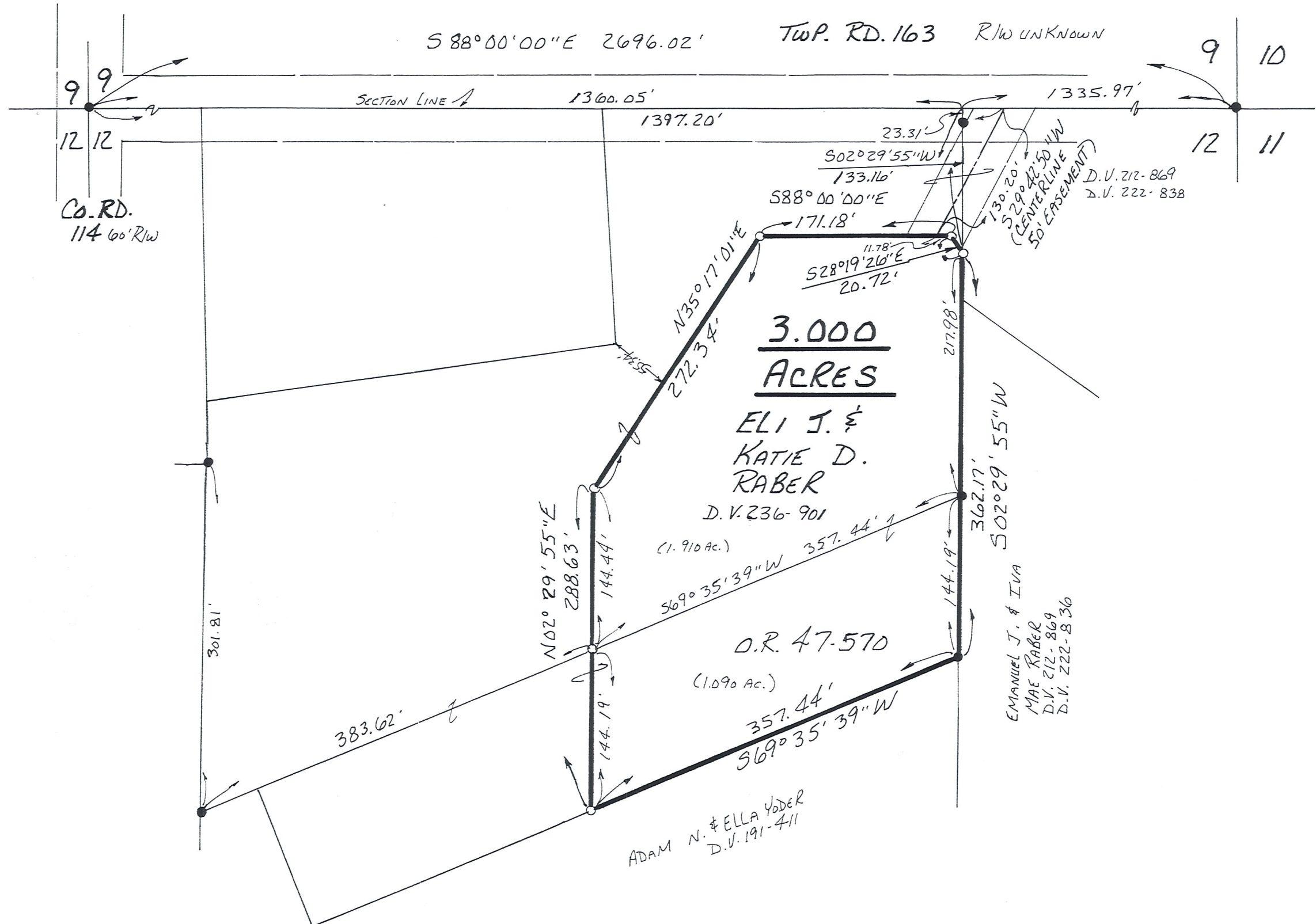
#11800 M.L. DAVIS
 F.C.C. - F.D. BAKER

CLARK TOWNSHIP
 N.E. QTR. SECTION 12
 T-8 N, R-5 W
 HOLMES COUNTY, OHIO
 (SURVEYED FOR: ELI J. & KATIE D. RABER)

RECEIVED

FEB 24 2000

Hol. Co. Tax Map Office



3.000
ACRES

ELI J. &
 KATIE D.
 RABER

D.V. 236-901

(1.910 Ac.)

O.R. 47-570

(1.090 Ac.)

ADAM N. & ELLA YODER
 D.V. 191-411

EMANUEL J. & IVA
 MAE RABER
 D.V. 212-869
 D.V. 222-836

D.V. 212-869
 D.V. 222-838