

NORTH

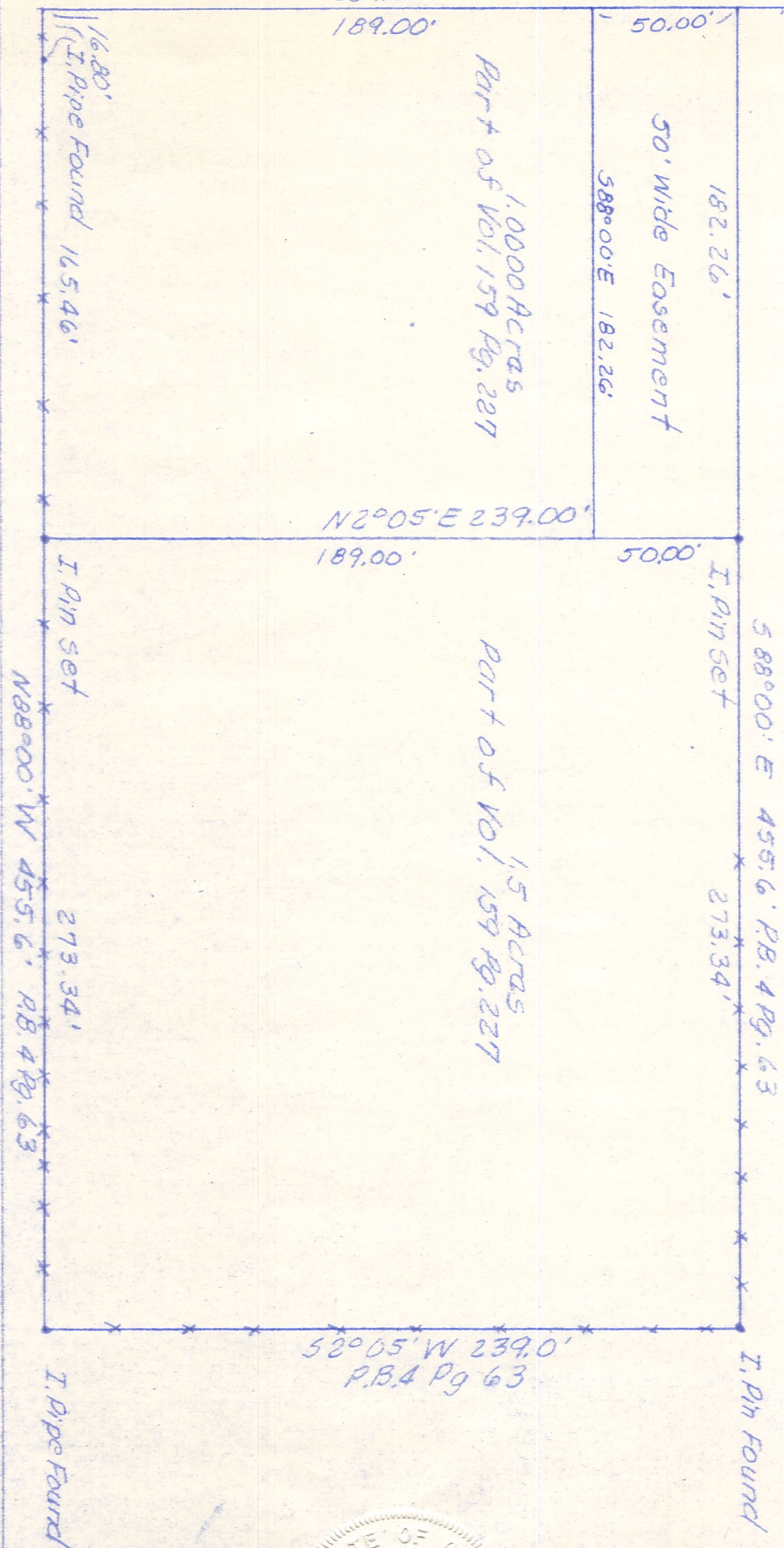
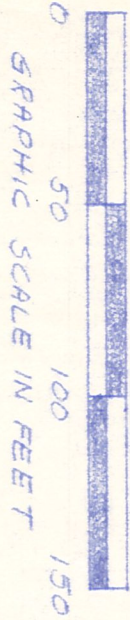
Stone P.B. 4 Pg. 126
Not Found

Approximate Centerline T.R. 163

P.B. 4 Pg. 63

Approximate centerline C.R. 114 $52^{\circ}05'W$ $239.00'$ $330'$

N.W. CORNER NE, 1/4 SEC. 12,
TWP. 8 N., RA. 5 W., OF
CLARK TWP., HOL. CO., OHIO



PLAT OF A SURVEY FOR
EMANUEL T. SCHLABACH
(GRANTOR)
KNOWN AS PART OF THE N.E. 1/4 OF
SEC. 12, TWP. 8 N., RA. 5 W., OF CLARK
TWP., HOL. CO., OHIO.



MAP OFFICE COPY