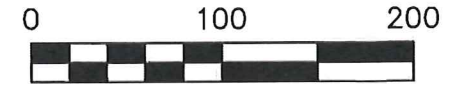
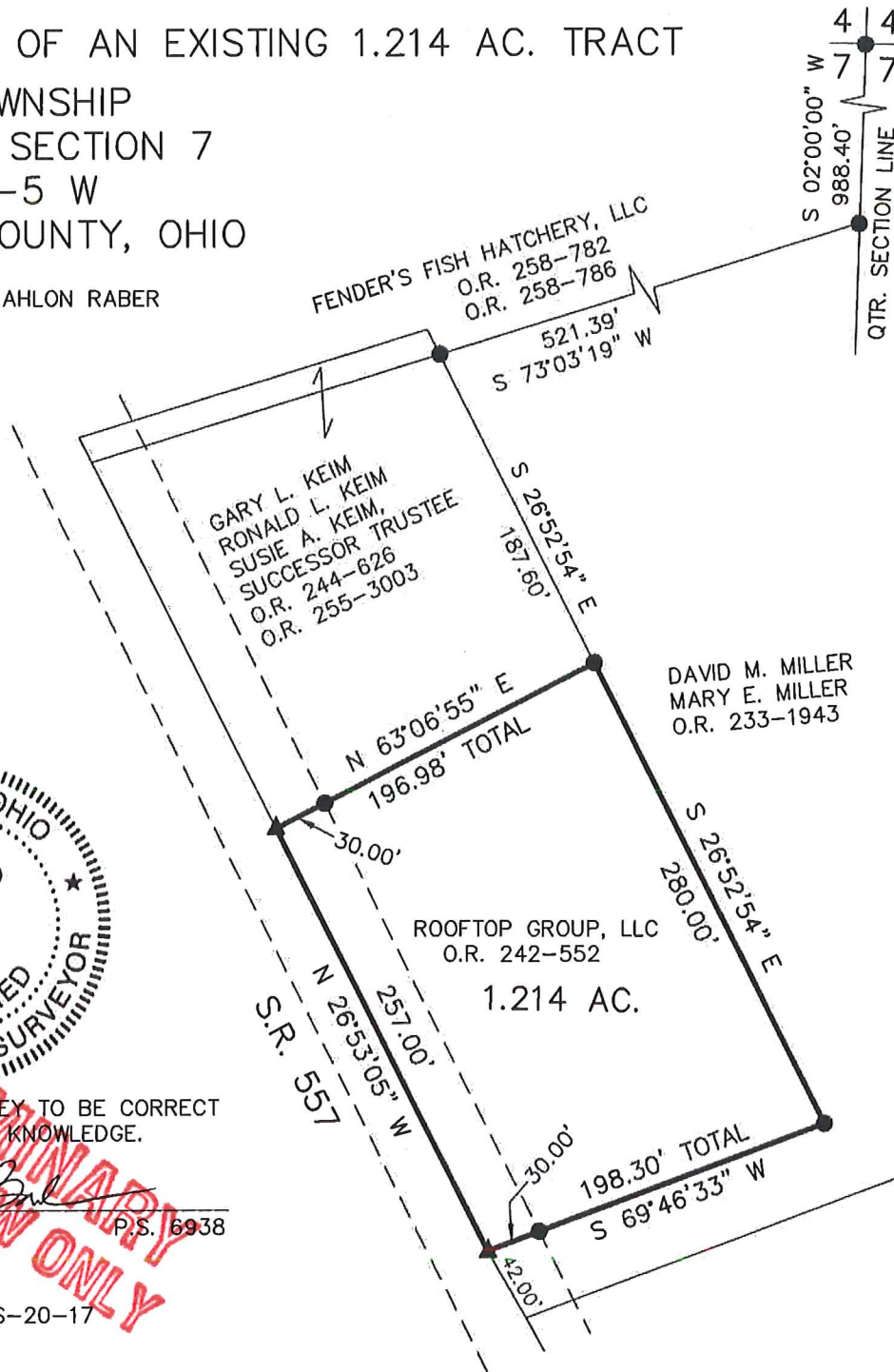


RESURVEY OF AN EXISTING 1.214 AC. TRACT
CLARK TOWNSHIP
N.W. QTR. SECTION 7
T-8 N; R-5 W
HOLMES COUNTY, OHIO

SURVEYED FOR: MAHLON RABER



SCALE: 1"=100'

- ▲ R.R. SPIKE FOUND
- 5/8" REBAR FOUND UNLESS OTHERWISE NOTED

REFERENCES

- O.R. VOL. 233 PAGE 1943
- O.R. VOL. 242 PAGE 552
- O.R. VOL. 255 PAGE 3003
- PLAT VOL. 2 PAGE 125
- PLAT VOL. 12 PAGE 966
- PLAT VOL. 13 PAGE 109
- PLAT VOL. 19 PAGE 3082
- PLAT VOL. 17 PAGE 178
- BEARINGS FROM PLAT VOL. 13 PAGE 109



I CERTIFY THIS SURVEY TO BE CORRECT TO THE BEST OF MY KNOWLEDGE.

Donald C. Baker

DONALD C. BAKER P.S. 6938

DATE: JAN. 11, 2017

FDB\KES

FILE NAME: WORK4\S-20-17

FOR REVIEW ONLY



BAKER SURVEYING, LLC
138 N. CLAY STREET
MILLERSBURG, OHIO 44654
PH. 330-674-4788
FAX 330-674-6027