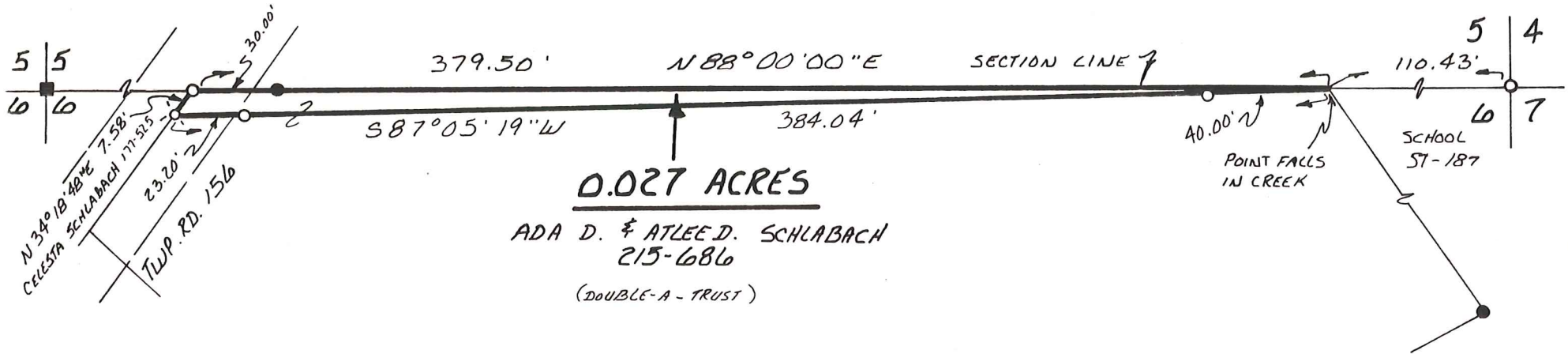
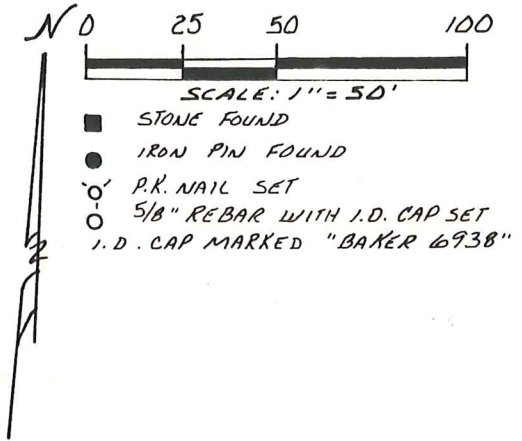


CLARK TOWNSHIP  
 N.E. QTR. SECTION 6  
 T. 8N ; R. 5W  
 HOLMES COUNTY, OHIO

REFERENCES:  
 DEED VOL. 215 PAGE 686  
 BEARINGS FROM PLAT. VOL. 8 PAGE 838



0.027 ACRES  
 ADA D. & ATLEE D. SCHLABACH  
 215-686  
 (DOUBLE-A - TRUST)

I CERTIFY THIS SURVEY TO BE CORRECT  
 TO THE BEST OF MY KNOWLEDGE.

Donald C. Baker  
 DONALD C. BAKER P.S. 6938  
 4321 T.R. 252  
 GLENMONT, OHIO



JANUARY 29, 1991  
 1513D-MLS  
 1524