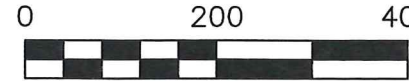


CLARK TOWNSHIP
 S.W. QTR. SECTION 4
 N.E. & S.E. QTRS. SECTION 5
 T-8 N; R-5 W
 HOLMES COUNTY, OHIO

SURVEYED FOR: KARE HOLDINGS, LLC

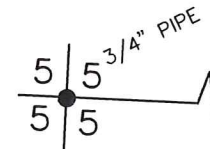
0 200 400



SCALE: 1"=200'

- 5/8" REBAR FOUND
UNLESS OTHERWISE NOTED
- ⊙ MAG NAIL SET
- 5/8" REBAR SET WITH I.D. CAP
I.D. CAP MARKED "BAKER 6938"

JAN 27 '16 AM 10:21



REFERENCES

- O.R. VOL. 251 PAGE 1112
- O.R. VOL. 22 PAGE 866
- O.R. VOL. 31 PAGE 587
- O.R. VOL. 179 PAGE 2822
- PLAT VOL. 19 PAGE 2619
- PLAT VOL. 11 PAGE 34
- PLAT VOL. 17 PAGE 105
- BEARINGS FROM PLAT VOL. 19 PAGE 2619

WAYNE A. SCHROCK
 BETTY SCHROCK
 O.R. 179-2822

12.166 ACRES

S.W. QTR. SEC. 4-1.645 AC.
 S.E. QTR. SEC. 5-9.667 AC.
 N.E. QTR. SEC. 5-0.854 AC.

BE 4 KL, LTD.
 O.R. 251-1112

BE 4 KL, LTD.
 O.R. 31-587

BE 4 KL, LTD.
 O.R. 22-866

MATTIE YODER
 MATTIE V. YODER
 D.V. 187-622
 D.V. 228-978
 D.V. 278-626
 O.R. 252-2826

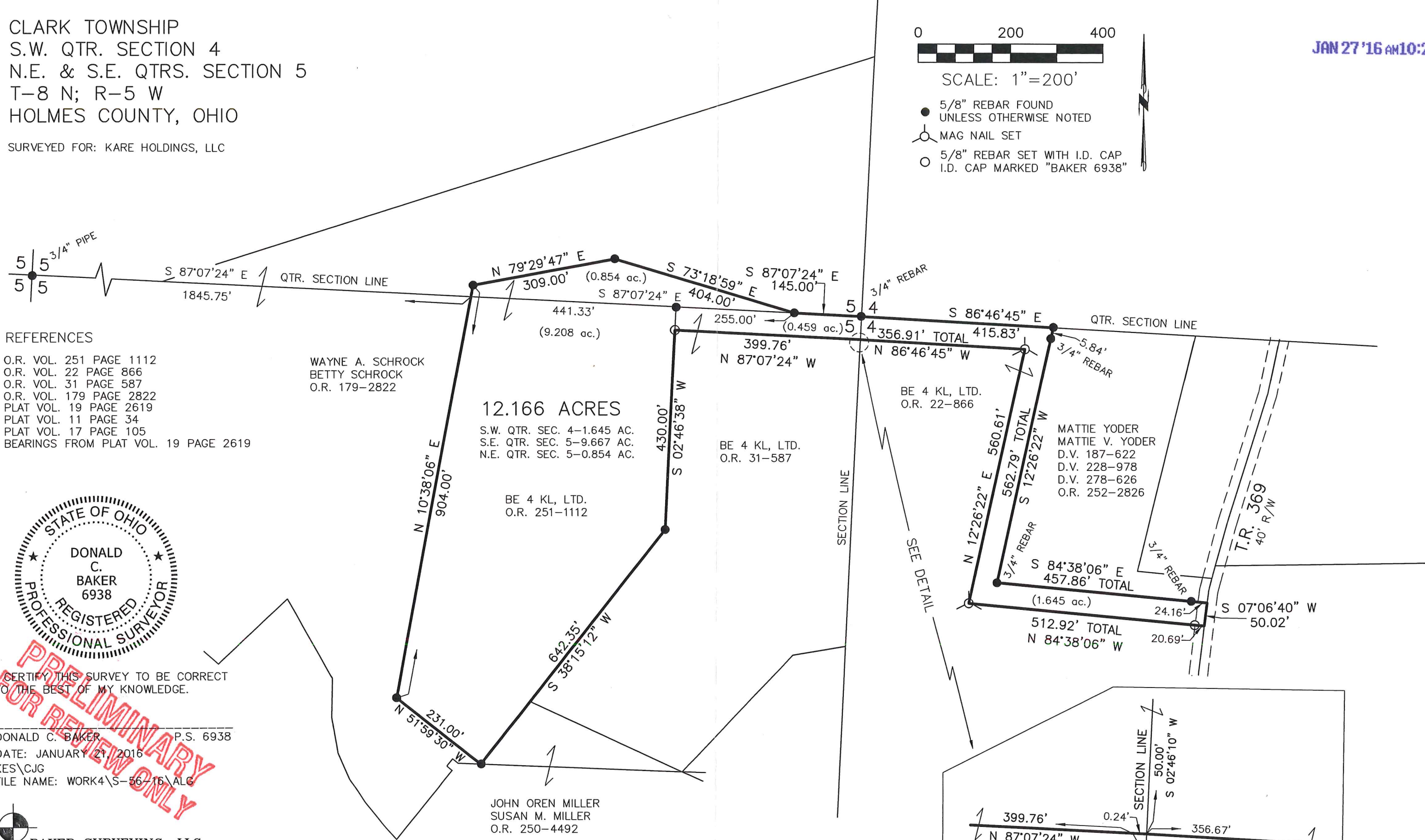


I CERTIFY THIS SURVEY TO BE CORRECT
 TO THE BEST OF MY KNOWLEDGE.

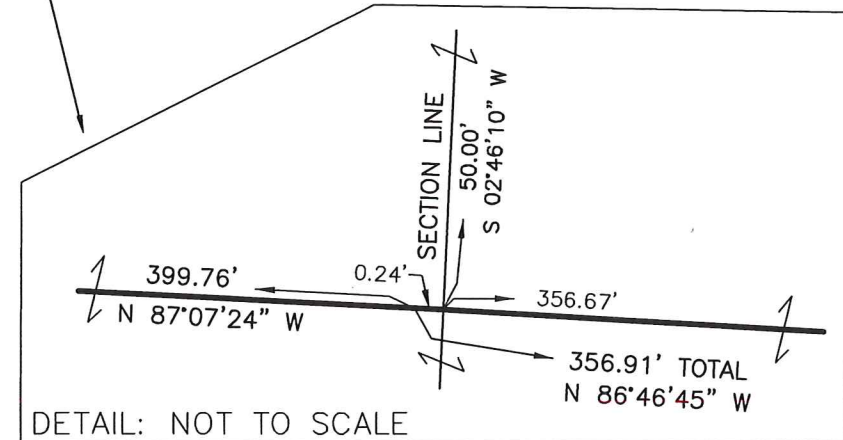
DONALD C. BAKER P.S. 6938
 DATE: JANUARY 21, 2016
 KES\CJG
 FILE NAME: WORK4\S-56-16\ALG



BAKER SURVEYING, LLC
 138 N. CLAY STREET
 MILLERSBURG, OHIO 44654
 PH. 330-674-4788
 FAX 330-674-6027



SEE DETAIL



DETAIL: NOT TO SCALE