

SCALE: 1"=60'

- 5/8" REBAR FOUND UNLESS OTHERWISE NOTED
- DRILL HOLE SET IN CONC.
- 5/8" REBAR SET WITH I.D. CAP I.D. CAP MARKED "BAKER 6938"

REFERENCES

- O.R. VOL. 194 PAGE 2983
- O.R. VOL. 247 PAGE 117
- O.R. VOL. 266 PAGE 1817
- PLAT VOL. 4 PAGE 98
- PLAT VOL. 7 PAGE 684
- PLAT VOL. 19 PAGE 1877
- PLAT VOL. 7 PAGE 634
- PLAT VOL. 2 PAGE 365
- BEARINGS FROM PLAT VOL. 19 PAGE 1877



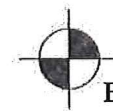
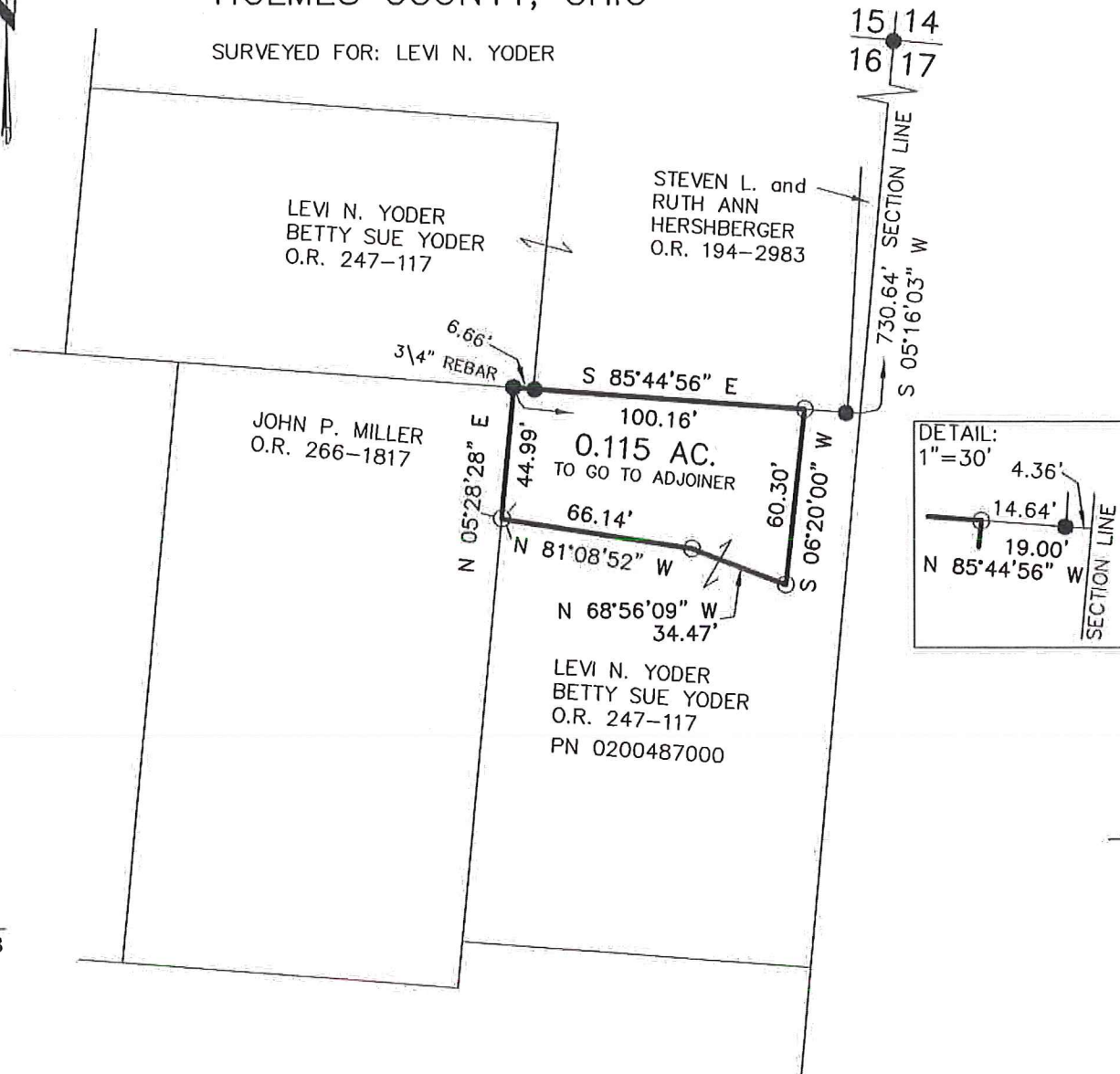
I CERTIFY THIS SURVEY TO BE CORRECT TO THE BEST OF MY KNOWLEDGE.

Donald C. Baker

DONALD C. BAKER P.S. 6938
 DATE: MARCH 11, 2019
 KES\SBC
 FILE NAME: WORK4\S-97-19

CLARK TOWNSHIP
 N.E. QTR. SECTION 16
 T-8 N; R-4 W
 HOLMES COUNTY, OHIO

SURVEYED FOR: LEVI N. YODER



BAKER SURVEYING, LLC
 138 N. CLAY STREET
 MILLERSBURG, OHIO 44654
 PH. 330-674-4788
 FAX 330-674-6027