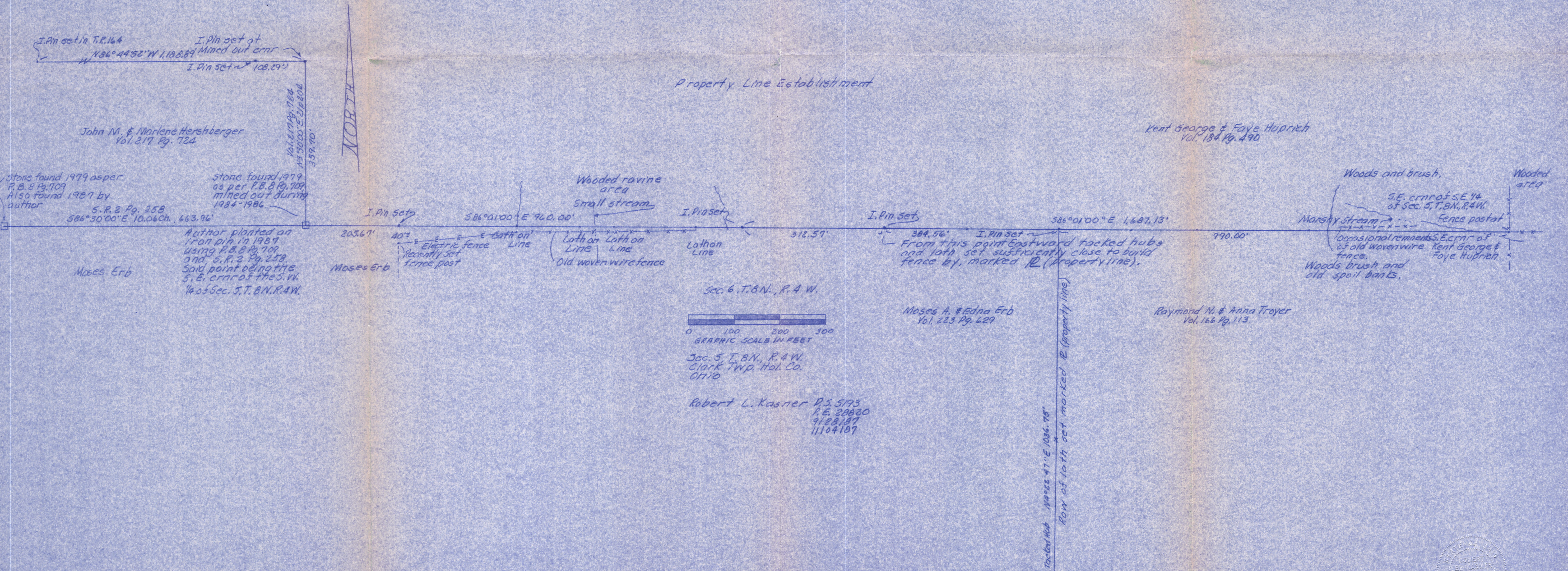


Property Line Establishment



I. Pin set in T.R. 164
 N 96° 44' 52" W 1,188.89'
 I. Pin set at Mined out crnr
 I. Pin set ~ 108.29'

John M. & Marlene Herstberger
 Vol. 217 Pg. 724

Kent George & Faye Huprich
 Vol. 184 Pg. 490

stone found 1979 as per
 P.B. 8 Pg. 709
 Also found 1987 by
 author
 S.R. 2 Pg. 258
 586° 30' 00" E 10.06 ch. 663.96'

stone found 1979
 as per P.B. 8 Pg. 709
 mined out during
 1984-1986

Author planted an
 iron pin in 1989
 using P.B. 8 Pg. 709
 and S.R. 2 Pg. 258
 said point being the
 S.E. crnr of the S.W.
 1/4 of Sec. 5, T. 8 N., R. 4 W.

I. Pin set
 205.67'
 40°
 Electric fence
 Recently set
 fence post
 Moses Erb

586° 01' 00" E 960.00'

Wooded ravine
 area
 Small stream
 Lath on Lath on
 Line
 Lath on
 Line
 Old woven wire fence

I. Pin set
 Lath on
 Line

312.51'

I. Pin set

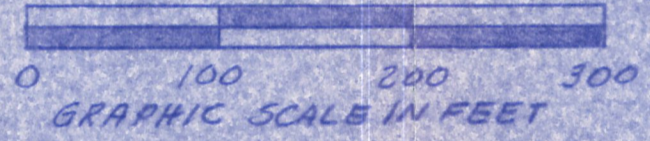
384.56' I. Pin set
 From this point eastward tacked hubs
 and lath set sufficiently close to build
 fence by, marked R (property line).

586° 01' 00" E 1,687.13'

990.00'

Woods and brush,
 Marshy stream
 S.E. crnr of S.E. 1/4
 of Sec. 5, T. 8 N., R. 4 W.
 Fence post
 Occasional remnants
 of old woven wire
 fence.
 Woods brush and
 old spoil banks,
 Kent George &
 Faye Huprich

Sec. 6, T. 8 N., R. 4 W.



Sec. 5, T. 8 N., R. 4 W.
 Clark Twp. Hol. Co.
 Ohio

Moses A. & Edna Erb
 Vol. 223 Pg. 629

Raymond W. & Anna Troyer
 Vol. 166 Pg. 113

Robert L. Kasner P.S. 5193
 P.E. 20030
 9/28/87
 11104187

Tacked Hub 110° 22' 47" E 106.75'
 Row of lath set marked R (property line)

