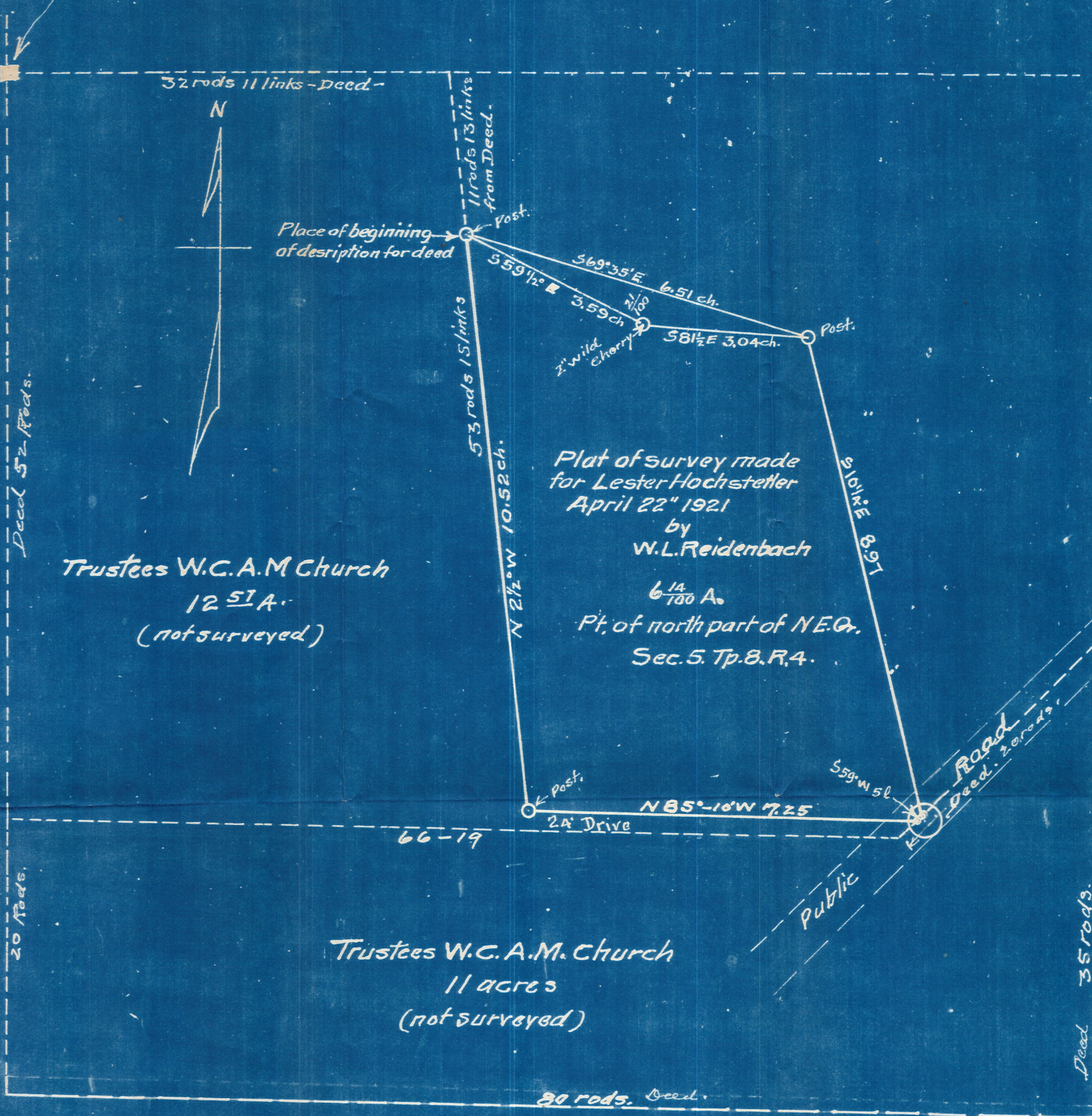


N.W. Corner  
N.E. Gr. Sec. 5. Tp. 8. R. 4



Place of beginning of description for deed

Plat of survey made  
for Lester Hochstetter  
April 22 1921  
by  
W.L. Reidenbach

6 <sup>14</sup>/<sub>100</sub> A.  
Pt. of north part of N.E. Gr.  
Sec. 5. Tp. 8. R. 4.

Trustees W.C.A.M. Church  
12 <sup>51</sup>/<sub>100</sub> A.  
(not surveyed)

Trustees W.C.A.M. Church  
11 acres  
(not surveyed)

Public Road  
Deed. 20 rods.

24' Drive

