

0 100 200



SCALE: 1"=100'

- 5/8" REBAR FOUND UNLESS OTHERWISE NOTED
- 5/8" REBAR SET WITH I.D. CAP I.D. CAP MARKED "BAKER 6938"

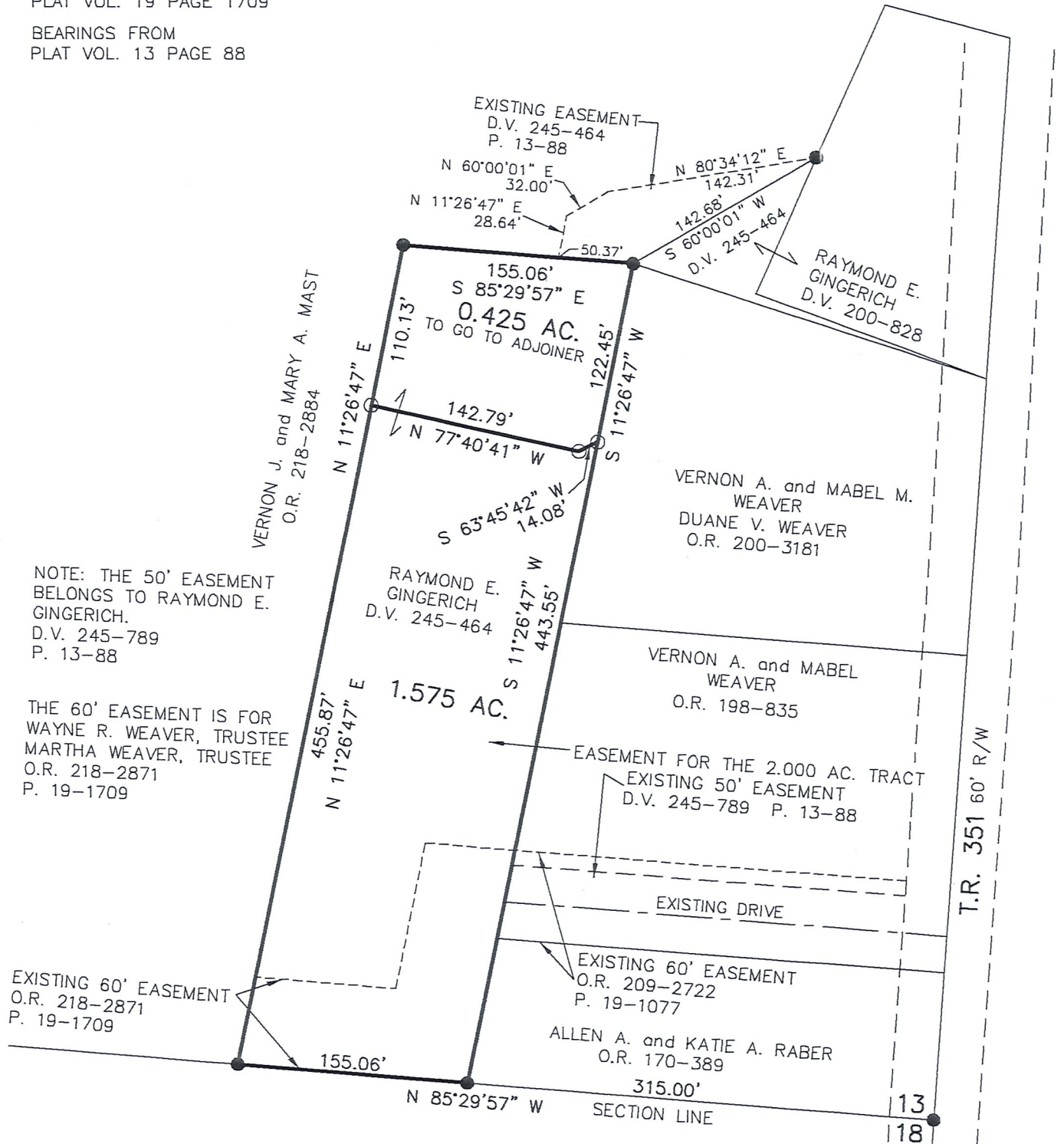
REFERENCES

DEED VOL. 245 PAGE 464
 O.R. VOL. 198 PAGE 835
 O.R. VOL. 200 PAGE 3181
 PLAT VOL. 13 PAGE 88
 PLAT VOL. 18 PAGE 320
 PLAT VOL. 19 PAGE 1709

BEARINGS FROM
 PLAT VOL. 13 PAGE 88

BERLIN TOWNSHIP
 S.W. QTR. SECTION 13
 T-9 N; R-6 W
 HOLMES COUNTY, OHIO

SURVEYED FOR: RAY GINGERICH



NOTE: THE 50' EASEMENT BELONGS TO RAYMOND E. GINGERICH. D.V. 245-789 P. 13-88

THE 60' EASEMENT IS FOR WAYNE R. WEAVER, TRUSTEE MARTHA WEAVER, TRUSTEE O.R. 218-2871 P. 19-1709

EXISTING 60' EASEMENT O.R. 218-2871 P. 19-1709

I CERTIFY THIS SURVEY TO BE CORRECT TO THE BEST OF MY KNOWLEDGE.

Donald C. Baker
 DONALD C. BAKER P.S. 6938
 DATE: APRIL 22, 2014
 KES
 FILE NAME: WORK4\S-90-14



DONALD C. BAKER SURVEYING
 138 N. CLAY STREET
 MILLERSBURG, OHIO 44654
 PH. 330-674-4788
 FAX 330-674-6027

PRELIMINARY FOR REVIEW ONLY