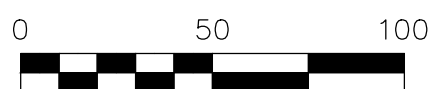


T.R. 354 RELOCATION SURVEY VACATED RIGHT-OF-WAY

BERLIN TOWNSHIP
4TH QTR., LOT 8
T-9 N; R-6 W
HOLMES COUNTY, OHIO

SURVEYED FOR: HOLMES COUNTY ENGINEER



SCALE: 1"=50'

● 5/8" REBAR FOUND
UNLESS OTHERWISE NOTED

REFERENCES

O.R. VOL. 213 PAGE 3439

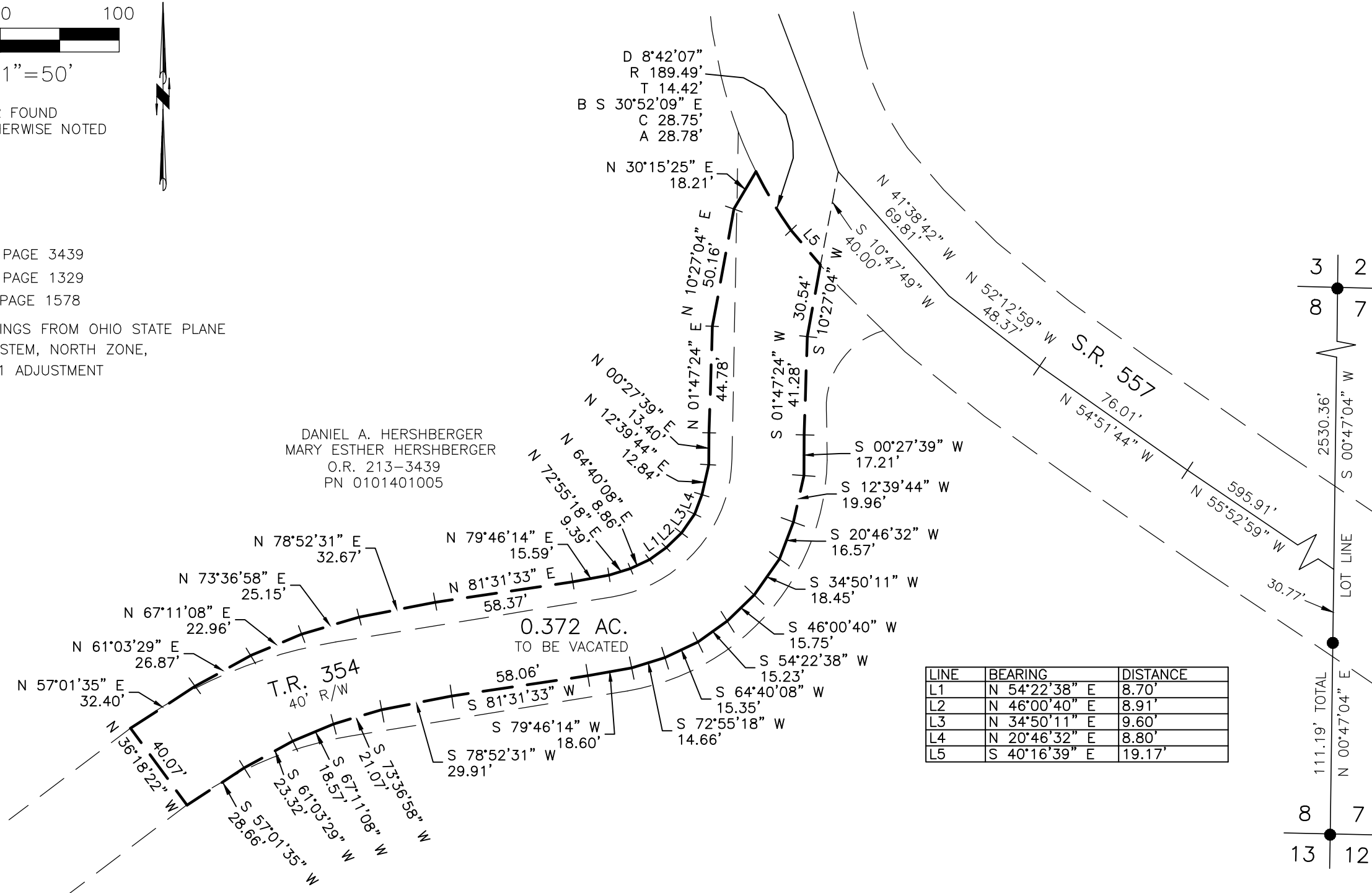
O.R. VOL. 237 PAGE 1329

PLAT VOL. 19 PAGE 1578

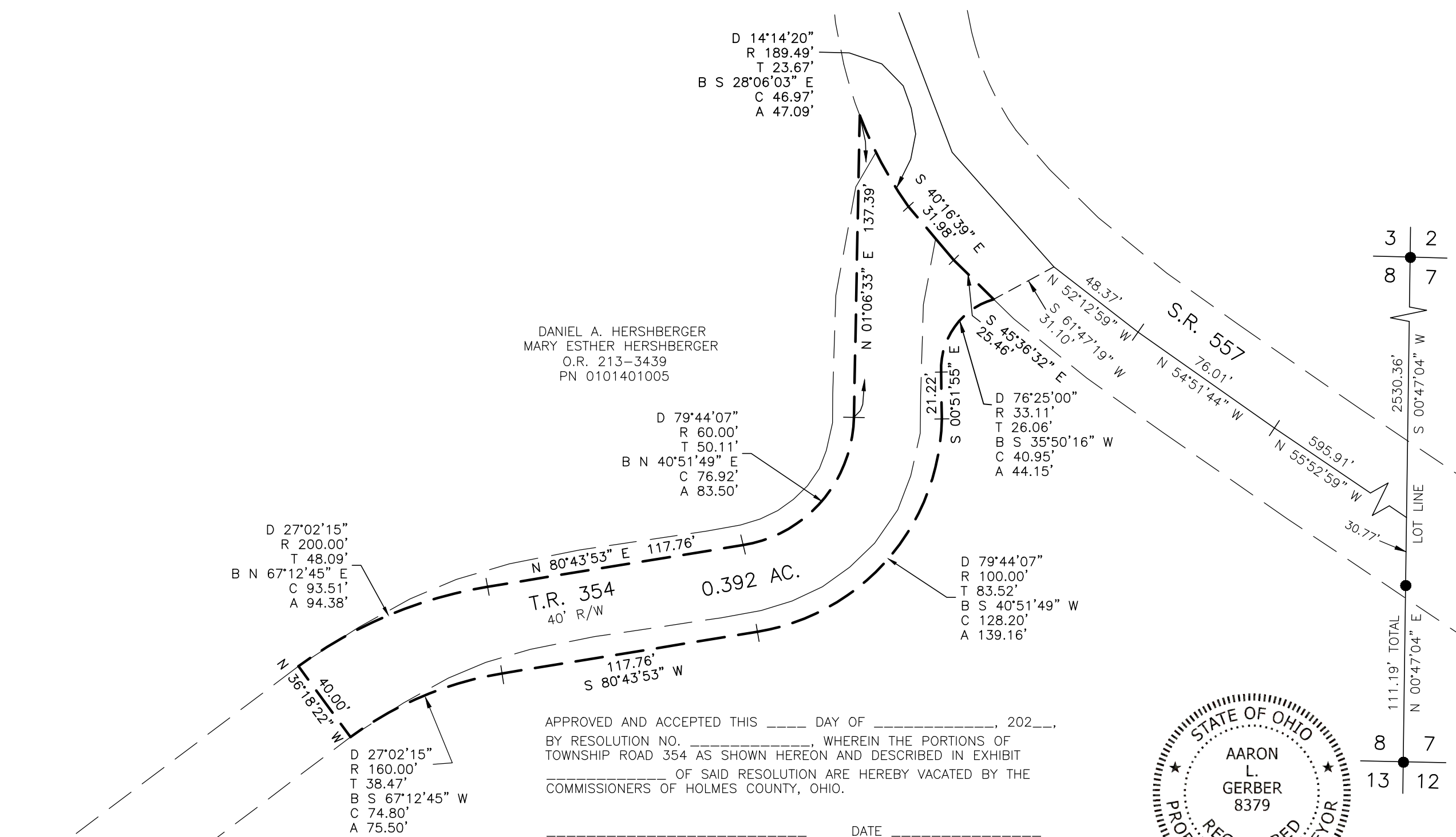
BASIS OF BEARINGS FROM OHIO STATE PLANE

COORDINATE SYSTEM, NORTH ZONE,

N.A.D. 83, 2011 ADJUSTMENT



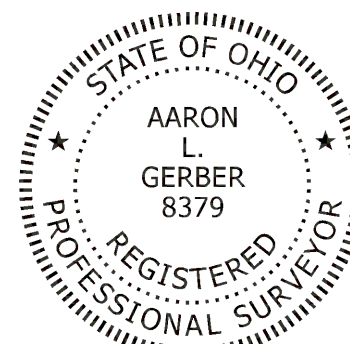
T.R. 354 RELOCATION SURVEY RELOCATED RIGHT-OF-WAY



APPROVED AND ACCEPTED THIS ____ DAY OF _____, 202____,
BY RESOLUTION NO. _____, WHEREIN THE PORTIONS OF
TOWNSHIP ROAD 354 AS SHOWN HEREON AND DESCRIBED IN EXHIBIT
_____ OF SAID RESOLUTION ARE HEREBY VACATED BY THE
COMMISSIONERS OF HOLMES COUNTY, OHIO.

APPROVED AND ACCEPTED THIS ____ DAY OF _____, 202____,
BY RESOLUTION NO. _____, WHEREIN PORTIONS OF
TOWNSHIP ROAD 354 AS SHOWN HEREON AND DESCRIBED IN EXHIBIT
_____ OF SAID RESOLUTION ARE HEREBY RELOCATED AND
DEDICATED FOR PUBLIC USE AS A PERPETUAL EASEMENT FOR HIGHWAY
PURPOSES BY THE COMMISSIONERS OF HOLMES COUNTY, OHIO.

APPROVED AND ACCEPTED THIS ____ DAY OF _____, 202____,
BY RESOLUTION NO. _____, WHEREIN PORTIONS OF
TOWNSHIP ROAD 354 AS SHOWN HEREON AND DESCRIBED IN EXHIBIT
_____ OF SAID RESOLUTION ARE HEREBY RELOCATED AND
DEDICATED FOR PUBLIC USE AS A PERPETUAL EASEMENT FOR HIGHWAY
PURPOSES BY THE COMMISSIONERS OF HOLMES COUNTY, OHIO.



I CERTIFY THIS SURVEY TO BE CORRECT
TO THE BEST OF MY KNOWLEDGE.

A.L.G.
AARON L. GERBER

DATE: NOV. 7, 2024
ALG

FILE NAME: WORK7\S-539-24\CNK

BAKER SURVEYING, LLC
138 N. CLAY STREET
MILLERSBURG, OHIO 44654
PH. 330-674-4788
EMAIL: bakersurveying@gmail.com