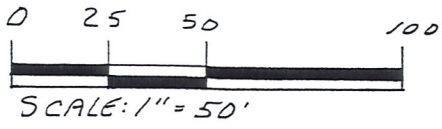


BERLIN TOWNSHIP
 1ST. QTR. LOT 21
 T-9N; R-6W
 HOLMES COUNTY, OHIO
 (SURVEYED FOR: ROBER STEINER)

SURVEY OF A 20' EASEMENT



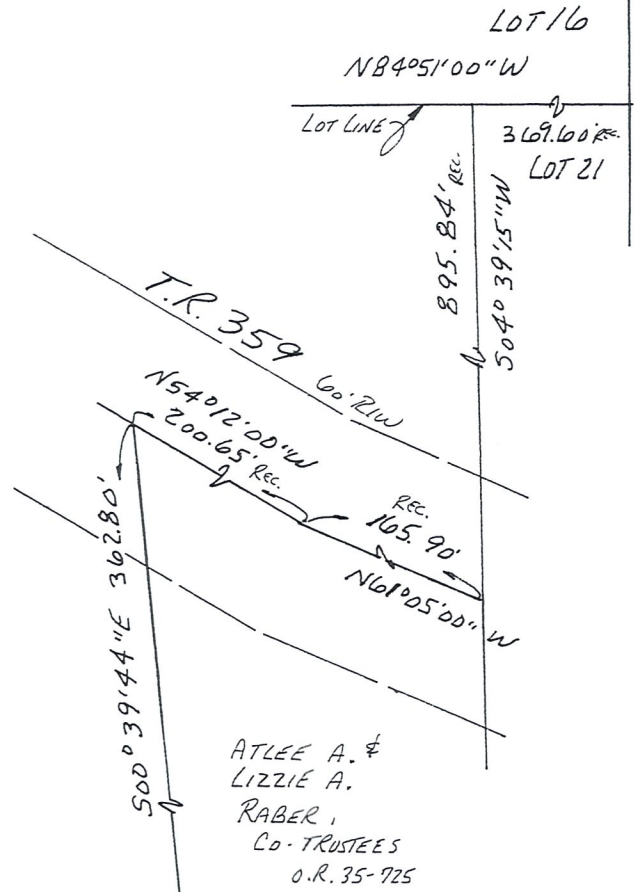
REFERENCES:

DEED VOL. 258 PAGE 579
 " " 244 " 369

O.R. VOL. 1 PAGE 978
 " " 35 " 725

PLAT VOL. 2 PAGE 134
 PLAT VOL. 12 PAGE 61

BEARINGS FROM PLAT VOL 8 PAGE 592



ATLEE A. &
 LIZZIE A.
 RABER,
 CO-TRUSTEES
 O.R. 35-725

DEROB, LTD.
 O.R. 1-978

N84°47'05"W 310.25'

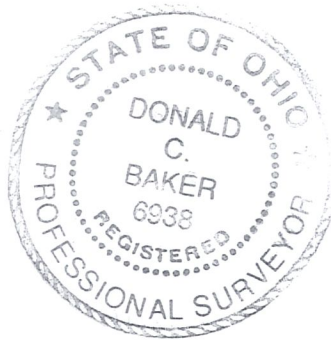
LAURA S.
 MILLER
 D.V. 253-137
 D.V. 258-579

LEVER DEROB, INC.
 D.V. 244-369

S23°02'31.49"E 369.59'
 CENTERLINE
 EASEMENT

U.S. 62 & S.R. 39
 R/W VARIES

N23°02'31.49"W 10.02'
 S62°48'15"W 10.02'



I CERTIFY THIS PLAT TO BE CORRECT
 TO THE BEST OF MY KNOWLEDGE.

Donald C. Baker
 DONALD C. BAKER P.S. 6938
 DONALD C. BAKER SURVEYING
 138 N. CLAY ST.
 MILLERSBURG, OH 44654
 APRIL 23, 2001 PH. 330-674-4788