

SURVEY OF A 16' EASEMENT

BERLIN TOWNSHIP
 1ST. QTR. LOT 21
 T-4N; R-6W
 HOLMES COUNTY, OHIO

SECOND STUTZMAN SUBDIVISION
 (LOT 14) PLAT VOL. 6-174 & 175

(SURVEYED FOR: SHANNON HERSHBERGER)

0 15 30 60



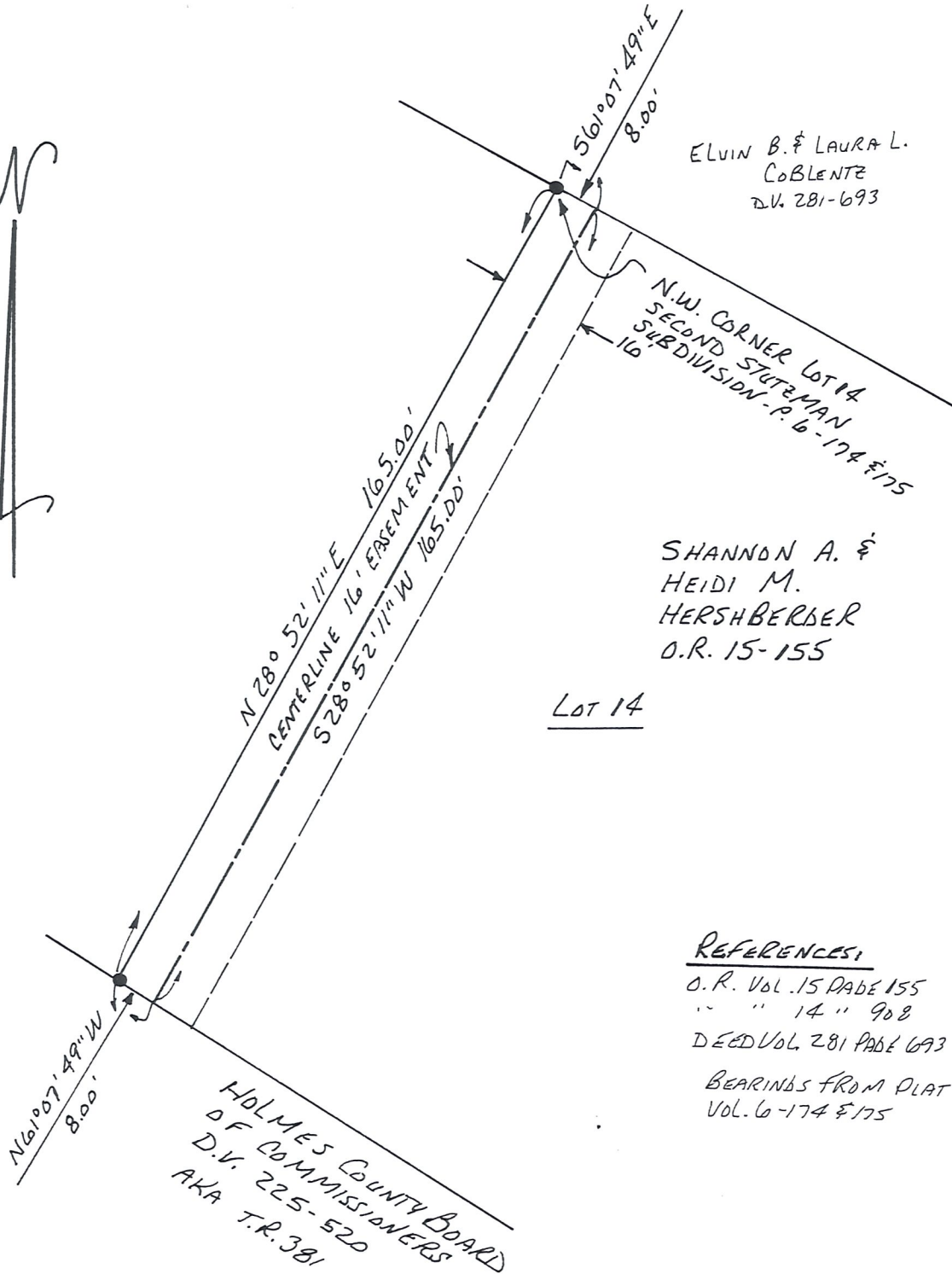
SCALE: 1" = 30'

● IRON PIN FOUND



I CERTIFY THIS SURVEY TO BE CORRECT
 TO THE BEST OF MY KNOWLEDGE.

Donald C. Baker
 DONALD C. BAKER P.S. 6938
 138 N. CLAY ST.
 MILLERSBURG, OHIO 44654
 PH. (330) 674-4788
 DECEMBER 3, 1998
 # 88898 - M.L. DAVIS
 F.C.C. - D.C. BAKER



ELVIN B. & LAURA L.
 COBLENTZ
 D.V. 281-693

N.W. CORNER LOT 14
 SECOND STUTZMAN
 SUBDIVISION - P. 6-174 & 175

SHANNON A. &
 HEIDI M.
 HERSHBERGER
 O.R. 15-155

LOT 14

REFERENCES:
 O.R. VOL. 15 PAGE 155
 " " 14 " 908
 DEED VOL. 281 PAGE 693
 BEARINGS FROM PLAT
 VOL. 6-174 & 175

HOLMES COUNTY BOARD
 OF COMMISSIONERS
 D.V. 225-520
 AKA T.R. 381