

P.B. 8 Pg. 105 refers to point "A" as being S 86° 59' 20" E 152.49',
 N 1° 48' 53" E 288.30', and S 86° 50' 56" E 49.83' from the
 N.E. cor. of Lot 2 in First Stutman Subdivision as per
 Point "A" P.B. 2A Pg. 167 Hol. Co. Records.

579° 34' 16" E 61.31' = 53.60' + 7.71'

567° 05' 12" E
66.53

(Approximat center line
T.R. 359

550° 49' 05" E
146.84'

0.285 acres
part of Vol. 241 Pg. 795

Leroy Mullet
Lawrance Schrafrath
Vol. 241 Pg. 795
P.B. 8 Pg. 105

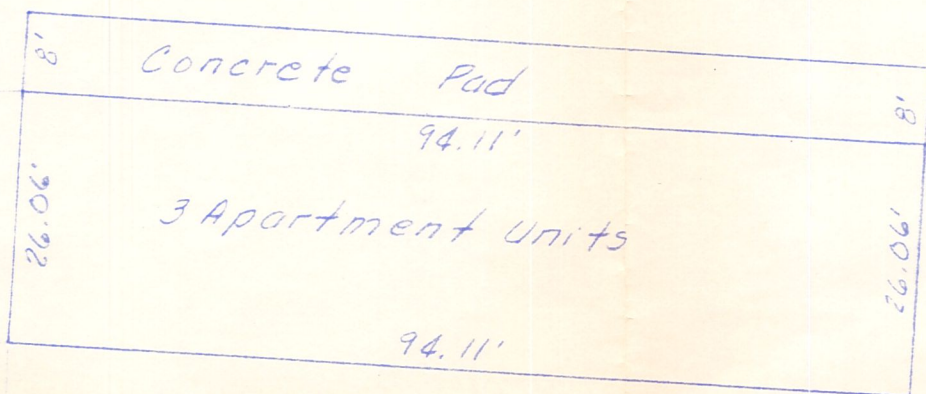
1.058 acres
285
0.773 acres remaining

I. Pin Sat

51° 48' 53" W 231.48'

I. Pin Fd.

Richard A. Beechy
Vol. 235 Pg. 485
P.B. 10 Pg. 751



311° 48' 11" W

97.25'

Reset I. Pin

585° 11' 17" E 217.53' = 53.07' + 164.46'
160.10'

Richard D. & Julianna Weaver
Vol. 240 Pg. 872
P.B. 8 Pg. 105

I. Pin Sat

95.07'

I. Pin Fd.

N 1° 48' 53" E

141.66'

42.74'

Reset I. Pin
53.07'

53.00'

68.70'

53.00'

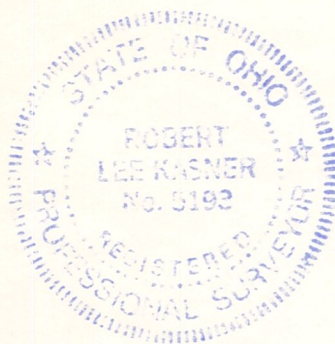
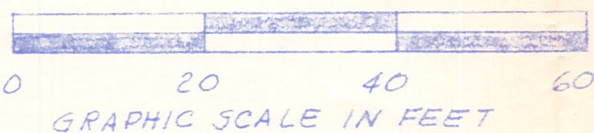
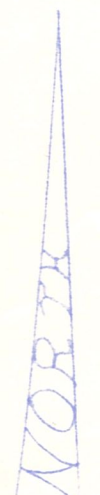
17.27'

144.44'

15.34'

46.25'

44.20'



BUILDING LOCATION PLAT
Known as part of Lot 21, 1st Qtr.,
T. 9 N., R. 6 W., of Berlin Twp., Hol. Co.,
Ohio.

Robert L. Kasner P.S. 5193
P.E. 28820
12/17/88