

1.500 Acre Tract
P. B. 8 Pg. 867
N84°51'W

Known as an easement for purposes
of ingress and egress from T.R. 359
I.P. P.B. 7 Pg. 787 to a 1.50 acre tract in Lot 16, 1st
Qtr., Twp. 9 N., Ra. 6 W., of Berlin Twp.,
Hol. Co., Ohio, and being located in
Lots 16 and 21, 1st Qtr., and being
parts of a 1.5411 acre tract (Vol. 224
Pg. 473), a 3.4989 acre tract (Vol. 191
Pg. 695), and a 3.95 acre tract (Vol.
225 Pg. 330), and described as follows.

Beginning at a stone monument
at the N.E. crnr of Lot 21; thence
with the North Line thereof North
84°51'00" West 138.60' to an iron
pin at the true point of beginning;
thence leaving said lot line South
4°19'30" West 984.98' to a point in
T.R. 359;

thence with T.R. 359 North 64°17'00"
West 50.00' to a point;

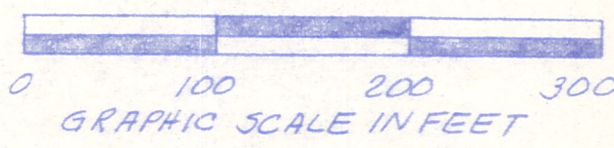
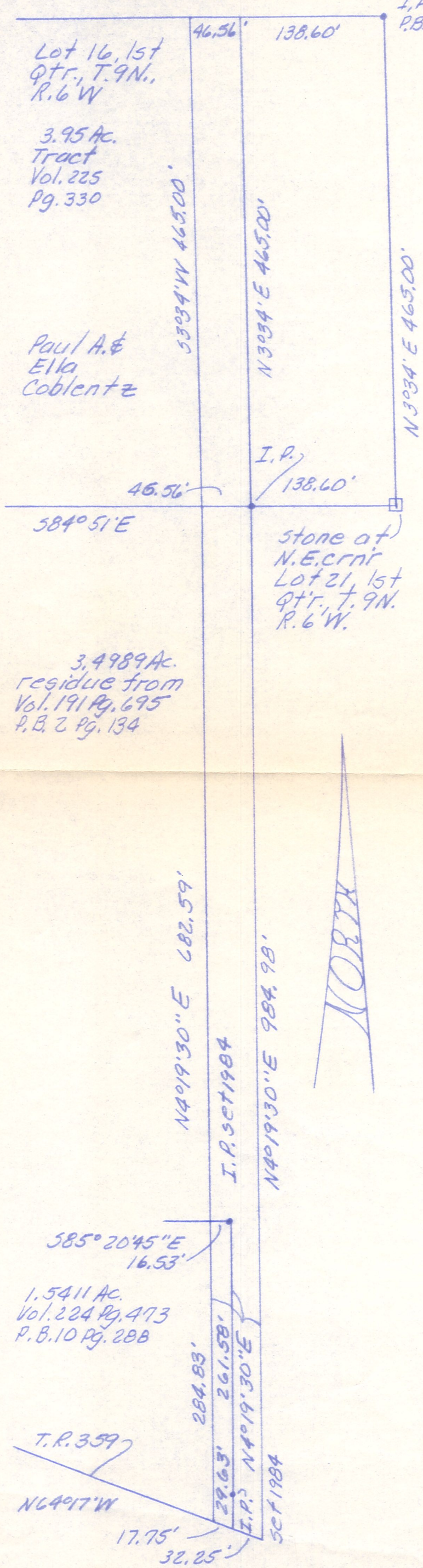
thence leaving T.R. 359 North 4°19'30"
East 967.42' to a point on the North
Line of Lot 21 and the South Line of
Lot 16;

thence North 3°34'00" East 465.00'
to a point;

thence South 84°51'00" East
46.56' to a point;

thence South 3°34'00" West 465.00'
to the point of beginning and there
to terminate.

Description compiled from the
above captioned data.



Known as part of Lots 16
& 21, 1st Qtr., Twp. 9 N., Ra.
6 W., of Berlin Twp., Hol.
Co., Ohio.

Robert L. Kasner P.S. 5193
P.E. 28820
5/12/87

