

REFERENCES:

DEED VOL. 252 PAGE 188
 O.R. VOL. 84 PAGE 781
 O.R. VOL. 173 PAGE 1913
 O.R. VOL. 175 PAGE 1284
 PLAT VOL. 2 PAGE 385
 PLAT VOL. 13 PAGE 43
 PLAT VOL. 12 PAGE 535
 BEARINGS FROM PLAT VOL. 13 PAGE 43

BERLIN TOWNSHIP
 1ST. QTR., LOT 17
 T-9 N; R-6 W
 HOLMES COUNTY, OHIO

SURVEYED FOR: ADEN HERSHBERGER

0 100 200

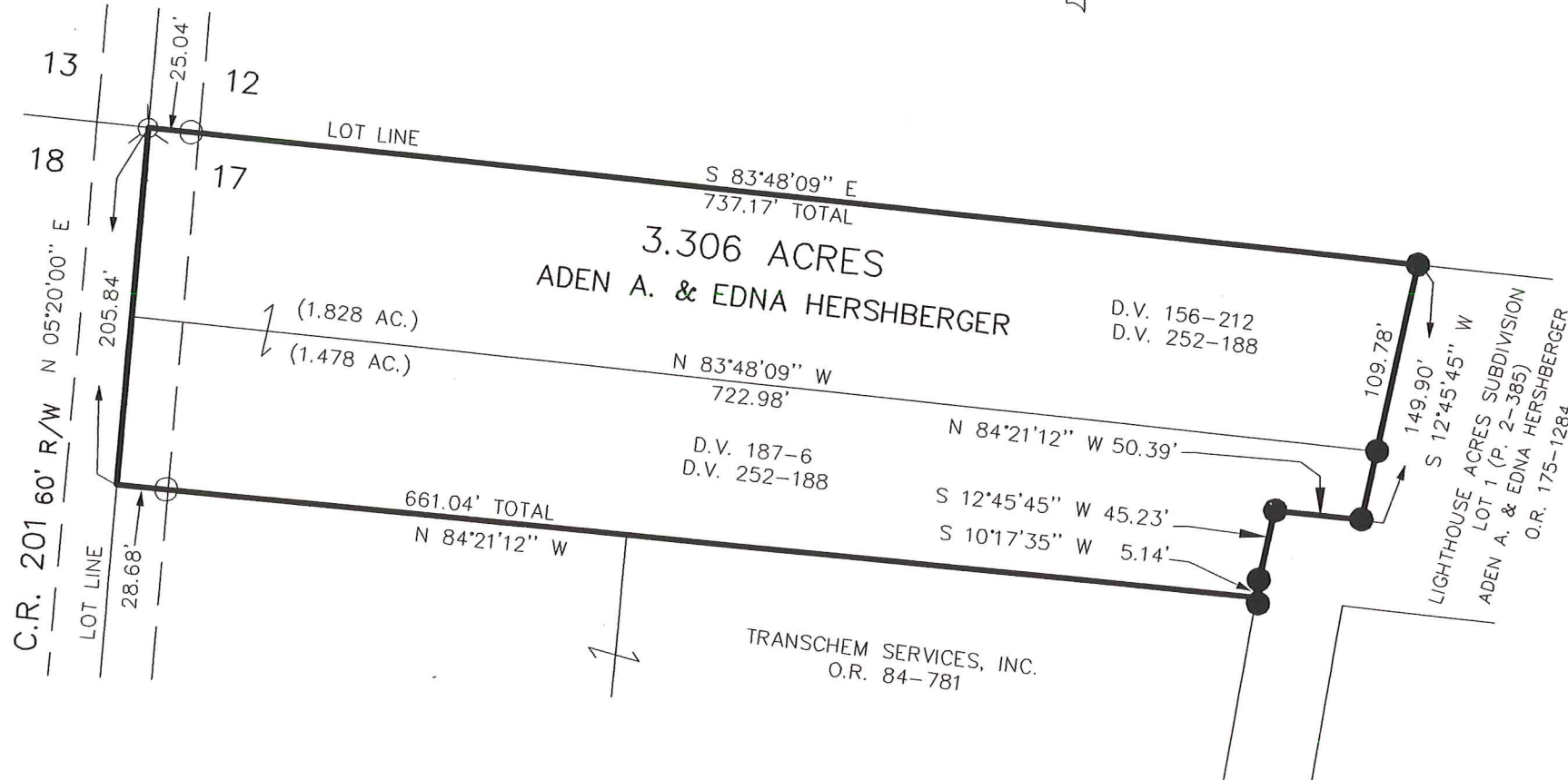


Scale 1" = 100'



- 5/8" REBAR FOUND
UNLESS OTHERWISE NOTED
- 5/8" REBAR WITH I.D. CAP SET
I.D. CAP MARKED "BAKER 6938"
- ⊙ P.K. NAIL SET

RECEIVED
 OCT 28 2004
 Hol. Co. Tax Map Office



I CERTIFY THIS SURVEY TO BE CORRECT TO THE BEST OF MY KNOWLEDGE.

JAMIE D. DARR P.S. 7755

DATE: OCTOBER 21, 2004

JDD/AEG

File name: C:\JOBS1\S-766-04\MLD



DONALD C. BAKER SURVEYING
 138 N. CLAY ST.
 MILLERSBURG, OHIO 44654
 PH. 330-674-4788
 FAX 330-674-6027