

BERLIN TOWNSHIP
 1ST. QTR. LOT 8
 T-9 N; R-6 W
 HOLMES COUNTY, OHIO

SURVEYED FOR: KAUFMAN REALTY

REFERENCES

O.R. VOL. 214 PAGE 3383
 PLAT VOL. 14 PAGE 289
 PLAT VOL. 16 PAGE 28
 PLAT VOL. 17 PAGE 869
 PLAT VOL. 19 PAGE 2360
 BEARINGS FROM PLAT VOL. 16 PAGE 28

INA MAE SCHROCK
 O.R. 74-637
 O.R. 174-321

BRADLEY J. BOYD
 KIM E. BOYD
 CHERYL A. HERMAN
 dba BOYD FAMILY FARM
 D.V. 272-130
 O.R. 231-3156

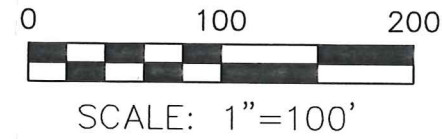
STAN C. BOYD, TRUSTEE
 JUDY A. BOYD, TRUSTEE
 O.R. 214-3383

CHARLENE L. MILLER
 D.V. 133-256
 D.V. 217-26
 O.R. 88-539
 O.R. 88-543
 250.00'

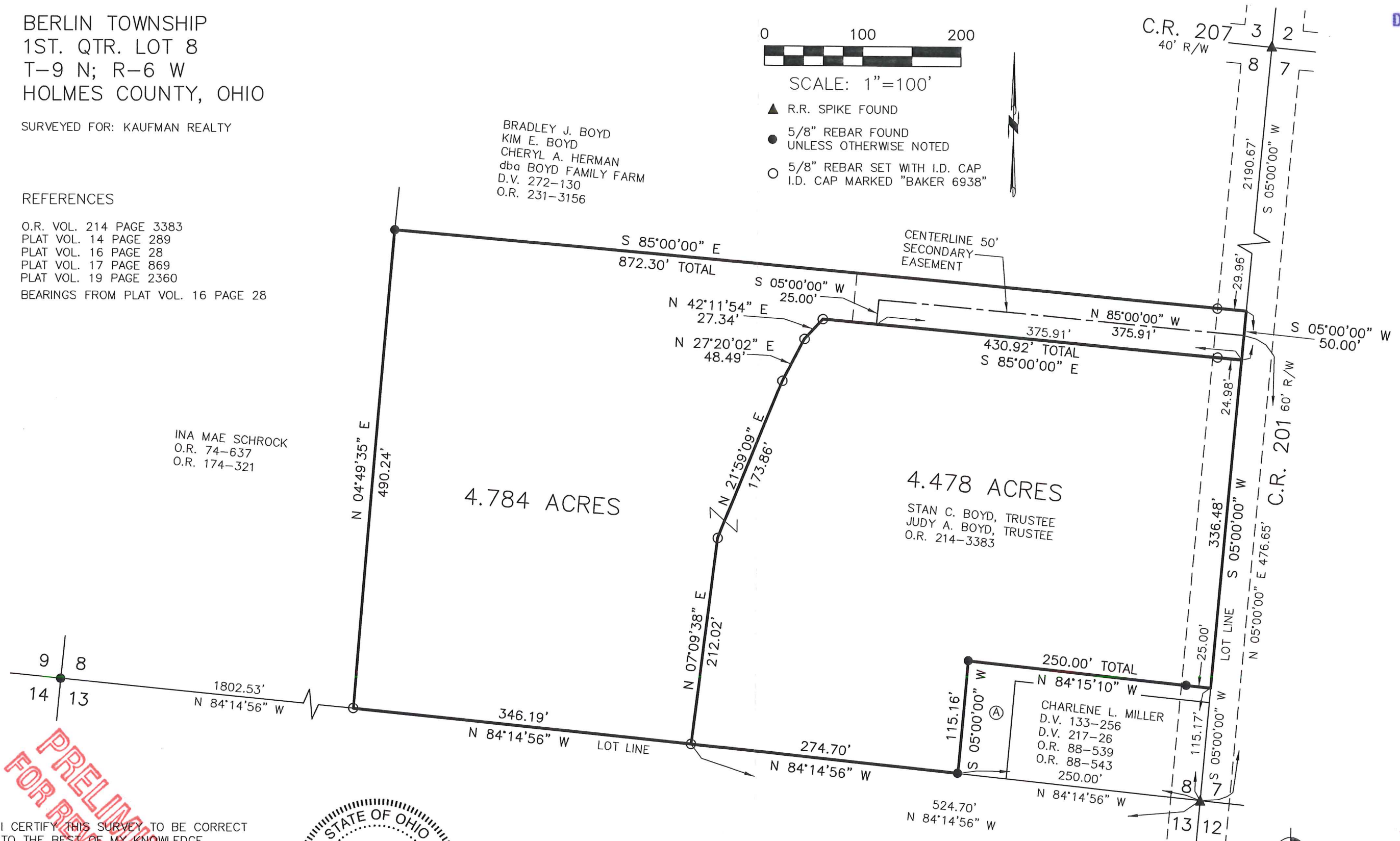
(A) CHARLENE L. MILLER
 D.V. 261-332
 O.R. 88-539
 O.R. 88-543

DONALD C. BAKER SURVEYING
 138 N. CLAY STREET
 MILLERSBURG, OHIO 44654
 PH. 330-674-4788
 FAX 330-674-6027

DEC 9 '15 AM 10:18



- ▲ R.R. SPIKE FOUND
- 5/8" REBAR FOUND UNLESS OTHERWISE NOTED
- 5/8" REBAR SET WITH I.D. CAP I.D. CAP MARKED "BAKER 6938"



PRELIMINARY
 FOR REVIEW ONLY

I CERTIFY THIS SURVEY TO BE CORRECT
 TO THE BEST OF MY KNOWLEDGE.

Donald C. Baker
 DONALD C. BAKER P.S. 6938
 DATE: DECEMBER 3, 2015
 C:\JG\FDB\JPD
 FILE NAME: WORK4\S-649-15\ALG

