

SCALE: 1"=30'

- 5/8" REBAR FOUND UNLESS OTHERWISE NOTED
- 5/8" REBAR WITH I.D. CAP SET I.D. CAP MARKED "BAKER 6938"
- DRILL HOLE SET IN CONC.

REFERENCES

- O.R. VOL. 177 PAGE 3112
- O.R. VOL. 177 PAGE 3114
- O.R. VOL. 157 PAGE 505
- O.R. VOL. 162 PAGE 312
- PLAT VOL. 18 PAGE 712
- PLAT VOL. 2 PAGE 129
- BEARINGS FROM PLAT VOL. 18 PAGE 712

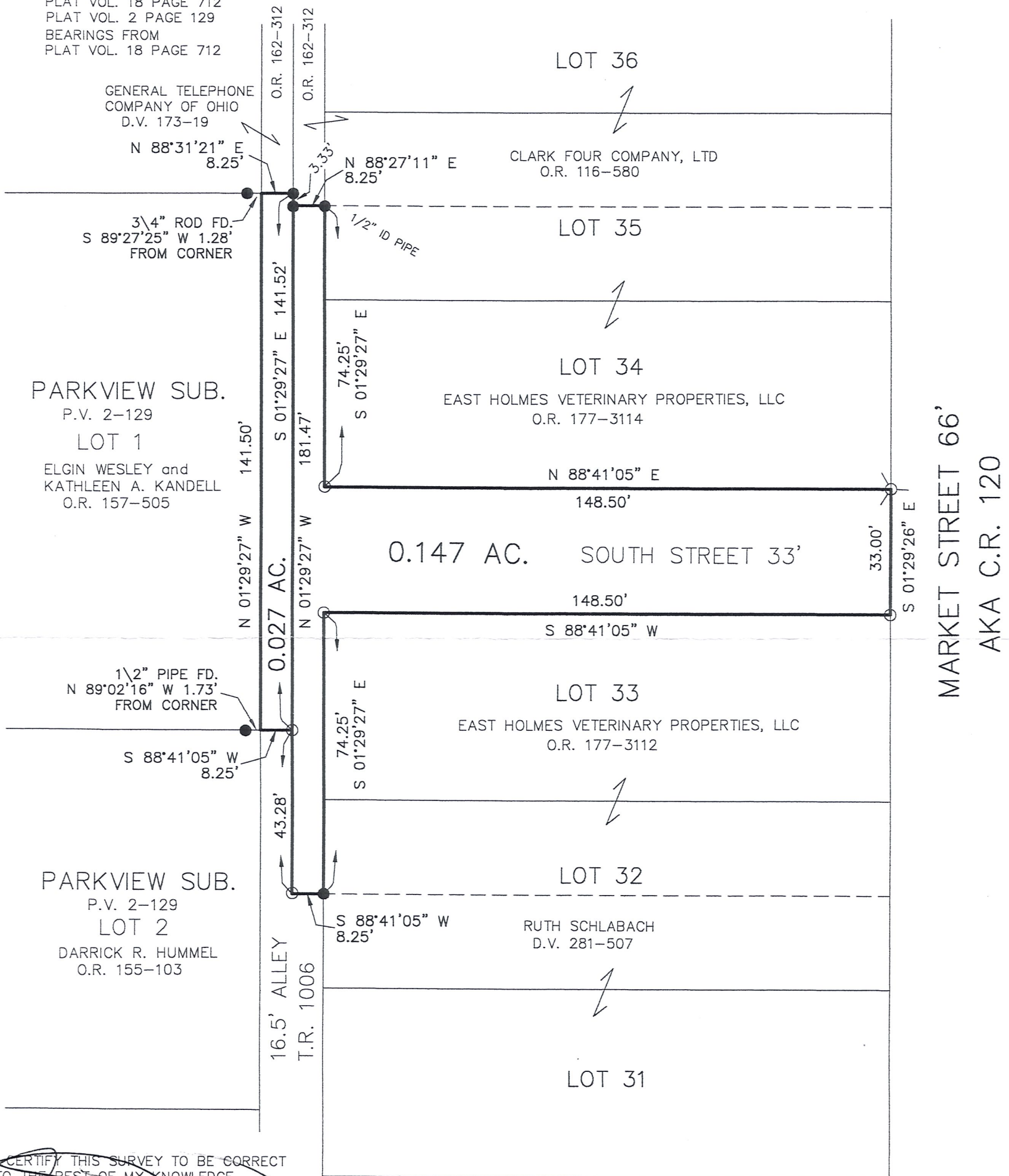
ALLEY AND STREET VACATION PLAT

VILLAGE OF BERLIN

BERLIN TOWNSHIP
N.W. QTR. SECTION 15
T-9 N; R-5 W
HOLMES COUNTY, OHIO

SURVEYED FOR: EAST HOLMES VETERINARY PROPERTIES, LLC

APR 2 '07 AM 11:39



PARKVIEW SUB.

P.V. 2-129

LOT 1

ELGIN WESLEY and
KATHLEEN A. KANDELL
O.R. 157-505

PARKVIEW SUB.

P.V. 2-129

LOT 2

DARRICK R. HUMMEL
O.R. 155-103

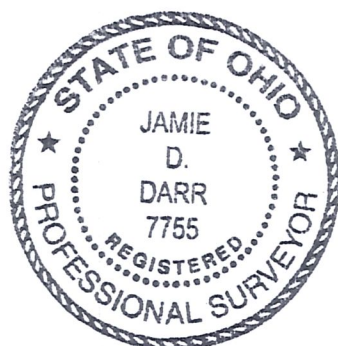
I CERTIFY THIS SURVEY TO BE CORRECT TO THE BEST OF MY KNOWLEDGE.

JAMIE D. DARR P.S. 7755
DATE: MARCH 23, 2007

JDD\AEG
File Name: WORK2\S-165-07



DONALD C. BAKER SURVEYING
138 N. CLAY ST.
MILLERSBURG, OHIO, 44654
PH. 330-674-4788
FAX. 330-674-6027



APPROVAL OF THE HOLMES COUNTY COMMISSIONERS

I HEREBY APPROVE THAT THE HOLMES COUNTY COMMISSIONERS HAVE APPROVED THE DETACHMENT OF THIS TRACT OF LAND AS SHOWN HEREON FROM HOLMES COUNTY.

RESOLUTION# _____

_____ DAY OF _____

CHAIRMAN, COUNTY COMMISSIONERS