

VILLAGE OF BERLIN
PART OF OUTLOT 7

BERLIN TOWNSHIP
S.W. QTR. SECTION 6
N.W. QTR. SECTION 15
T-9 N; R-5 W
HOLMES COUNTY, OHIO

SURVEYED FOR: JOHN YODER

REFERENCES:

DEED VOL. 241 PAGE 767

O.R. VOL. 21 PAGE 634

O.R. VOL. 27 PAGE 596

O.R. VOL. 67 PAGE 861

PLAT VOL. 2 PAGE 290

PLAT VOL. 11 PAGE 193

BEARINGS FROM PLAT

VOL. 2 PAGE 290

SARAH D. YODER
O.R. 21-634

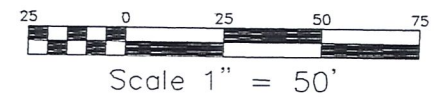
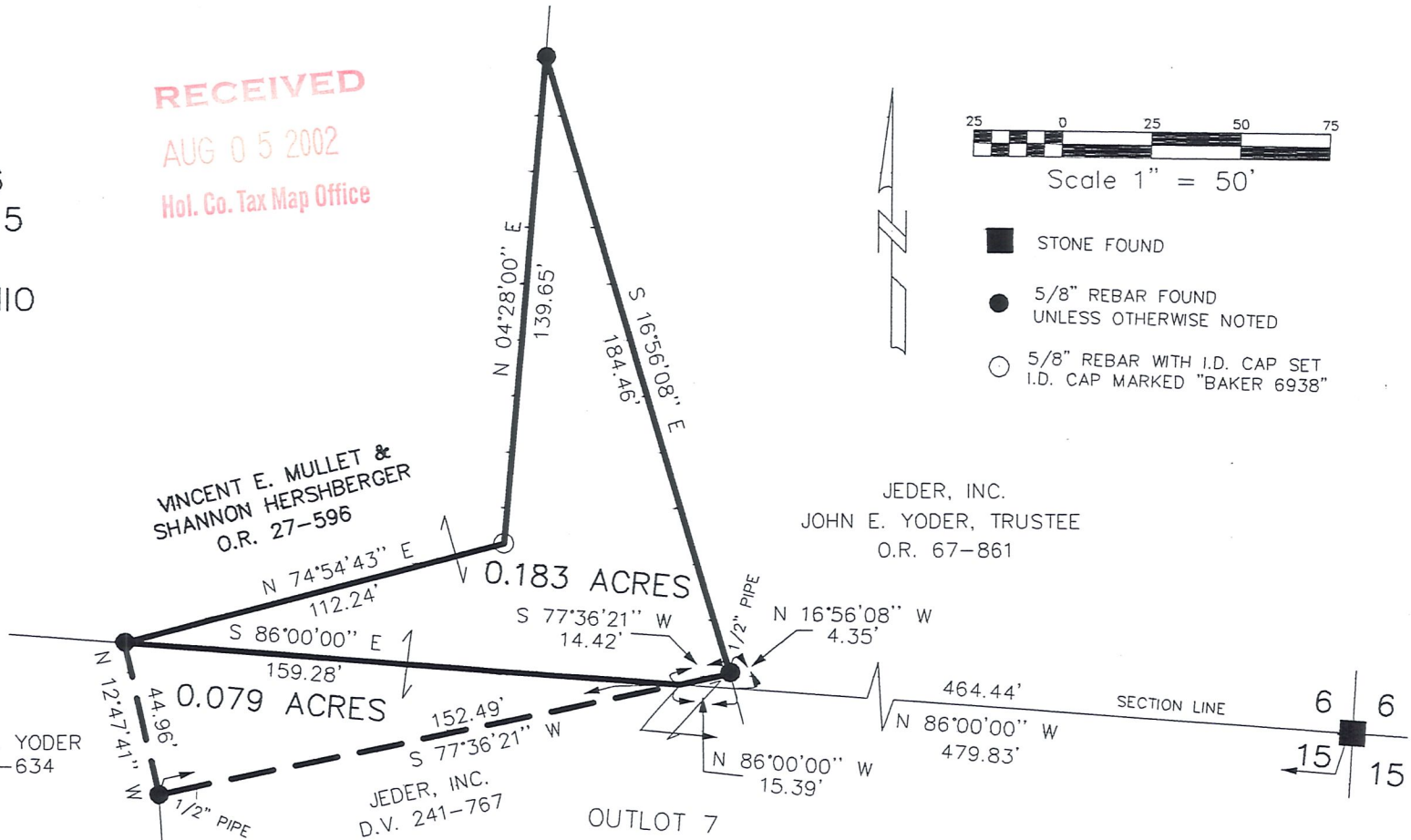
RECEIVED
AUG 05 2002
Hol. Co. Tax Map Office

VINCENT E. MULLET &
SHANNON HERSHBERGER
O.R. 27-596

JEDER, INC.
JOHN E. YODER, TRUSTEE
O.R. 67-861

JEDER, INC.
D.V. 241-767

OUTLOT 7



- STONE FOUND
- 5/8" REBAR FOUND UNLESS OTHERWISE NOTED
- 5/8" REBAR WITH I.D. CAP SET I.D. CAP MARKED "BAKER 6938"



DONALD C. BAKER SURVEYING
138 N. CLAY ST.
MILLERSBURG, OHIO 44654
PH. 330-674-4788
FAX 330-674-6027



I CERTIFY THIS SURVEY TO BE CORRECT TO THE BEST OF MY KNOWLEDGE.

Donald C. Baker
DONALD C. BAKER P.S. 6938
FDB/FCC DATE: JULY 24, 2002
File name: C:\JOBS1\S-593-02\ERZ