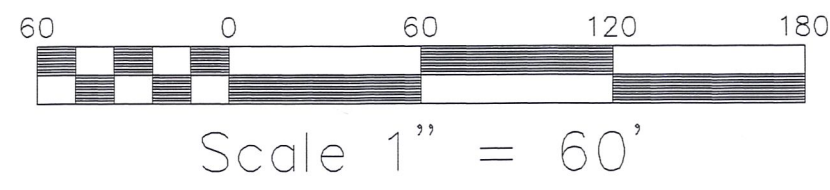


RECEIVED
 JAN 30 2002
 Hol. Co. Tax Map Office

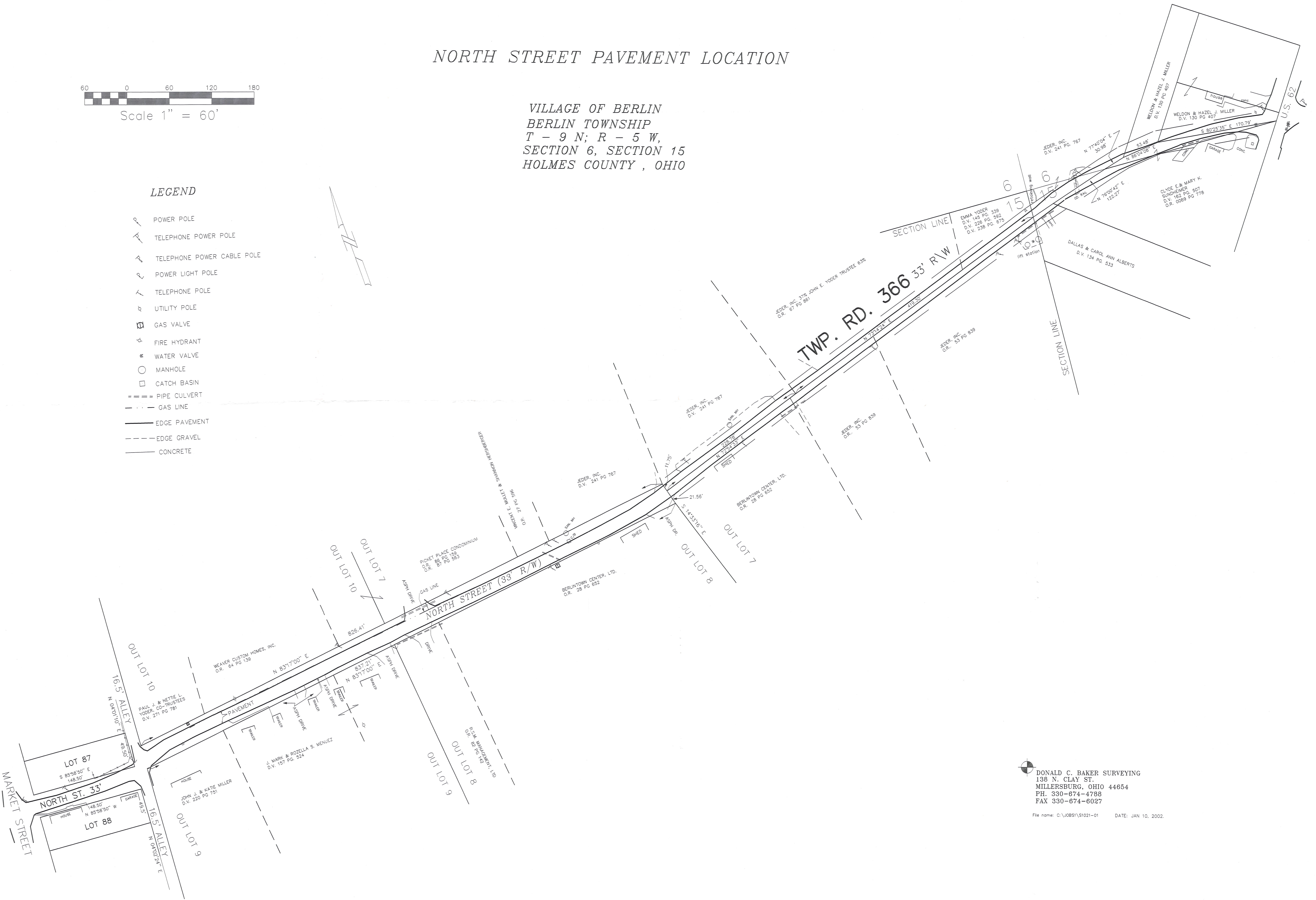


NORTH STREET PAVEMENT LOCATION

VILLAGE OF BERLIN
 BERLIN TOWNSHIP
 T - 9 N; R - 5 W,
 SECTION 6, SECTION 15
 HOLMES COUNTY, OHIO

LEGEND

- POWER POLE
- TELEPHONE POWER POLE
- TELEPHONE POWER CABLE POLE
- POWER LIGHT POLE
- TELEPHONE POLE
- UTILITY POLE
- GAS VALVE
- FIRE HYDRANT
- WATER VALVE
- MANHOLE
- CATCH BASIN
- PIPE CULVERT
- GAS LINE
- EDGE PAVEMENT
- EDGE GRAVEL
- CONCRETE



DONALD C. BAKER SURVEYING
 138 N. CLAY ST.
 MILLERSBURG, OHIO 44654
 PH. 330-674-4788
 FAX 330-674-6027
 File name: C:\JOBS\151021-01 DATE: JAN 10, 2002.