

I CERTIFY THIS PLAT & SURVEY TO BE CORRECT TO THE BEST OF MY KNOWLEDGE:

*Jim Shamp*

FEBRUARY 27, 1998

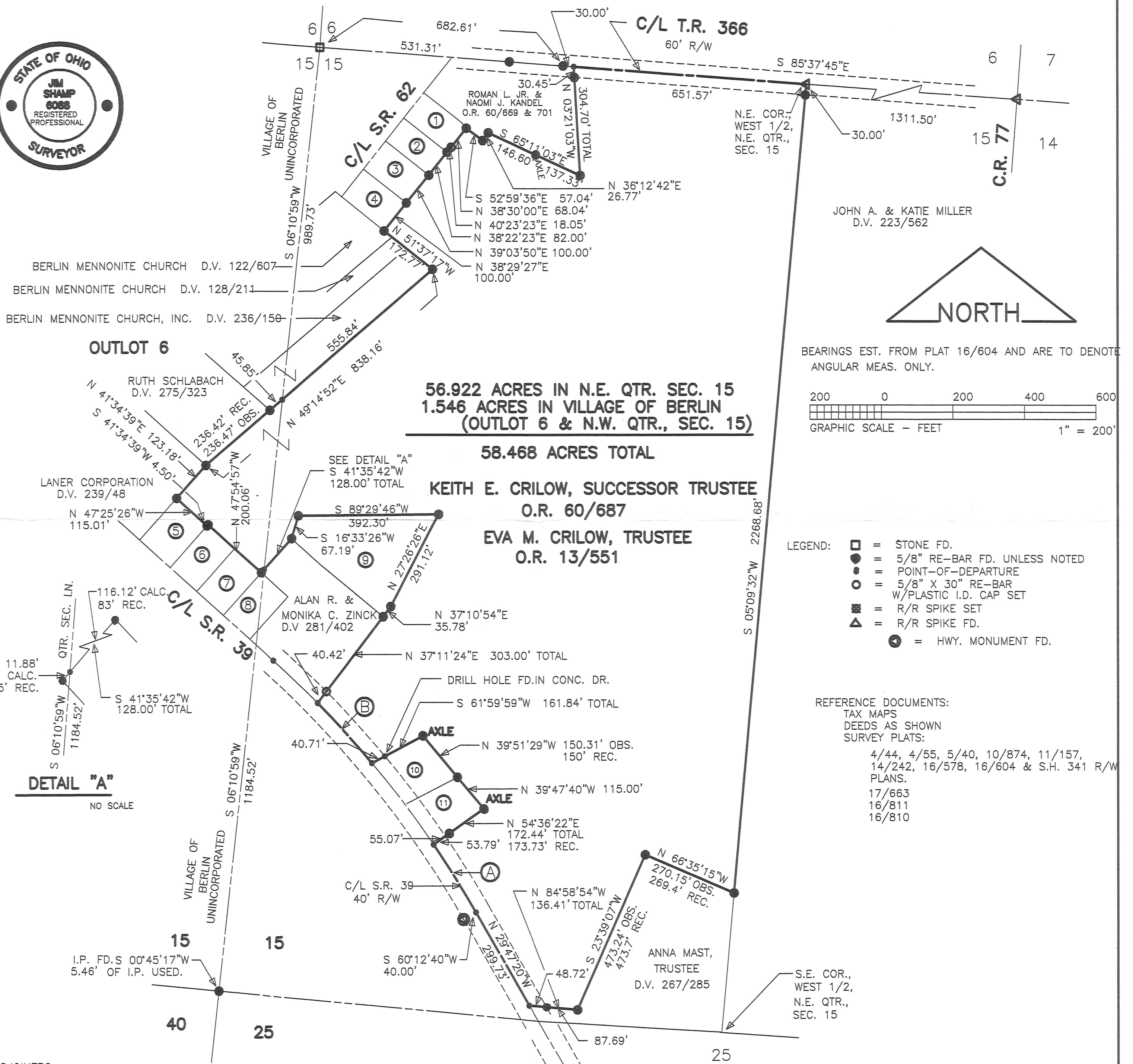
JIM SHAMP, REG. SUR. NO. S-6088

DATE

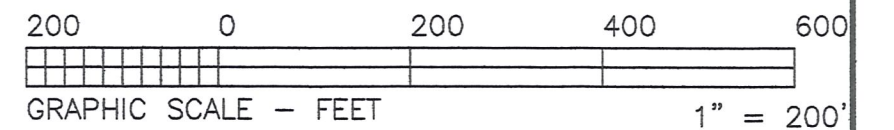
REVISED DECEMBER 15, 2000



CURVE	RADIUS	TANGENT	LENGTH	DELTA	DEGREE	CHORD	CH. BEARING
A	2864.79'	111.81'	223.50'	4°28'12"	2°00'00"	223.45'	N 32°01'26"W
B	2864.79'	112.79'	225.47'	4°30'34"	2°00'00"	225.41'	N 42°13'31"W



BEARINGS EST. FROM PLAT 16/604 AND ARE TO DENOTE ANGULAR MEAS. ONLY.



- LEGEND:**
- = STONE FD.
  - = 5/8" RE-BAR FD. UNLESS NOTED
  - = POINT-OF-DEPARTURE
  - = 5/8" X 30" RE-BAR W/PLASTIC I.D. CAP SET
  - = R/R SPIKE SET
  - ▲ = R/R SPIKE FD.
  - ⊙ = HWY. MONUMENT FD.

- REFERENCE DOCUMENTS:**
- TAX MAPS
  - DEEDS AS SHOWN
  - SURVEY PLATS:
  - 4/44, 4/55, 5/40, 10/874, 11/157, 14/242, 16/578, 16/604 & S.H. 341 R/W PLANS.
  - 17/663
  - 16/811
  - 16/810

<b>HEARTLAND Surveying, Inc.</b>			
Jim Shamp			
5210 T.R. 257		MILLERSBURG, OH 44654	
PH: 330-674-4698			
SURVEY		STATE	
EVA M. CRILOW		OHIO	
COUNTY	TWP.	RNG.	TWP.
HOLMES	BERLIN	5 W	9 N
N.E. & N.W. QUARTERS OF SECTION 15 & VILLAGE OF BERLIN (UNINCORPORATED)		970307	12/00