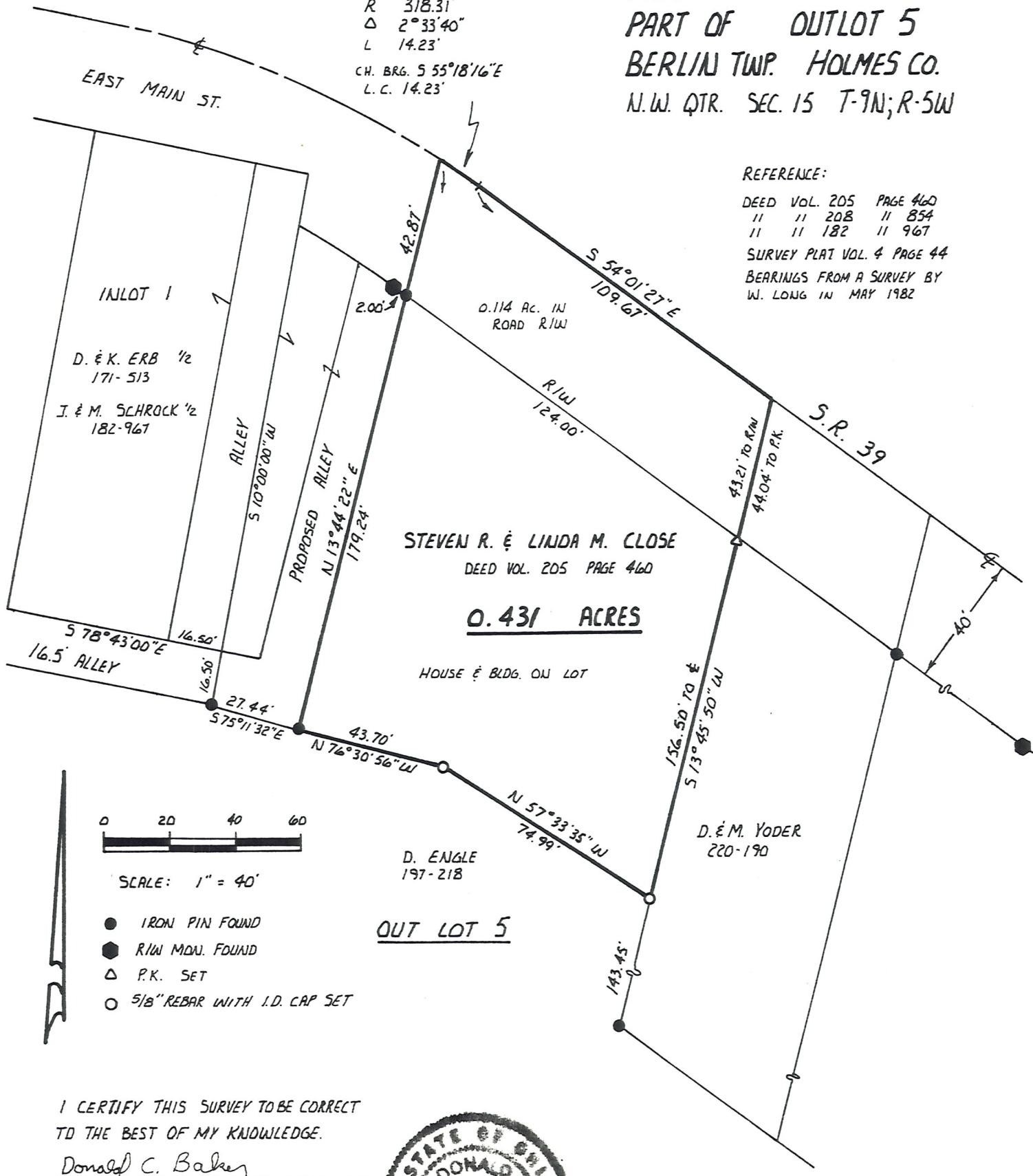


VILLAGE OF BERLIN
 PART OF OUTLOT 5
 BERLIN TWP. HOLMES CO.
 N.W. QTR. SEC. 15 T-9N; R-5W

R 318.31'
 Δ 2°33'40"
 L 14.23'
 CH. BRG. S 55°18'16"E
 L.C. 14.23'

REFERENCE:
 DEED VOL. 205 PAGE 460
 " " " 208 " 854
 " " " 182 " 967
 SURVEY PLAT VOL. 4 PAGE 44
 BEARINGS FROM A SURVEY BY
 W. LONG IN MAY 1982



SCALE: 1" = 40'

- IRON PIN FOUND
- ⬢ R/W MON. FOUND
- △ P.K. SET
- 5/8" REBAR WITH I.D. CAP SET

I CERTIFY THIS SURVEY TO BE CORRECT
 TO THE BEST OF MY KNOWLEDGE.

Donald C. Baker
 DONALD C. BAKER P.S. 6938
 PH. 377-4177
 DEC. 22, 1986

