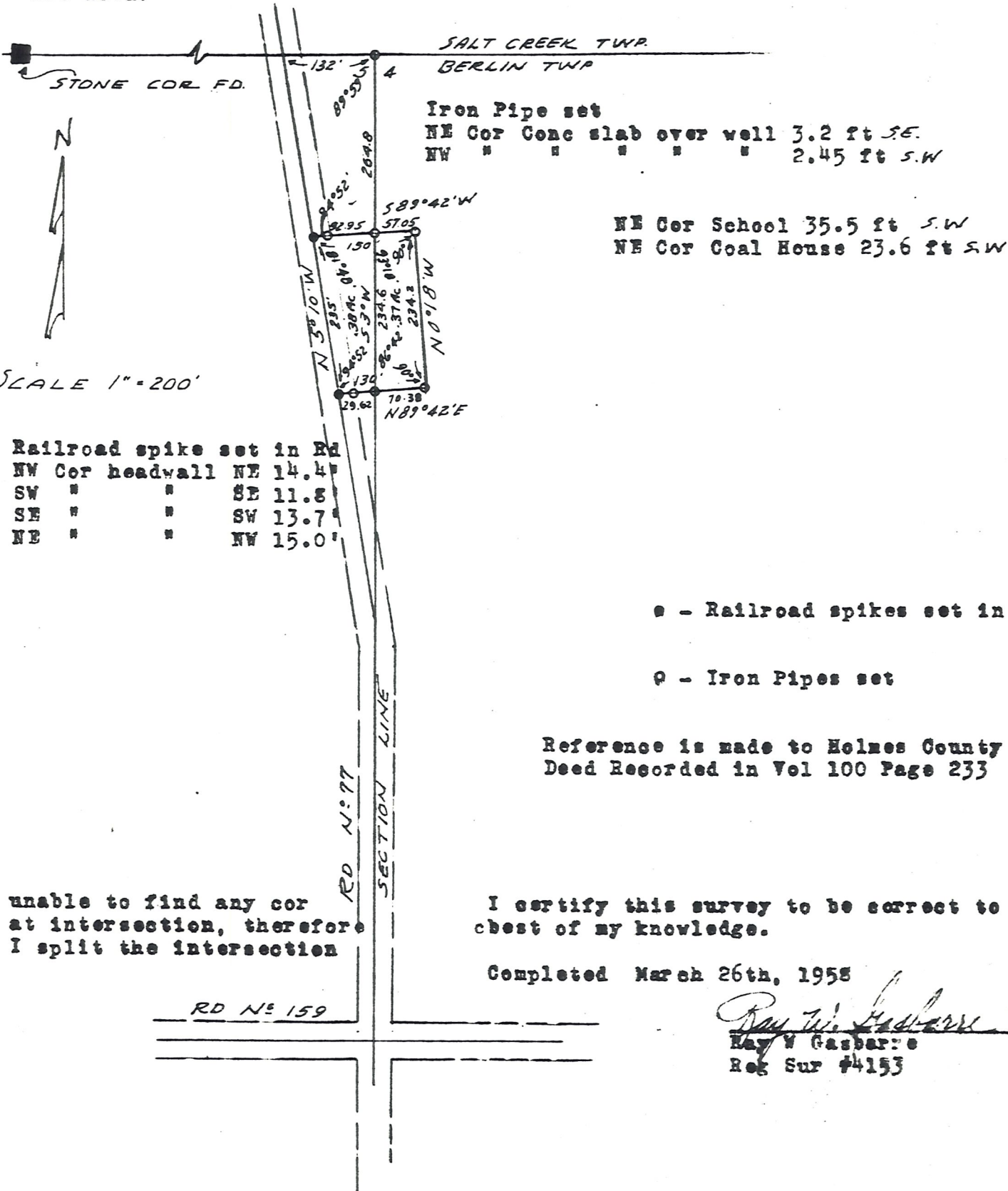


HOLMES COUNTY  
 BERLIN TOWNSHIP  
 NW QUARTER SEC 4 <sup>3 Sec. 5</sup>  
 TWP-9 RANGE -5

Made for  
 Andrew P Weaver

374

Road split at this point and deed measurement East used.



SCALE 1" = 200'

Railroad spike set in Rd		
NW Cor headwall	NE	14.4'
SW "	"	SE 11.8'
SE "	"	SW 13.7'
NE "	"	NW 15.0'

Iron Pipe set  
 NE Cor Conc slab over well 3.2 ft SE.  
 NW " " " " 2.45 ft SW

NE Cor School 35.5 ft SW  
 NE Cor Coal House 23.6 ft SW

- - Railroad spikes set in Road
- - Iron Pipes set

Reference is made to Holmes County  
 Deed Recorded in Vol 100 Page 233

I certify this survey to be correct to the  
 best of my knowledge.

Completed March 26th, 1958

*Ray W. Gasbarre*  
 Ray W Gasbarre  
 Reg Sur #4153

unable to find any cor  
 at intersection, therefore  
 I split the intersection

RD N:159