

BERLIN TOWNSHIP
 3RD. QTR., LOT 38
 T-9 N; R-5 W
 HOLMES COUNTY, OHIO

SWARTZ ACRES SUBDIVISION
 LOTS 1 & 3 (p. 2-403 & p. 2-408)

OCT 21 '10 AM 10:49

*These splits are
 to be done in
 conjunction with
 Swartz Acres
 Replat of Lots 1+3
 Subdivision Plat*

NOTE: THE 0.0004 ACRE PARCEL,
 THE 0.021 ACRE PARCEL AND THE
 0.708 ACRE PARCEL TO GO TO
 ADJOINER ONLY.

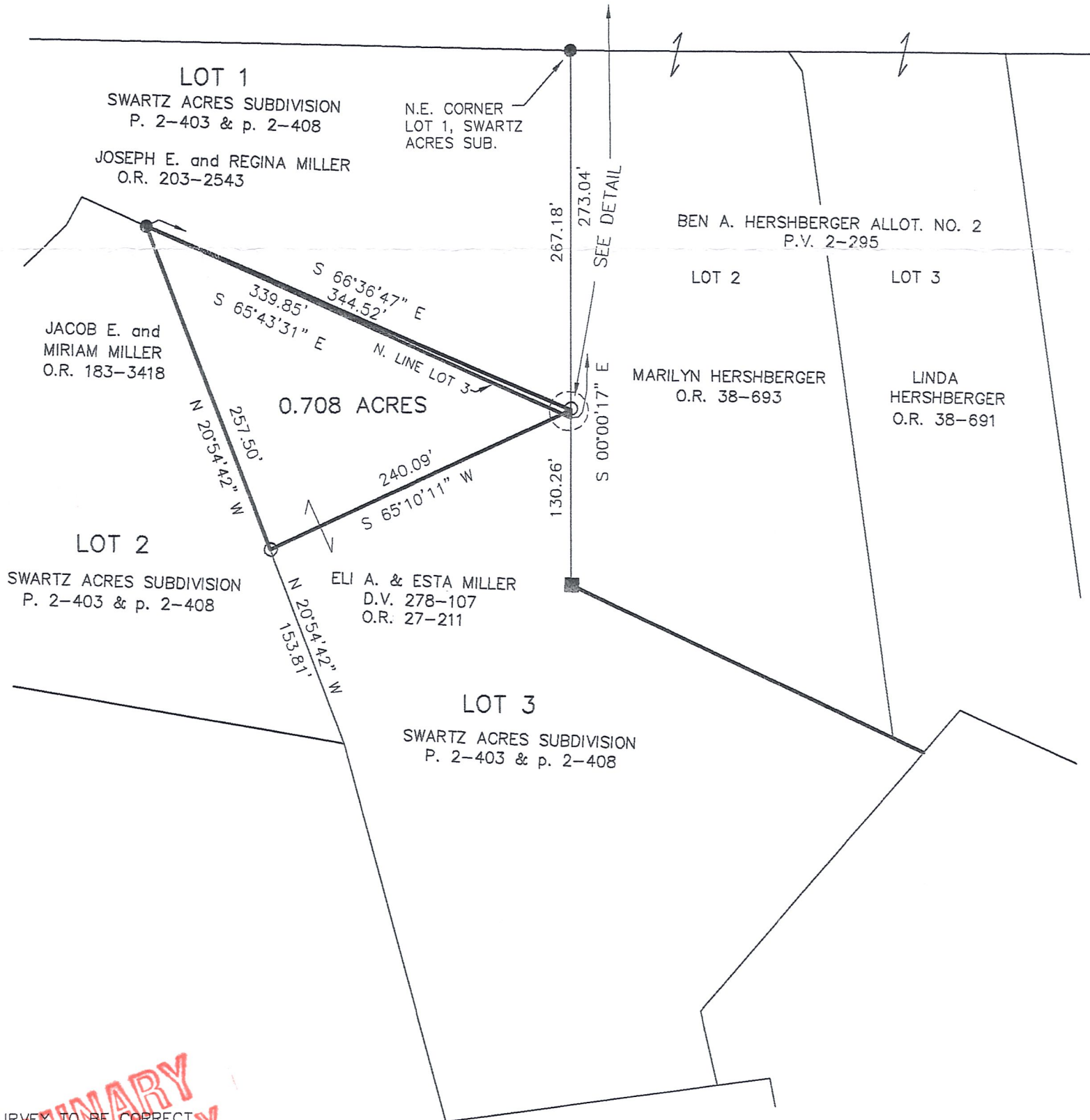
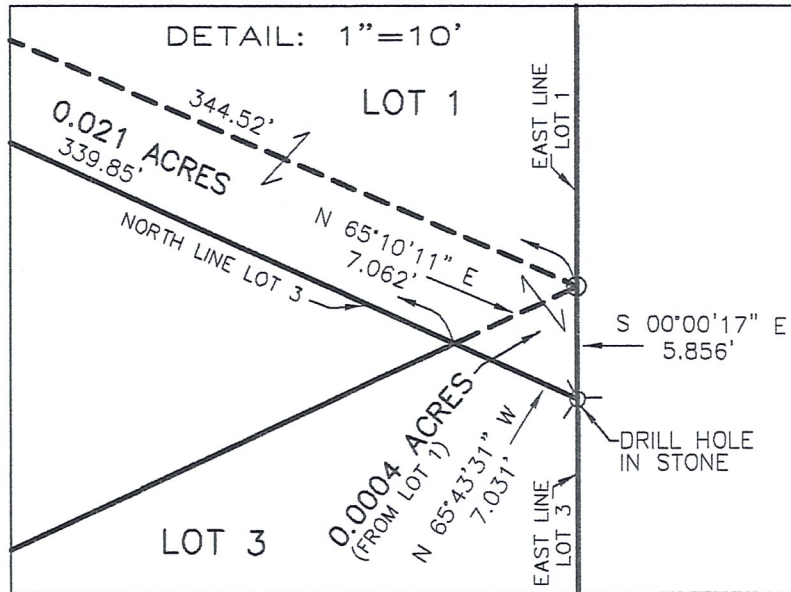


SCALE: 1"=100'

- STONE FOUND
- 5/8" REBAR FOUND UNLESS OTHERWISE NOTED
- 5/8" REBAR SET WITH I.D. CAP I.D. CAP MARKED "BAKER 6938"
- ⊗ DRILL HOLE

REFERENCES:

- DEED VOL. 232 PAGE 785
 - DEED VOL. 190 PAGE 696
 - DEED VOL. 278 PAGE 107
 - O.R. VOL. 27 PAGE 211
 - O.R. VOL. 27 PAGE 215
 - PLAT VOL. 7 PAGE 448
 - PLAT VOL. 16 PAGE 415
 - PLAT VOL. 17 PAGE 18
 - PLAT VOL. 2 PAGE 295
 - PLAT VOL. 17 PAGE 270
- BEARINGS FROM PLAT VOL. 17 PAGE 18



I CERTIFY THIS SURVEY TO BE CORRECT
 TO THE BEST OF MY KNOWLEDGE

DONALD C. BAKER P.S. 6938
 DATE: APRIL 20, 2010
 REVISED: OCT. 20, 2010
 FDB\KES
 WORK4\S-124-10\MLD



DONALD C. BAKER SURVEYING
 138 N. CLAY STREET
 MILLERSBURG, OHIO 44654
 PH. 330-674-4788
 FAX 330-674-6027

**PRELIMINARY
 FOR REVIEW ONLY**