

# Berlin Township 3rd Qtr. Lot 25 T-9 N; R-5 W Holmes County, Ohio

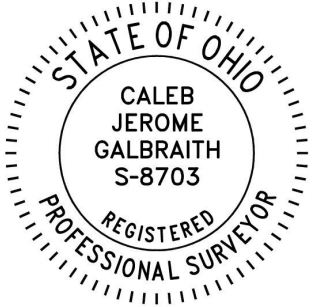
Wayne J. Beachy, trustee of the Wayne J. Beachy Revocable Trust  
Wayne J. Beachy, successor trustee of the Amanda Beachy Revocable Trust  
O.R. Vol. 161 Page 333  
O.R. Vol. 280 Page 4851

SURVEYED FOR: James Beachy

**REFERENCES:**

- Deeds as shown
- Plat Vol. 19 Page 886
  - Plat Vol. 19 Page 258
  - Plat Vol. 14 Page 135
  - Plat Vol. 14 Page 467
  - Plat Vol. 14 Page 135
  - Plat Vol. 19 Page 4282
  - Plat Vol. 8 Page 544
  - Plat Vol. 19 Page 4640
  - Plat Vol. 11 Page 158
  - Plat Vol. 18 Page 391
  - Plat Vol. 19 Page 2137
  - Plat Vol. 19 Page 741
  - Plat Vol. 4 Page 74
  - Plat Vol. 6 Page 159

Basis of Bearing Grid North, Ohio State Plane Coordinate System, North Zone, NAD 83 (2011). Distances shown hereon are ground distances. To obtain grid distances multiply distances by scale factor of 0.999240938.

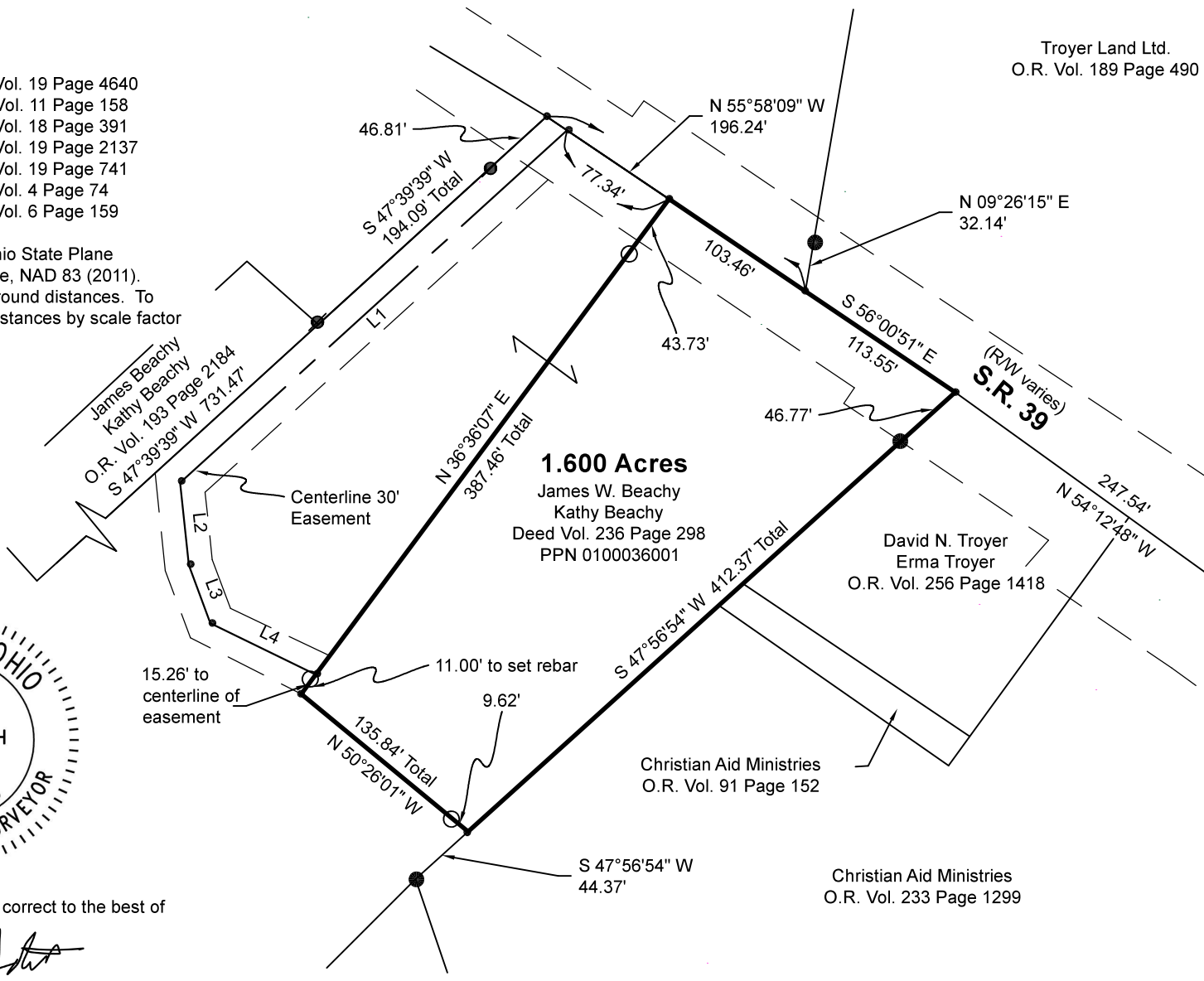


I certify this survey to be correct to the best of my knowledge

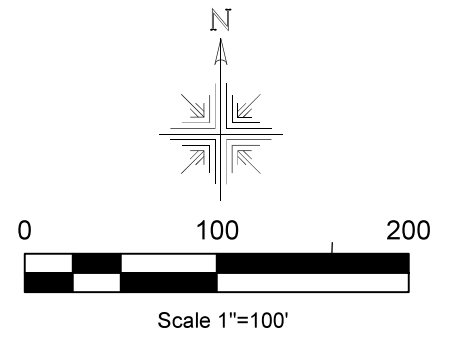
*Caleb Galbraith*

Caleb Jerome Galbraith P.S. 8703  
Date: June 12, 2024  
Job ID: 8224

Pioneer Surveying & Services, LLC.  
5434 Township Road 377  
Millersburg, Ohio 44654  
Phone: 330-231-0497  
Email: caleb@pioneersurveyingandservices.com



| LINE | BEARING       | DISTANCE |
|------|---------------|----------|
| L1   | S 47°39'39" W | 328.91'  |
| L2   | S 05°56'59" E | 52.09'   |
| L3   | S 20°26'57" E | 38.91'   |
| L4   | S 64°02'05" E | 73.74'   |



- 5/8" Rebar Found unless noted
- ⊗ 5/8" Capped Pin Found "Baker"
- 5/8" Capped Pin Set "Galbraith-8703"
- ▲ Railroad Spike Found
- Point

