

BERLIN TOWNSHIP  
3RD. QTR., LOT 25  
T-9 N; R-5 W  
HOLMES COUNTY, OHIO

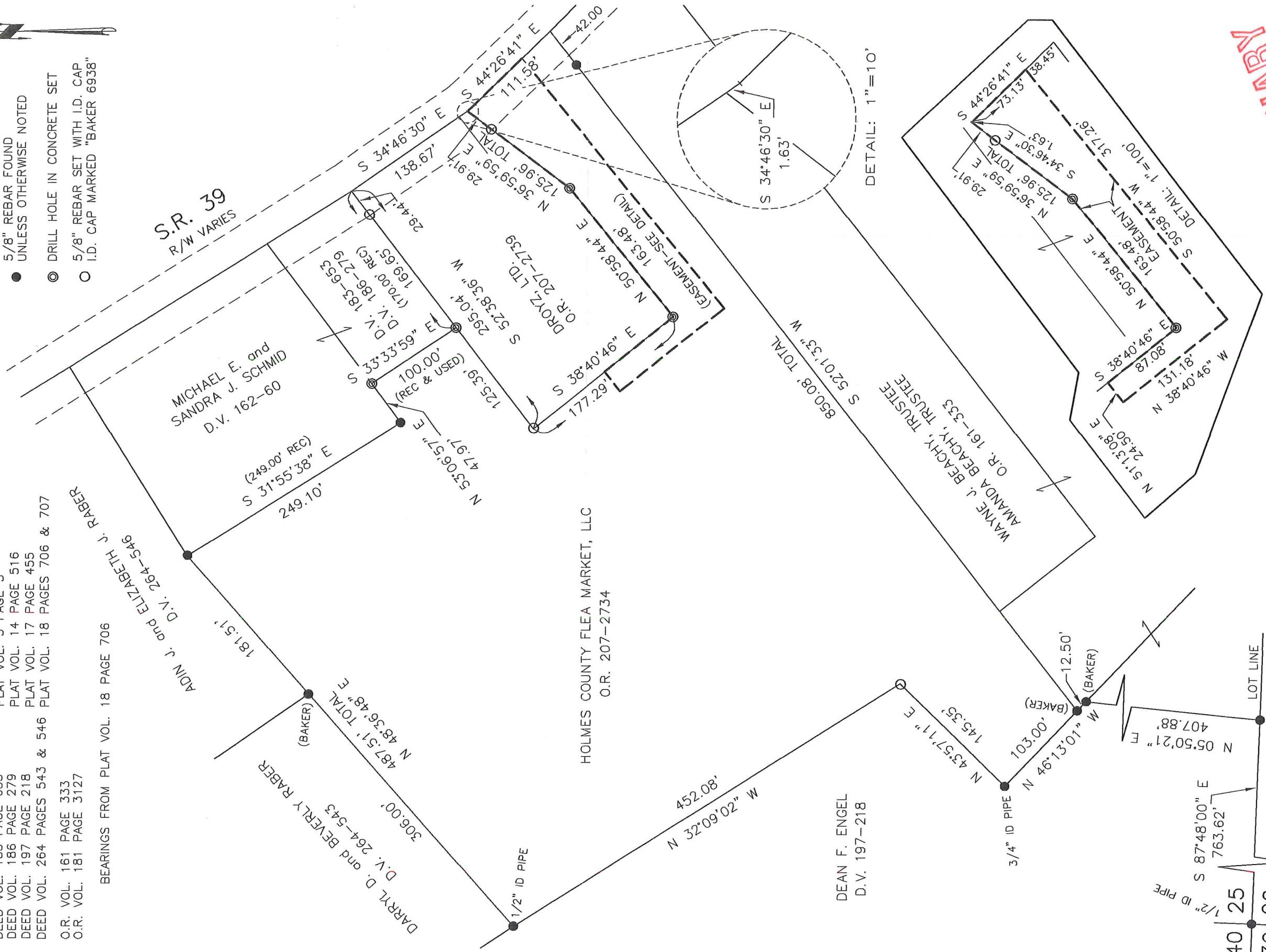
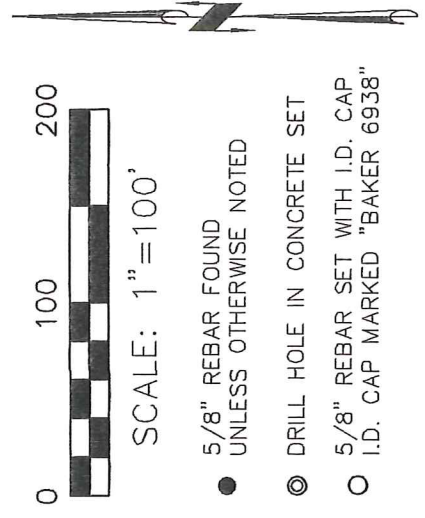
EASEMENT SURVEY

SURVEYED FOR: JIM GAUSE

REFERENCES

- DEED VOL. 162 PAGE 60
- DEED VOL. 183 PAGE 653
- DEED VOL. 186 PAGE 279
- DEED VOL. 197 PAGE 218
- DEED VOL. 264 PAGES 543 & 546
- DEED VOL. 161 PAGE 333
- O.R. VOL. 181 PAGE 3127
- PLAT VOL. 4 PAGES 8, 87, 130 & 161
- PLAT VOL. 5 PAGE 3
- PLAT VOL. 14 PAGE 516
- PLAT VOL. 17 PAGE 455
- PLAT VOL. 18 PAGES 706 & 707

BEARINGS FROM PLAT VOL. 18 PAGE 706



I CERTIFY THIS SURVEY TO BE CORRECT TO THE BEST OF MY KNOWLEDGE.

**PRELIMINARY ONLY**

DONALD C. BAKER  
DATE: OCT 11 2008  
KES\FDB  
FILE NAME: WORK4\S-447-08\ERZ  
REVISED NOVEMBER 17, 2008

P.S. 6938

DONALD C. BAKER SURVEYING  
138 N. CLAY STREET  
MILLERSBURG, OHIO 44654  
PH. 330-674-4788  
FAX 330-674-6027