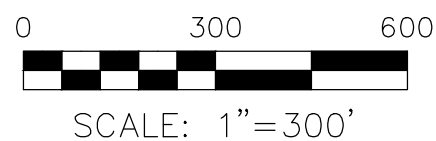


RICHLAND TOWNSHIP  
S.W. QTR. SECTION 16  
N.W. QTR. SECTION 16  
T-8 N; R-8 W  
HOLMES COUNTY, OHIO

SURVEYED FOR: KAUFMAN REALTY

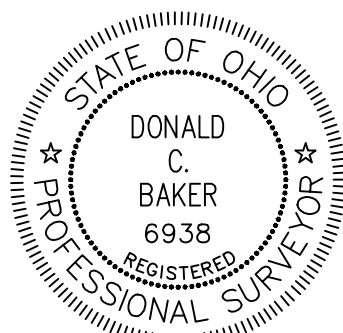


- STONE FOUND
- 5/8" REBAR FOUND UNLESS OTHERWISE NOTED
- DRILL HOLE IN STONE FD.
- △ POINT
- 5/8" REBAR SET WITH I.D. CAP MARKED "BAKER SURVEYING"

BASIS OF BEARINGS FROM OHIO STATE PLANE COORDINATE SYSTEM, NORTH ZONE, N.A.D. 83, 2011 ADJUSTMENT

REFERENCES

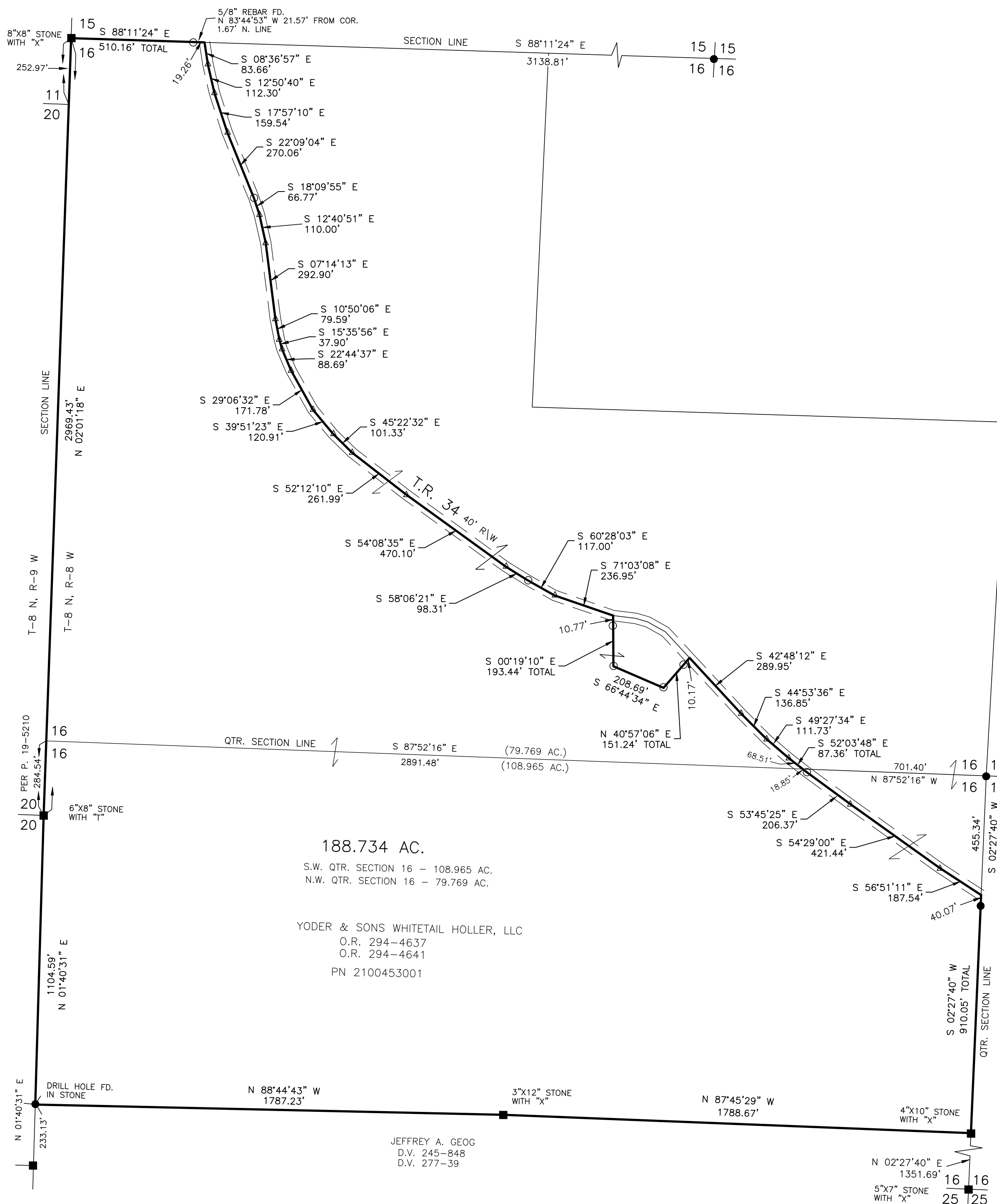
- O.R. VOL. 294 PAGE 4641
- PLAT VOL. 9 PAGE 223
- PLAT VOL. 19 PAGE 4103
- PLAT VOL. 19 PAGE 5697
- PLAT VOL. 19 PAGE 4989
- PLAT VOL. 19 PAGE 5210



I CERTIFY THIS SURVEY TO BE CORRECT TO THE BEST OF MY KNOWLEDGE.

*Donald C. Baker*  
DONALD C. BAKER P.S. 6938  
DATE: MAY 8, 2026  
VJD  
FILE NAME: WORK7\S-26-336  
ENGINEERING ASSOCIATES, INC. DBA BAKER SURVEYING

BAKER SURVEYING  
138 N. CLAY STREET  
MILLERSBURG, OHIO 44654  
PH. 330-674-4788  
EMAIL: bakersurveying@gmail.com



188.734 AC.  
S.W. QTR. SECTION 16 - 108.965 AC.  
N.W. QTR. SECTION 16 - 79.769 AC.  
YODER & SONS WHITETAIL HOLLER, LLC  
O.R. 294-4637  
O.R. 294-4641  
PN 2100453001

JEFFREY A. GEOG  
D.V. 245-848  
D.V. 277-39

APPROVED FOR TRANSFER ONLY  
NO SUBDIVISION PLAT REQUIRED  
(O.R.C. 711.001 & 711.131)  
Lot(s) not for building unless approved by Board of Health  
HOLMES CO. PLANNING COMMISSION  
By AO Date 5/15/2026



Plat Approved  
Holmes County Map Office  
5/14/2026 MM