

Paint Township  
S.W. Qtr. Section 33  
T-15 N; R-11 W  
Holmes County, Ohio

SURVEYED FOR: James Kurtz

MASTER PLAT: The Purpose of this survey.

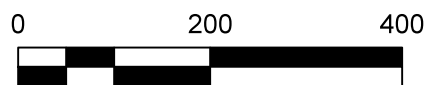
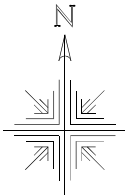
Action 1.) Convey 36.835 acres.

Action 2.) Convey 35.139 acres.

REFERENCES:  
Deeds as shown

- Plat Vol. 19 Page 4522
- Plat Vol. 17 Page 784
- Plat Vol. 19 Page 4799
- Plat Vol. 19 Page 3217

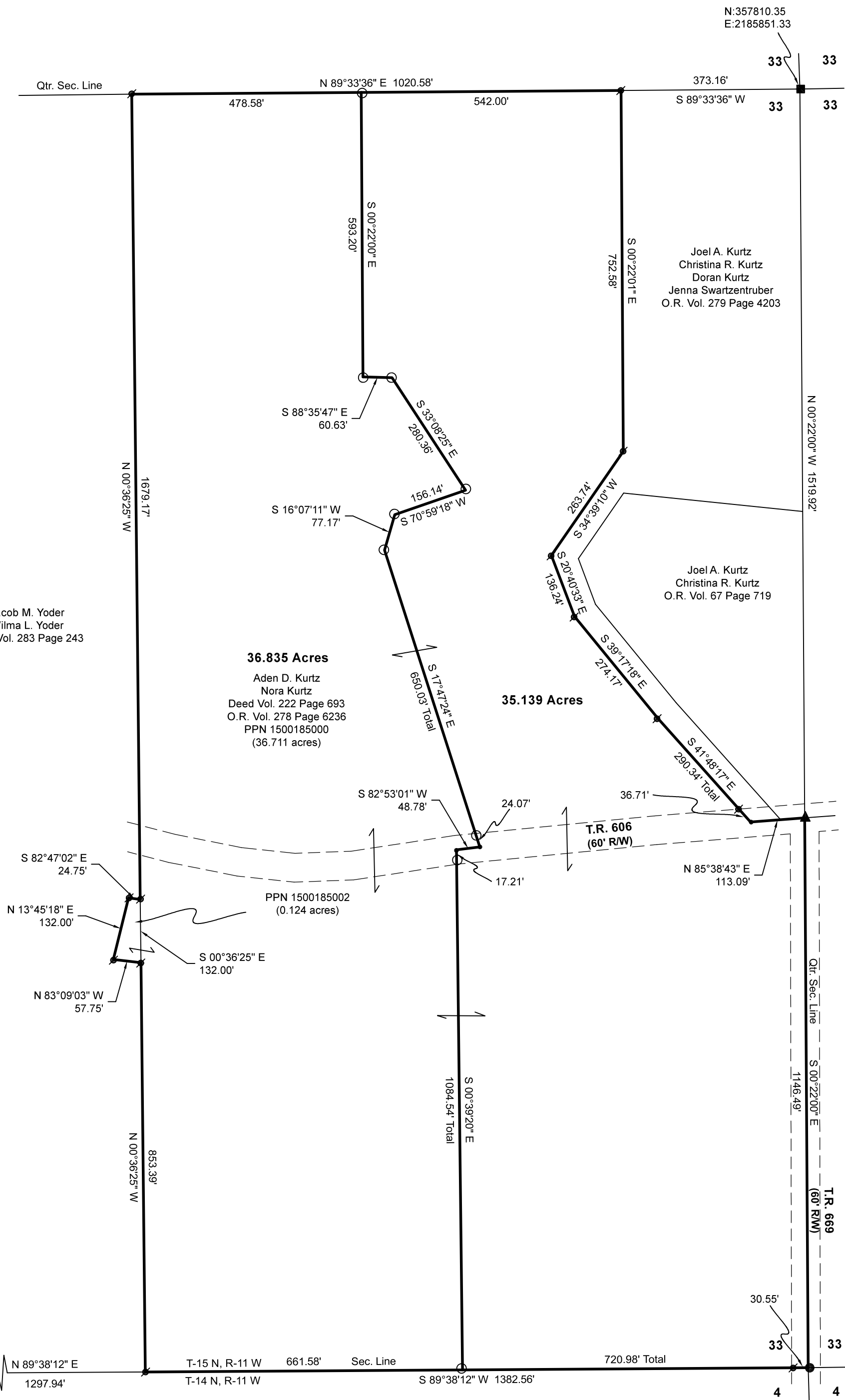
Basis of Bearing are from Grid North, Ohio State Plane Coordinate System, North Zone, NAD 83 (2011). All distances shown hereon are ground distances. To obtain grid distance multiply the distances by a scale factor of 0.999912726.



Scale 1"=200'

- 5/8" Rebar Found Capped "Baker"
- RR Spk. Found
- 5/8" Rebar Found unless noted
- Stone Found
- 5/8" Capped Pin Set "Galbraith-8703"
- Point

Jacob M. Yoder  
Wilma L. Yoder  
O.R. Vol. 283 Page 243



I certify this survey to be correct to the best of my knowledge.

*Caleb Jerome Galbraith*

Caleb Jerome Galbraith P.S. 8703  
Date: April 15, 2026  
Job ID: 1926

Pioneer Surveying & Services, LLC.  
5434 Township Road 377  
Millersburg, Ohio 44654  
Phone: 330-231-0497  
Email: caleb@pioneersurveyingandservices.com



APPROVED FOR TRANSFER ONLY  
NO SUBDIVISION PLAT REQUIRED  
(O.R.C. 711.001 & 711.131)  
Lot(s) not for building unless approved by Board of Health  
HOLMES CO. PLANNING COMMISSION  
By AO Date 5/28/2026



Plat Approved  
Holmes County Map Office  
5/27/2026 Rg