

ORV 296 Pg 1960
 ORV 296 Pg 1964
 ORV 296 Pg 1967
 ORV 296 Pg 1970

Clark Township
S.W. Qtr. Sec. 13
N.W. Qtr. Sec 18
T-8 N; R-5 W
Holmes County, Ohio

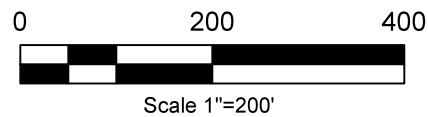
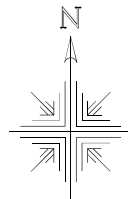
SURVEYED FOR: RES Jay Hershberger

REFERENCES:

Deeds as shown

Plat Vol. 19 Page 5009 Plat Vol. 19 Page 2632
 Plat Vol. 19 Page 271 Plat Vol. 19 Page 2631
 Plat Vol. 19 Page 130 Plat Vol. 19 Page 2795

Basis of Bearing Grid North, Ohio State Plane Coordinate System, North Zone, NAD 83 (2011). Distances shown hereon are ground distances. To obtain grid distances multiply distances by scale factor of 0.999947043.



LINE	BEARING	DISTANCE
L1	N 10°42'06" E	250.64'
L2	S 01°20'39" W	62.42'
L3	S 27°59'07" E	154.42'
L4	N 82°42'55" W	50.00'
L5	N 82°42'55" W	70.00'
L6	S 89°32'44" E	370.50'
L7	S 89°32'44" E	55.68'
L8	S 89°32'44" E	155.52'
L9	N 77°15'48" W	141.13'
L10	N 77°15'48" W	61.17'
L11	N 77°15'48" W	392.47'
L12	N 08°23'13" W	498.07'
L13	N 08°23'13" W	249.65'
L14	N 08°23'13" W	84.50'
L15	S 09°35'01" E	240.18'
L16	S 09°35'01" E	98.00'
L17	S 09°35'01" E	495.04'
L18	N 78°30'57" W	53.17'
L19	N 78°30'57" W	287.48'
L20	S 00°41'55" W	126.53'

MASTER PLAT The purpose of this survey.

- Action 1) Convey 3.604 Acres to adjoiner. ■ Stone Found
- Action 2) Convey 2.250 Acres to adjoiner. ● 5/8" Rebar Found
- Action 3) Convey 1.118 Acres to adjoiner. ○ 3/4" Rebar Found Capped "Baker"
- Action 4) Convey 4.622 Acres. ○ 5/8" Capped Pin Set "Galbraith-8703"
- Point

Jay Bryan Hershberger
 Leona M. Hershberger
 O.R. Vol. 251 Page 2028

Albert E. Raber
 Marie Raber
 O.R. Vol. 173 Page 3048
 PPN 3300311000

Jay Bryan Hershberger
 Leona M. Hershberger
 O.R. Vol. 251 Page 2024
 PPN 3300330002

Jay Bryan Hershberger
 Leona M. Hershberger
 O.R. Vol. 251 Page 2028
 PPN 3300341002

Aden D. Burkholder
 Regina Burkholder
 O.R. Vol. 273 Page 356

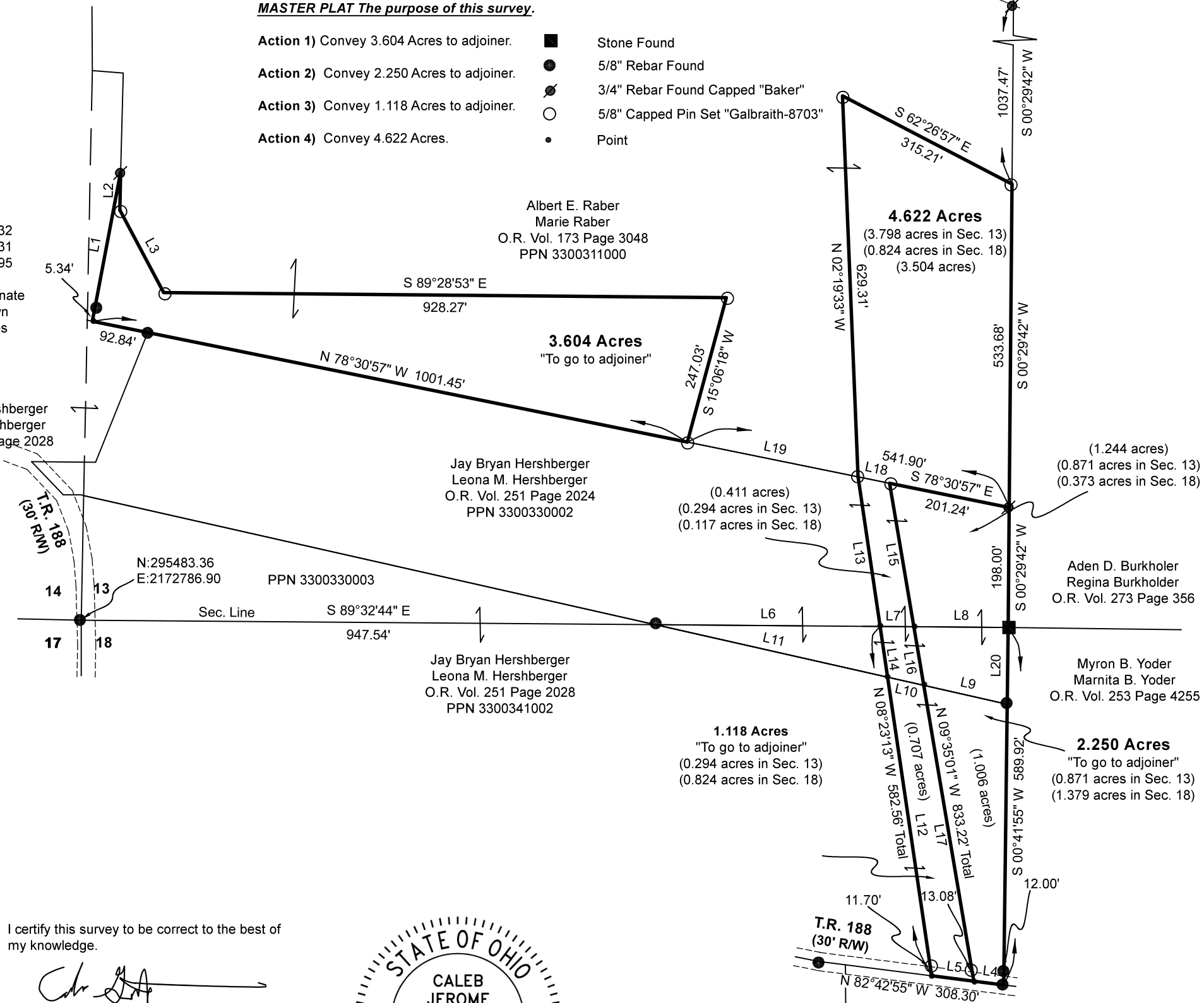
Myron B. Yoder
 Marnita B. Yoder
 O.R. Vol. 253 Page 4255

Marvin J. Raber
 Dorothy A. Raber
 O.R. Vol. 252 Page 6376

I certify this survey to be correct to the best of my knowledge.

Caleb Galbraith

Caleb Jerome Galbraith P.S. 8703
 Date: October 7, 2025
 Job ID: 19825



Pioneer Surveying & Services, LLC.
 5434 Township Road 377
 Millersburg, Ohio 44654
 Phone: 330-231-0497
 Email: caleb@pioneersurveyingandservices.com



APPROVED FOR TRANSFER ONLY
 NO SUBDIVISION PLAT REQUIRED
 (O.R.C. 711.001 & 711.131)
 Lot(s) not for building unless approved by Board of Health
 HOLMES CO. PLANNING COMMISSION
 By AO Date 4/30/2026



Plat Approved
 Holmes County Map Office
4/29/2026 Rg