

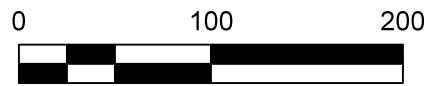
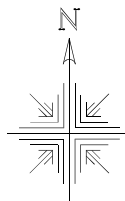
**Walnut Creek Township**  
**N.W. Qtr. Section 16**  
**T-9 N; R-4 W**  
**Holmes County, Ohio**

SURVEYED FOR: Andrew Coblentz

**REFERENCES:**  
 Deeds as shown

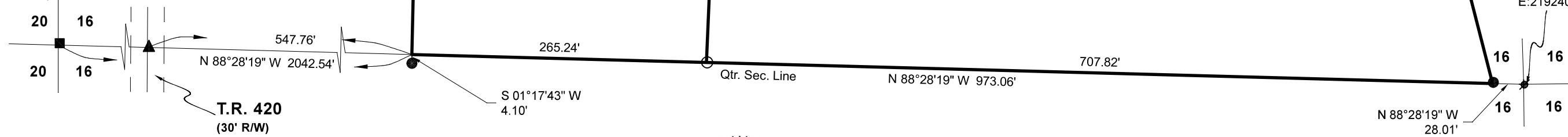
- Plat Vol. 19 Page 3472
- Plat Vol. 09 Page 118
- Plat Vol. 08 Page 542
- Plat Vol. 08 Page 606
- Plat Vol. 08 Page 707
- Plat Vol. 19 Page 4657
- Plat Vol. 16 Page 815
- Plat Vol. 18 Page 394
- Plat Vol. 19 Page 1479

Basis of Bearing are from Grid North, Ohio State Plane Coordinate System, North Zone, NAD 83 (2011). All distances shown hereon are ground distances. To obtain grid distance multiply the distances by a scale factor of 0.99938827.



Scale 1"=100'

T-9 N, R-4 W  
 T-9 N, R-5 W



**MASTER PLAT: The Purpose of this survey.**

Action 1.) Convey 5.000 acres.

Action 2.) Convey 8.857 acres.

- ⊗ Pipe Found
- ▲ RR Spk. Found
- 5/8" Rebar Found unless noted
- Stone Found
- 5/8" Capped Pin Set "Galbraith-8703"
- Point

John H. Hershberger  
 Esta M. Hershberger  
 O.R. Vol. 276 Page 5341

Jonathon J. Miller  
 Mabel O. Miller  
 O.R. Vol. 295 Page 5942

Walnut Valley School  
 (Amish Parochial School)  
 O.R. Vol. 13 Page 728

Michael L. Yoder  
 Cindy B. Yoder  
 O.R. Vol. 286 Page 1858

**5.000 Acres**

**8.857 Acres**

Andrew R. Coblentz  
 Mary Ellen Coblentz  
 O.R. Vol. 195 Page 478  
 PPN 2601287000

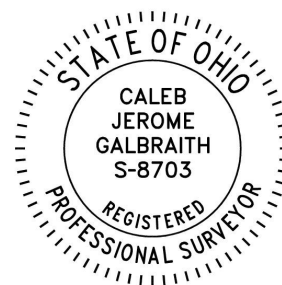
Julia M. Troyer  
 O.R. Vol. 113 Page 312

John Christian Chupp  
 Rhoda A. Chupp  
 O.R. Vol. 284 Page 5817

N:319183.66  
 E:2192401.68

I certify this survey to be correct to the best of my knowledge.

Caleb Jerome Galbraith P.S. 8703  
 Date: April 15, 2026  
 Job ID: 9126



APPROVED FOR TRANSFER ONLY

NO SUBDIVISION PLAT REQUIRED

(O.R.C. 711.001 & 711.131)

Lot(s) not for building unless approved by Board of Health

HOLMES CO. PLANNING COMMISSION

By AO Date 5/27/2026



**Plat Approved**

Holmes County Map Office

5/27/2026 MM

202600002487

B: 19 P: 5841

FILED FOR RECORD IN

HOLMES COUNTY, OH

ANITA HALL, COUNTY RECORDER

06/04/2026 12:42 PM

SMALL PLAT . 40.00

PAGES: 1

ORV 296 Pg 1841

ORV 296 Pg 1844

