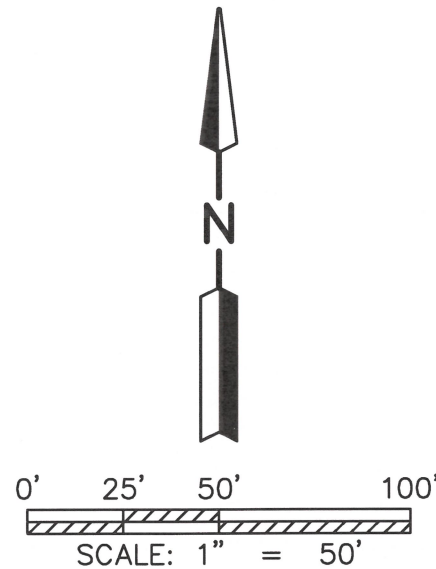


MAP OF SURVEY

NE QUARTER OF SECTION 5
T-19-N; R-15-W
WASHINGTON TOWNSHIP
HOLMES COUNTY, OHIO



- LEGEND —
- STONE FOUND
 - 5/8" IRON PIPE FOUND (UNLESS NOTED)
 - ▲ RAILROAD SPIKE FOUND
 - 5/8" REBAR SET WITH I.D. CAP MARKED "LINGENFELTER 8499"

REFERENCE SURVEY:
PLAT V-19, P-3755, PLAT V-19, P-4126

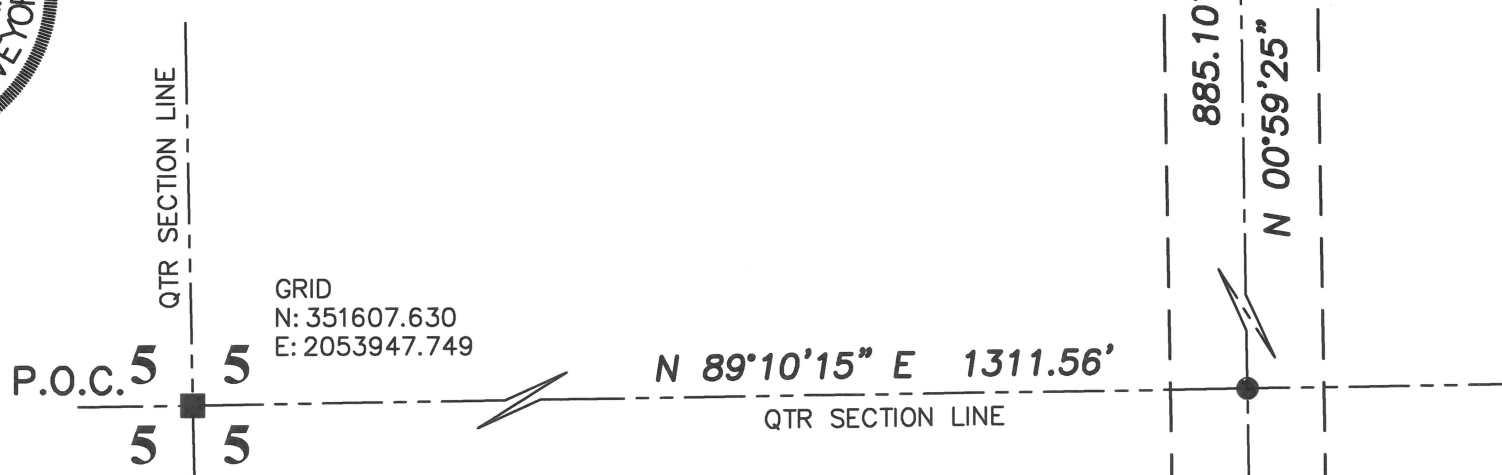
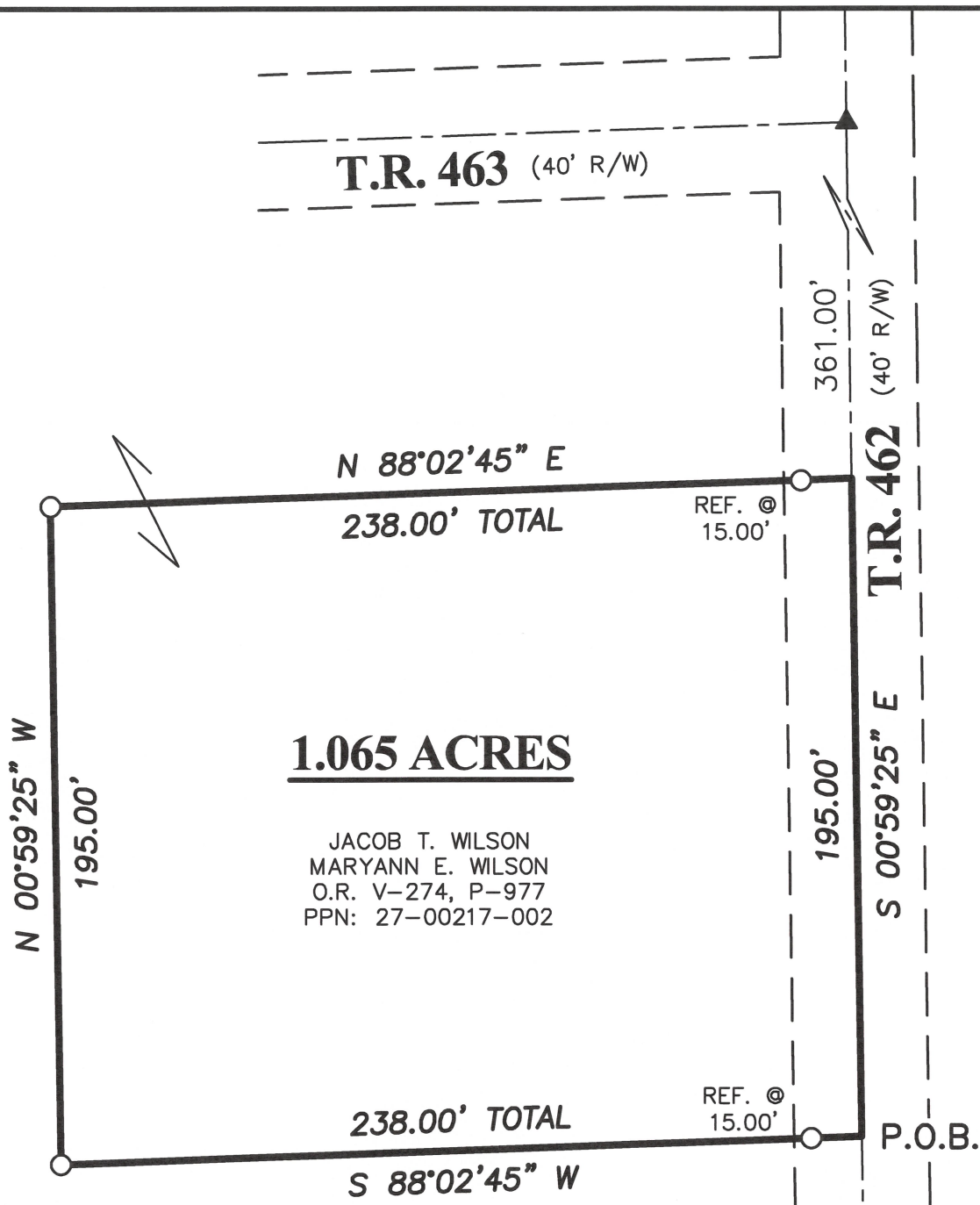
BASIS OF BEARING:
THE BEARINGS AS SHOWN HEREON ARE
RELATIVE TO GRID NORTH OF THE OHIO
STATE PLANE COORDINATE SYSTEM, NAD
(2011) 83 DATUM



Distances shown hereon are expressed in feet and decimal parts thereof, bearings are used to express angles only, iron pins or monuments were found or set as indicated hereon. All of which I believe to be correct to the best of my knowledge.

By: Jason J. Lingenfelter 1-29-2026
JASON J. LINGENFELTER, P.S. #8499 DATE
JOB #26-002

LINGENFELTER SURVEYING
PROFESSIONAL LAND SURVEYING (330)-231-3957



202600002447
B: 19 P: 5840
FILED FOR RECORD IN
HOLMES COUNTY, OH
ANITA HALL, COUNTY RECORDER
06/02/2026 10:29 AM
SMALL PLAT . 40.00
PAGES: 1
ORV 296 Pg 1663

APPROVED FOR TRANSFER ONLY
NO SUBDIVISION PLAT REQUIRED
(O.R.C. 711.001 & 711.131)
Lot(s) not for building unless
approved by Board of Health
HOLMES CO. PLANNING COMMISSION
By TS Date 6/1/2026



Plat Approved
Holmes County Map Office
5/21/2026 MM