

SCALE: 1"=200'

- STONE FOUND
- 5/8" REBAR FOUND  
UNLESS OTHERWISE NOTED
- 5/8" REBAR SET WITH I.D. CAP
- I.D. CAP MARKED "BAKER SURVEYING LLC"

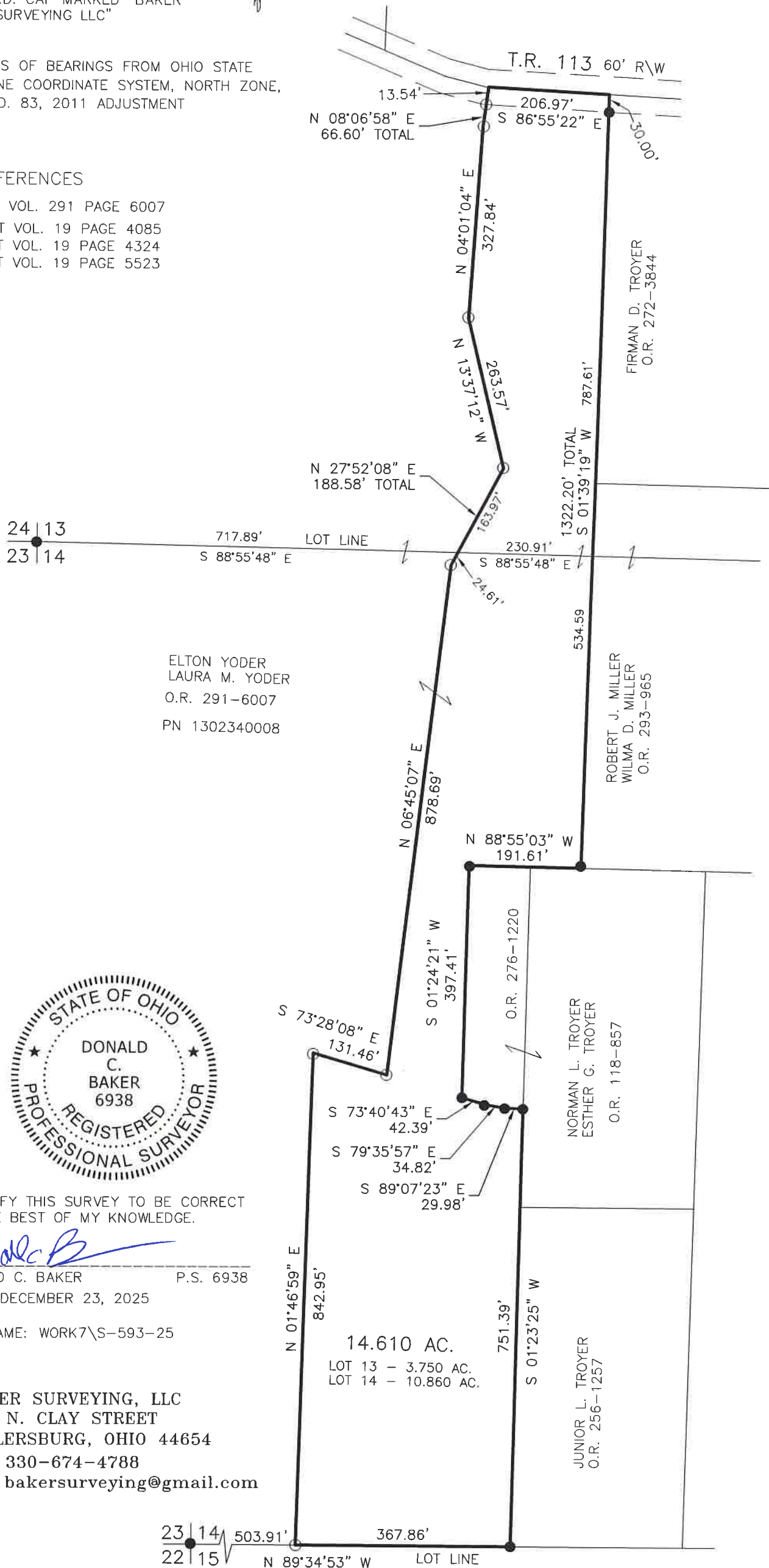
BASIS OF BEARINGS FROM OHIO STATE  
PLANE COORDINATE SYSTEM, NORTH ZONE,  
N.A.D. 83, 2011 ADJUSTMENT

REFERENCES

- O.R. VOL. 291 PAGE 6007
- PLAT VOL. 19 PAGE 4085
- PLAT VOL. 19 PAGE 4324
- PLAT VOL. 19 PAGE 5523

MECHANIC TOWNSHIP  
3RD. QTR., LOTS 13 & 14  
T-8 N; R-6 W  
HOLMES COUNTY, OHIO

SURVEYED FOR: ELTON YODER



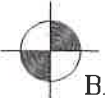
ELTON YODER  
LAURA M. YODER  
O.R. 291-6007  
PN 1302340008



I CERTIFY THIS SURVEY TO BE CORRECT  
TO THE BEST OF MY KNOWLEDGE.

*Donald C. Baker*

DONALD C. BAKER P.S. 6938  
DATE: DECEMBER 23, 2025  
TAB  
FILE NAME: WORK7\S-593-25



BAKER SURVEYING, LLC  
138 N. CLAY STREET  
MILLERSBURG, OHIO 44654  
PH. 330-674-4788  
EMAIL: bakersurveying@gmail.com

APPROVED FOR TRANSFER ONLY  
NO SUBDIVISION PLAT REQUIRED  
(O.R.C. 711.001 & 711.131)  
Lot(s) not for building unless  
approved by Board of Health  
HOLMES CO. PLANNING COMMISSION  
By AO Date 3/17/2026



**Plat Approved**  
Holmes County Map Office  
3/16/2026 Rg