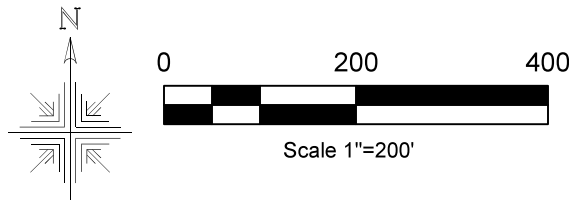


**Clark Township
N.E. Qtr. Sec. 6
T-8 N, R-5 W
Holmes County, Ohio**

SURVEYED FOR: Jonas Yoder

- REFERENCES:**
- Stone Found
 - ⊙ 3/4" Rebar Found
 - ⊙ 5/8" Capped Pin Found "Baker"
 - ⊙ 5/8" Capped Pin Found "Galbraith"
 - 5/8" Rebar Found
 - 5/8" Capped Pin Set "Galbraith-8703"
 - Point
- Deeds as shown
- Plat Vol. 12 Page 774
Plat Vol. 16 Page 756
Plat Vol. 12 Page 614
Plat Vol. 16 Page 769
Plat Vol. 19 Page 5411
Plat Vol. 19 Page 963
Plat Vol. 19 Page 2647
Plat Vol. 16 Page 897
Plat Vol. 8 Page 643

Basis of Bearing: Grid North, Ohio State Plane
Coordinate System Ohio North Zone, NAD 83.
Distances shown hereon are ground distances.
To obtain grid distances multiply by a scale factor
of 0.99993687.



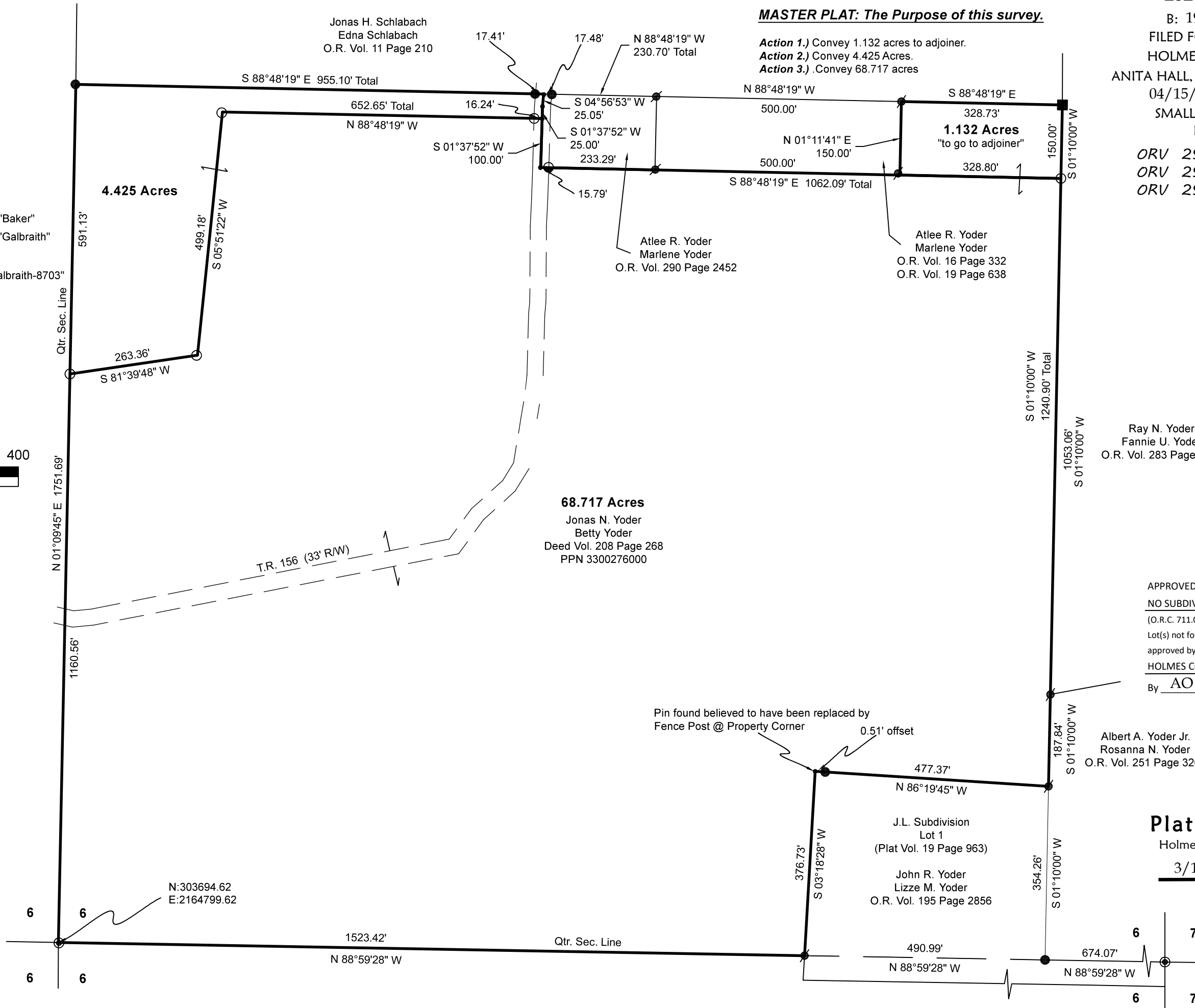
I certify this survey to be correct to the best of my knowledge.

Caleb Galbraith

Caleb Jerome Galbraith P.S. 8703
Date: Jan 27, 2026
Job ID: 27625

Pioneer Surveying & Services, LLC.
5434 Township Road 377
Millerburg, Ohio 44654
Phone: 330-231-0497

Email: caleb@pioneersurveyingandservices.com



MASTER PLAT: The Purpose of this survey.

- Action 1.)** Convey 1.132 acres to adjoiner.
- Action 2.)** Convey 4.425 Acres.
- Action 3.)** Convey 68.717 acres

202600001611
B: 19 P: 5803
FILED FOR RECORD IN
HOLMES COUNTY, OH
ANITA HALL, COUNTY RECORDER
04/15/2026 10:20 AM
SMALL PLAT . 40.00
PAGES: 1

ORV 295 Pg 4613
ORV 295 Pg 4616
ORV 295 Pg 4619

Ray N. Yoder
Fannie U. Yoder
O.R. Vol. 283 Page 6492

APPROVED FOR TRANSFER ONLY
NO SUBDIVISION PLAT REQUIRED
(O.R.C. 711.001 & 711.131)
Lot(s) not for building unless
approved by Board of Health
HOLMES CO. PLANNING COMMISSION
By AO Date 4/6/2026



Albert A. Yoder Jr.
Rosanna N. Yoder
O.R. Vol. 251 Page 3263

Plat Approved
Holmes County Map Office
3/18/2026 Rg