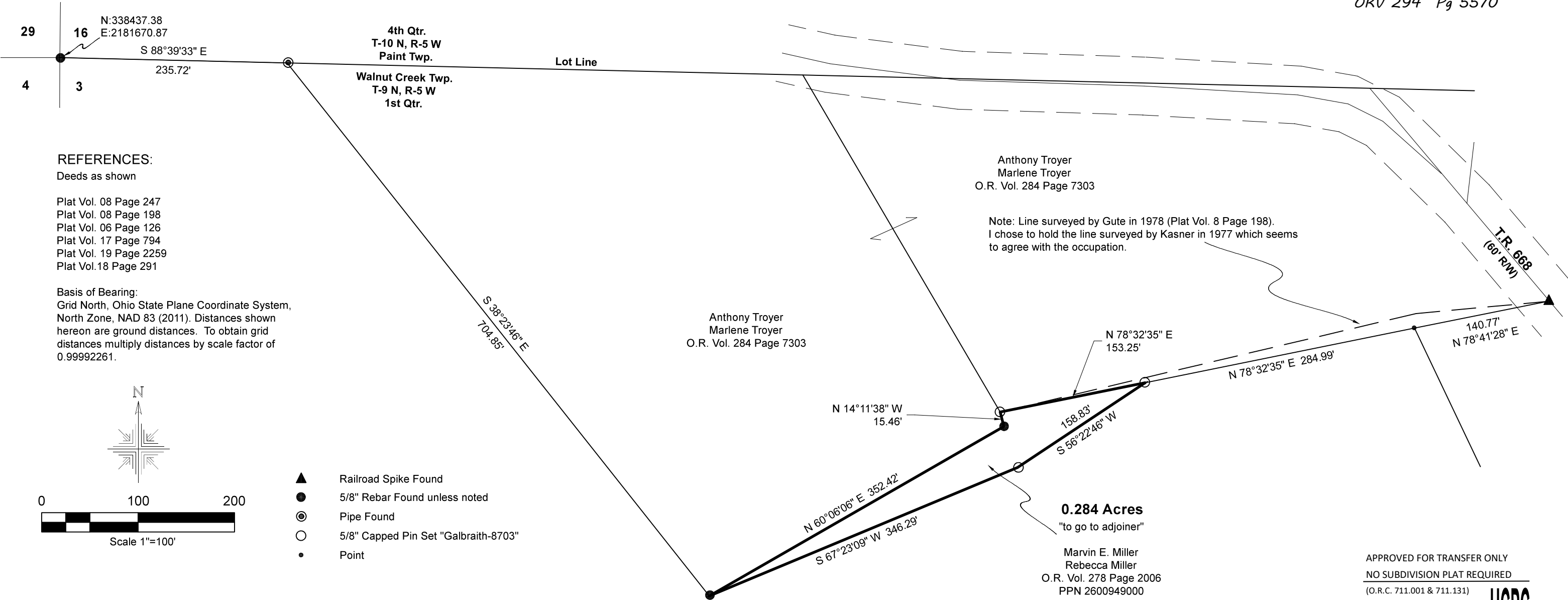


Walnut Creek Township  
1st Qtr. Lot 3  
T-9 N; R-5 W  
Holmes County, Ohio

SURVEYED FOR: Tony Troyer

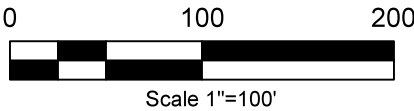
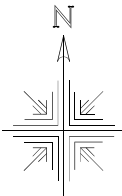
202600000377  
B: 19 P: 5754  
FILED FOR RECORD IN  
HOLMES COUNTY, OH  
ANITA HALL, COUNTY RECORDER  
01/27/2026 09:29 AM  
SMALL PLAT . 40.00  
PAGES: 1  
ORV 294 Pg 5570



REFERENCES:  
Deeds as shown

Plat Vol. 08 Page 247  
Plat Vol. 08 Page 198  
Plat Vol. 06 Page 126  
Plat Vol. 17 Page 794  
Plat Vol. 19 Page 2259  
Plat Vol. 18 Page 291

Basis of Bearing:  
Grid North, Ohio State Plane Coordinate System,  
North Zone, NAD 83 (2011). Distances shown  
hereon are ground distances. To obtain grid  
distances multiply distances by scale factor of  
0.99992261.



- ▲ Railroad Spike Found
- 5/8" Rebar Found unless noted
- ◎ Pipe Found
- 5/8" Capped Pin Set "Galbraith-8703"
- Point

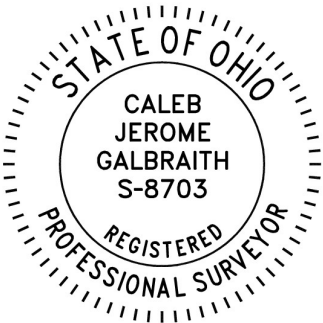
Pioneer Surveying & Services, LLC.  
5434 Township Road 377  
Millersburg, Ohio 44654  
Phone: 330-231-0497  
Email: caleb@pioneersurveyingandservices.com



I certify this survey to be correct to the best of  
my knowledge.

*Caleb Galbraith*

Caleb Jerome Galbraith P.S. 8703  
Date: August 4, 2025  
Job ID: 12825



APPROVED FOR TRANSFER ONLY  
NO SUBDIVISION PLAT REQUIRED  
(O.R.C. 711.001 & 711.131)  
Lot(s) not for building unless  
approved by Board of Health  
HOLMES CO. PLANNING COMMISSION  
By AO Date 12/11/2025



Plat Approved  
Holmes County Map Office  
12/11/2025 MM