

202500001234

B: 19 P: 5516

FILED FOR RECORD IN
HOLMES COUNTY, OH

ANITA HALL, COUNTY RECORDER

04/02/2025 12:02 PM

SMALL PLAT . 40.00

PAGES: 1

ORV 291 Pg 5597

ORV 291 Pg 5601

ORV 291 Pg 5603

0 200 400



SCALE: 1"=200'

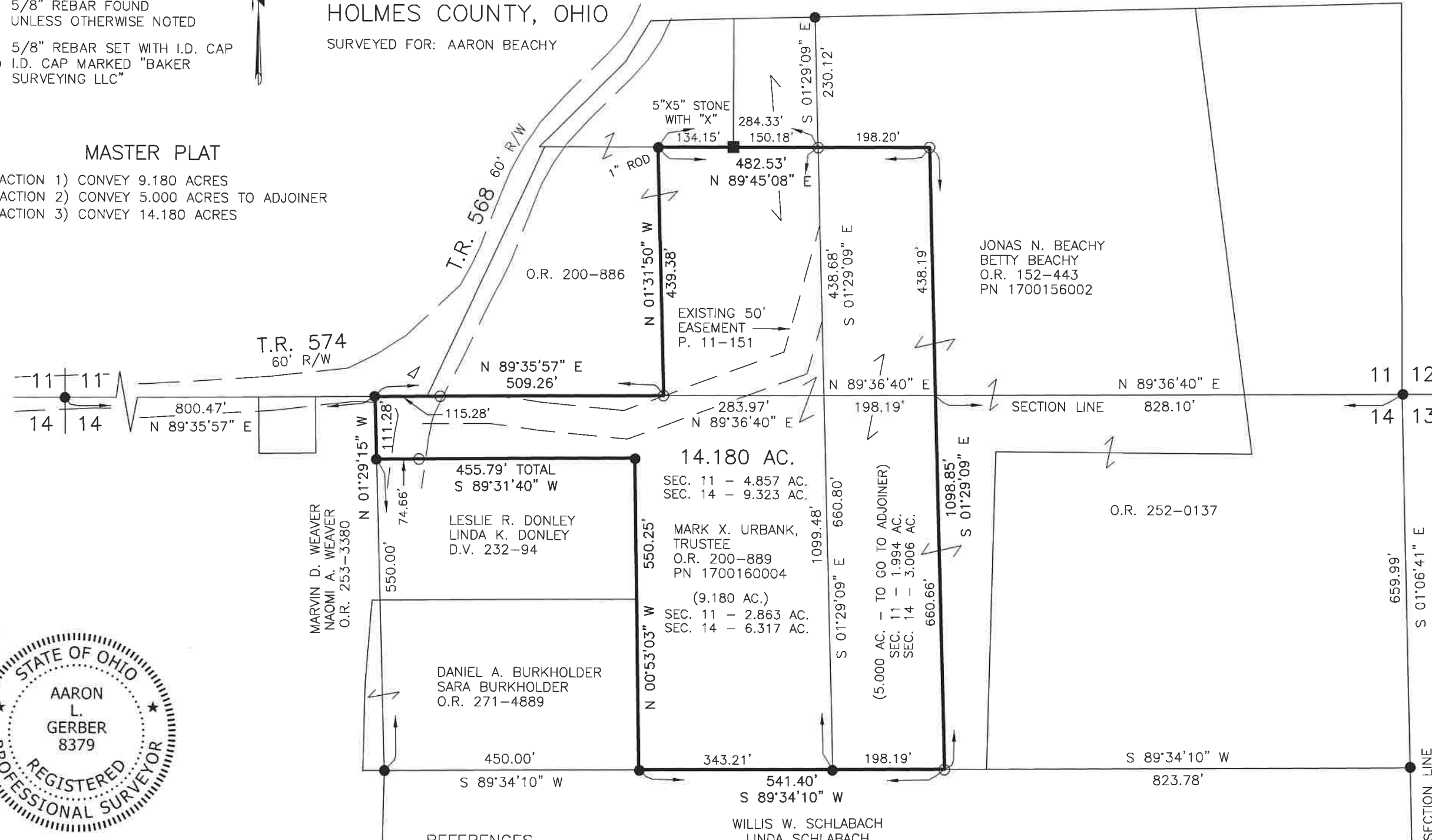
- STONE FOUND
- 5/8" REBAR FOUND
UNLESS OTHERWISE NOTED
- 5/8" REBAR SET WITH I.D. CAP
- I.D. CAP MARKED "BAKER
SURVEYING LLC"

PRAIRIE TOWNSHIP
S.E. QTR. SECTION 11
N.E. QTR. FRACTIONAL SECTION 14
T-13 N; R-13 W
HOLMES COUNTY, OHIO

SURVEYED FOR: AARON BEACHY

MASTER PLAT

- ACTION 1) CONVEY 9.180 ACRES
- ACTION 2) CONVEY 5.000 ACRES TO ADJOINER
- ACTION 3) CONVEY 14.180 ACRES



I CERTIFY THIS SURVEY TO BE CORRECT TO THE BEST OF MY KNOWLEDGE.

AL
 AARON L. GERBER P.S. 8379
 DATE: JAN. 31, 2025
 ALG\KES
 FILE NAME: WORK7\S--45-25\CNK

REFERENCES

- DEED VOL. 232 PAGE 94
- O.R. VOL. 200 PAGE 889
- O.R. VOL. 152 PAGE 443
- PLAT VOL. 10 PAGE 607
- PLAT VOL. 11 PAGE 151
- PLAT VOL. 14 PAGE 82
- PLAT VOL. 19 PAGE 126

BASIS OF BEARINGS FROM OHIO STATE
 PLANE COORDINATE SYSTEM, NORTH ZONE,
 N.A.D. 83, 2011 ADJUSTMENT



BAKER SURVEYING, LLC
 138 N. CLAY STREET
 MILLERSBURG, OHIO 44654
 PH. 330-674-4788
 EMAIL: bakersurveying@gmail.com

APPROVED FOR TRANSFER ONLY
 NO SUBDIVISION PLAT REQUIRED
 (O.R.C. 711.001 & 711.131)
 Lot(s) not for building unless
 approved by Board of Health
 HOLMES CO. PLANNING COMMISSION
 By AO Date 3/19/2025



Plat Approved
 Holmes County Map Office
3/18/2025 Rg