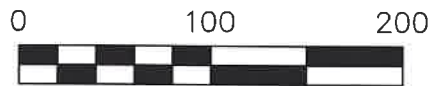


KILLBUCK TOWNSHIP
 N.W. QTR. SECTION 15
 T-8 N; R-7 W
 HOLMES COUNTY, OHIO

SURVEYED FOR:
 THE HIGHLANDS NATURE
 SANCTUARY, INC.



SCALE: 1"=100'

● 5/8" REBAR FOUND
 UNLESS OTHERWISE NOTED

REFERENCES

- DEED VOL. 274 PAGE 372
- PLAT VOL. 1 PAGE 351
- PLAT VOL. 12 PAGE 383
- PLAT VOL. 16 PAGE 547
- PLAT VOL. 11 PAGE 47
- PLAT VOL. 19 PAGE 2709
- PLAT VOL. 19 PAGE 2864
- PLAT VOL. 2 PAGE 489
- PLAT VOL. 19 PAGE 1151

BASIS OF BEARINGS FROM
 OHIO STATE PLANE COORDINATE
 SYSTEM, NORTH ZONE, N.A.D. 83,
 2011 ADJUSTMENT

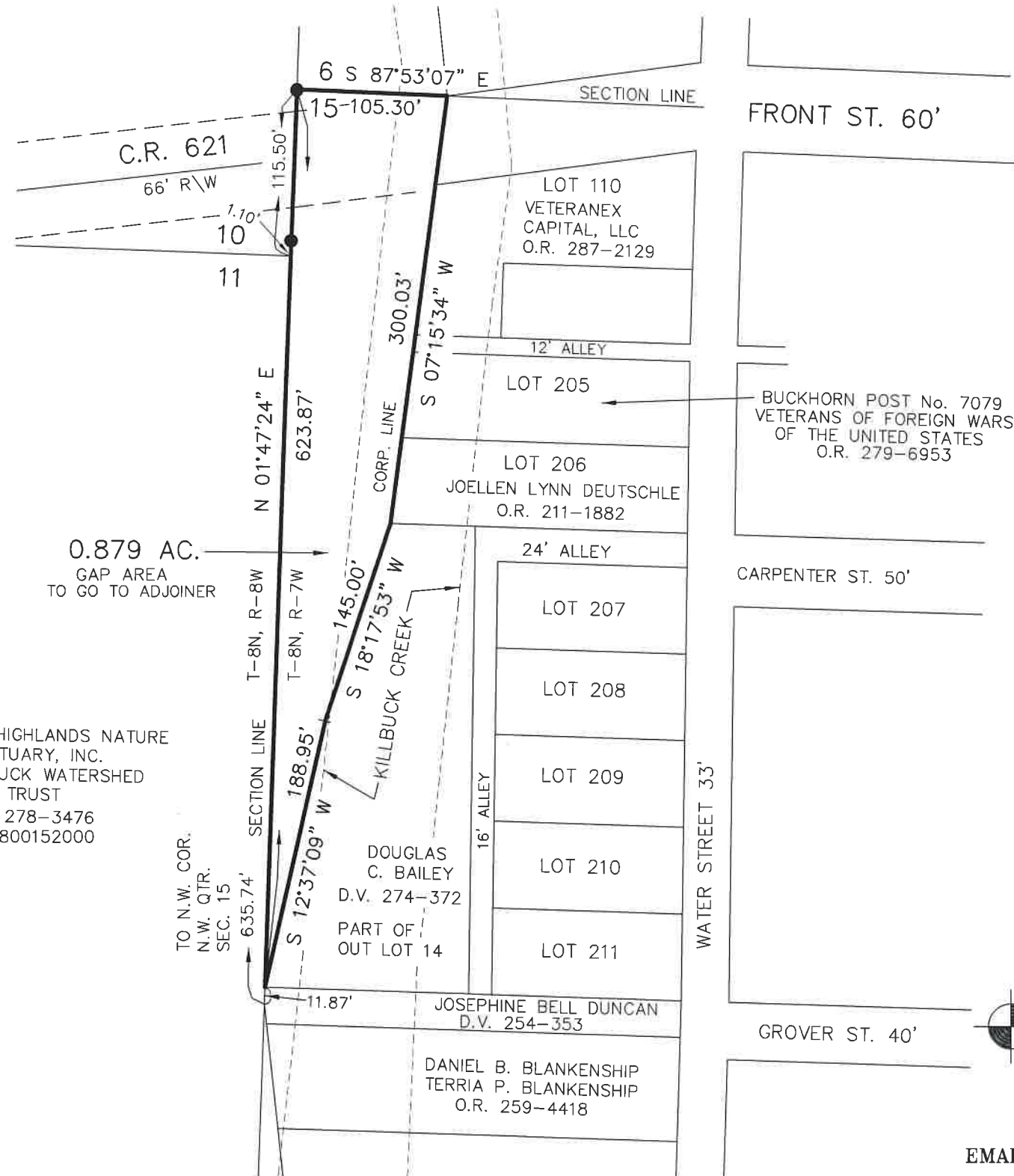


I CERTIFY THIS SURVEY TO BE CORRECT
 TO THE BEST OF MY KNOWLEDGE.

Donald C. Baker

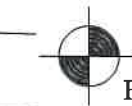
DONALD C. BAKER P.S. 6938
 DATE: JULY 8, 2022
 REVISED: MARCH 14, 2025
 TAB\FDB
 FILE NAME: WORK6\S-72-22

THE HIGHLANDS NATURE
 SANCTUARY, INC.
 KILLBUCK WATERSHED
 LAND TRUST
 O.R. 278-3476
 PN 0800152000



202500001211
 B: 19 P: 5515
 FILED FOR RECORD IN
 HOLMES COUNTY, OH
 ANITA HALL, COUNTY RECORDER
 04/01/2025 11:07 AM
 SMALL PLAT . 40.00
 PAGES: 1
 ORV 291 Pg 5451

APPROVED FOR TRANSFER ONLY
 NO SUBDIVISION PLAT REQUIRED
 (O.R.C. 711.001 & 711.131)
 Lot(s) not for building unless
 approved by Board of Health
 HOLMES CO. PLANNING COMMISSION
 By TS Date 4/1/2025



BAKER SURVEYING, LLC
 138 N. CLAY STREET
 MILLERSBURG, OHIO 44654
 PH. 330-674-4788
 EMAIL: bakersurveying@gmail.com

Plat Approved
 Holmes County Map Office
 3/25/2025 Rg