

Prairie Township
S.W. Qtr. Sec. 27
T-14 N; R-13 W
Holmes County, Ohio

SURVEYED FOR: Vernon Yoder

MASTER PLAT: The Purpose of this survey.

- Action 1.) Convey 0.281 acres.
- Action 2.) Convey 5.515 acres.

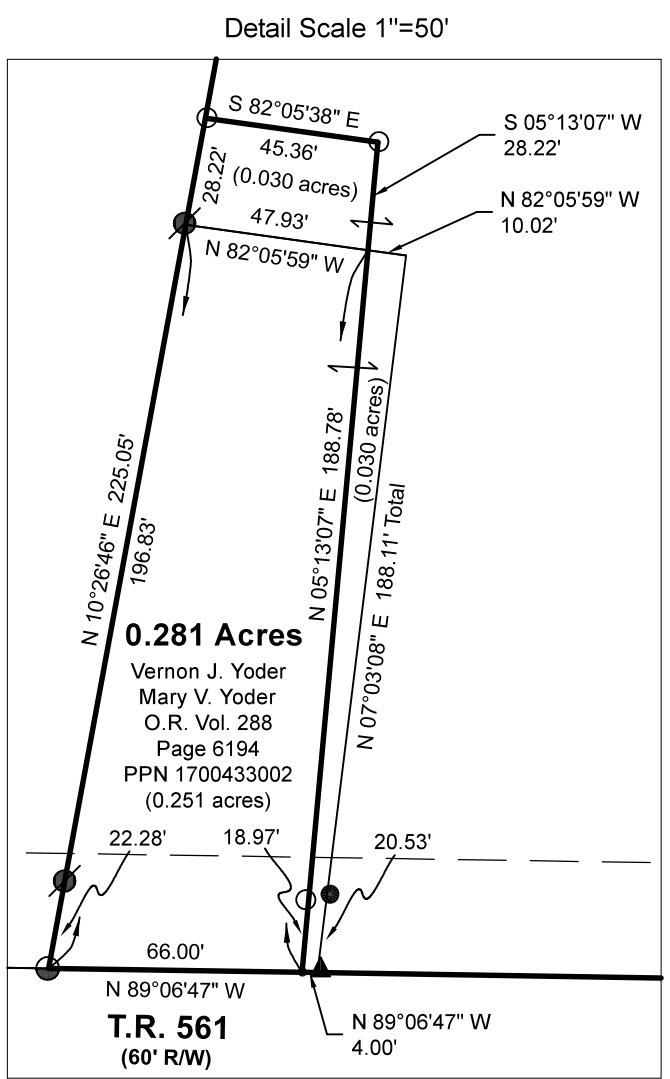
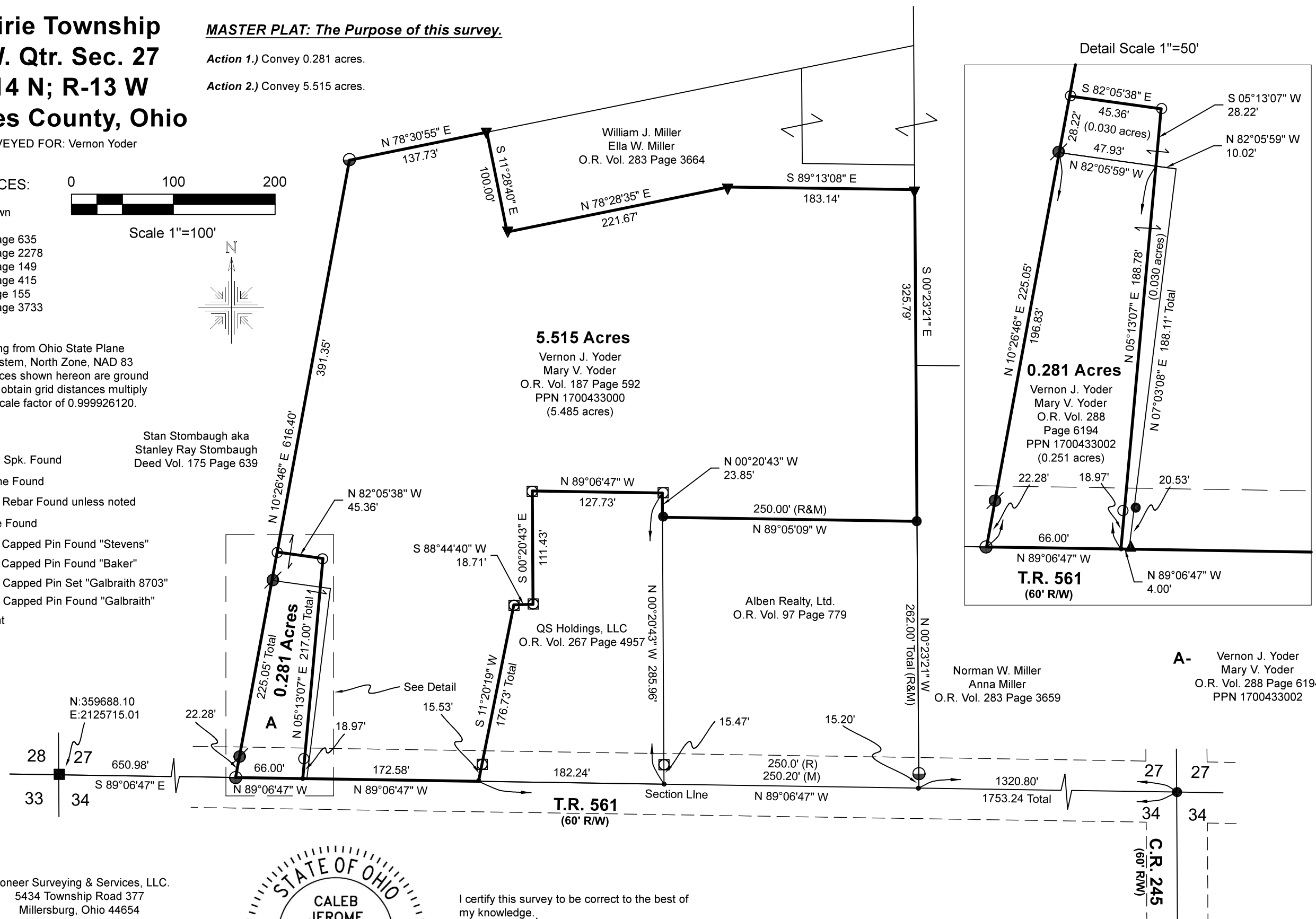


- Plat Vol. 19 Page 635
- Plat Vol. 19 Page 2278
- Plat Vol. 5 Page 149
- Plat Vol. 12 Page 415
- Plat Vol. 4 Page 155
- Plat Vol. 19 Page 3733

Basis of Bearing from Ohio State Plane
 Coordinate System, North Zone, NAD 83
 (2011). Distances shown hereon are ground
 distances. To obtain grid distances multiply
 distances by scale factor of 0.999926120.

- ▲ R.R. Spk. Found
- Stone Found
- 5/8" Rebar Found unless noted
- Pipe Found
- ▼ 5/8" Capped Pin Found "Stevens"
- ⊗ 5/8" Capped Pin Found "Baker"
- 5/8" Capped Pin Set "Galbraith 8703"
- 5/8" Capped Pin Found "Galbraith"
- Point

Stan Stombaugh aka
 Stanley Ray Stombaugh
 Deed Vol. 175 Page 639



202500001128
 B: 19 P: 5513
 FILED FOR RECORD IN
 HOLMES COUNTY, OH
 ANITA HALL, COUNTY RECORDER
 03/26/2025 02:32 PM
 SMALL PLAT . 40.00
 PAGES: 1
 ORV 291 Pg 5068
 ORV 291 Pg 5072

Pioneer Surveying & Services, LLC.
 5434 Township Road 377
 Millersburg, Ohio 44654
 Phone: 330-231-0497
 Email: caleb@pioneersurveyingandservices.com



I certify this survey to be correct to the best of
 my knowledge.

Caleb Galbraith

Caleb Jerome Galbraith P.S. 8703
 Date: November 22, 2024
 Job ID: 16524

APPROVED FOR TRANSFER ONLY
 NO SUBDIVISION PLAT REQUIRED
 (O.R.C. 711.001 & 711.131)
 Lot(s) not for building unless
 approved by Board of Health
 HOLMES CO. PLANNING COMMISSION
 By AO Date 2/25/2025



Plat Approved
 Holmes County Map Office
 2/26/2025 MM