

202500001003

B: 19 P: 5508

FILED FOR RECORD IN
HOLMES COUNTY, OH

ANITA HALL, COUNTY RECORDER

03/17/2025 11:10 AM

SMALL PLAT . 40.00

PAGES: 1

ORV 291 Pg 4517

ORV 291 Pg 4521

PAINT TOWNSHIP
S.W. QTR. SECTION 32
T-15 N; R-11 W
HOLMES COUNTY, OHIO

SURVEYED FOR: WES HERSHBERGER

0 200 400



SCALE: 1"=200'

- 5/8" REBAR FOUND UNLESS OTHERWISE NOTED
- 5/8" REBAR SET WITH I.D. CAP I.D. CAP MARKED "BAKER 6938"

MASTER PLAT

ACTION 1) CONVEY 6.190 ACRES
ACTION 2) CONVEY 29.029 ACRES

REFERENCES

DEED VOL. 224 PAGE 457
O.R. VOL. 58 PAGE 133
O.R. VOL. 187 PAGE 2260
O.R. VOL. 121 PAGE 928
O.R. VOL. 253 PAGE 4713
PLAT VOL. 18 PAGE 925
PLAT VOL. 19 PAGE 2814

BASIS OF BEARINGS FROM
OHIO STATE PLANE COORDINATE
SYSTEM, NORTH ZONE, N.A.D. 83
(2011 ADJUSTMENT)



I CERTIFY THIS SURVEY TO BE CORRECT TO THE BEST OF MY KNOWLEDGE.

Donald C. Baker

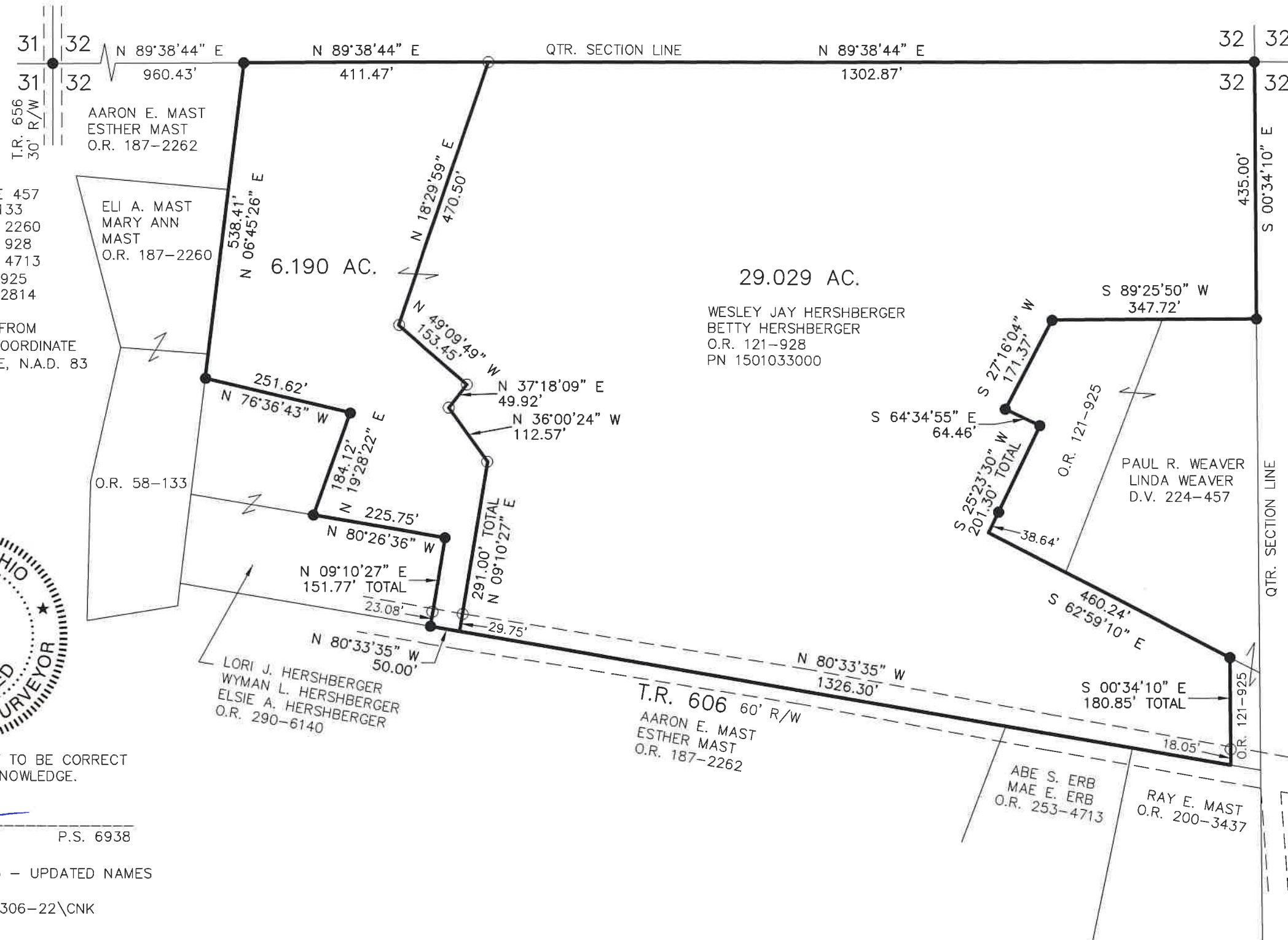
DONALD C. BAKER P.S. 6938

DATE: JUNE 22, 2022

REVISED: JAN. 8, 2025 - UPDATED NAMES

TAB\GRB

FILE NAME: WORK6\S-306-22\CNK



APPROVED FOR TRANSFER ONLY

NO SUBDIVISION PLAT REQUIRED

(O.R.C. 711.001 & 711.131)

Lot(s) not for building unless

approved by Board of Health

HOLMES CO. PLANNING COMMISSION

By AO Date 2/19/2025

Plat Approved

Holmes County Map Office

2/18/2025 MM



BAKER SURVEYING, LLC
138 N. CLAY STREET
MILLERSBURG, OHIO 44654
PH. 330-674-4788
EMAIL: bakersurveying@gmail.com