

SCALE: 1"=200'

- 5/8" REBAR FOUND UNLESS OTHERWISE NOTED
- 5/8" REBAR SET WITH I.D. CAP
- I.D. CAP MARKED "BAKER SURVEYING LLC"

REFERENCES

- O.R. VOL. 168 PAGE 2113
- O.R. VOL. 200 PAGE 886
- O.R. VOL. 248 PAGE 6111
- PLAT VOL. 18 PAGE 829
- PLAT VOL. 19 PAGE 126
- PLAT VOL. 19 PAGE 2484

BASIS OF BEARINGS FROM OHIO STATE PLANE COORDINATE SYSTEM, NORTH ZONE, N.A.D. 83, 2011 ADJUSTMENT

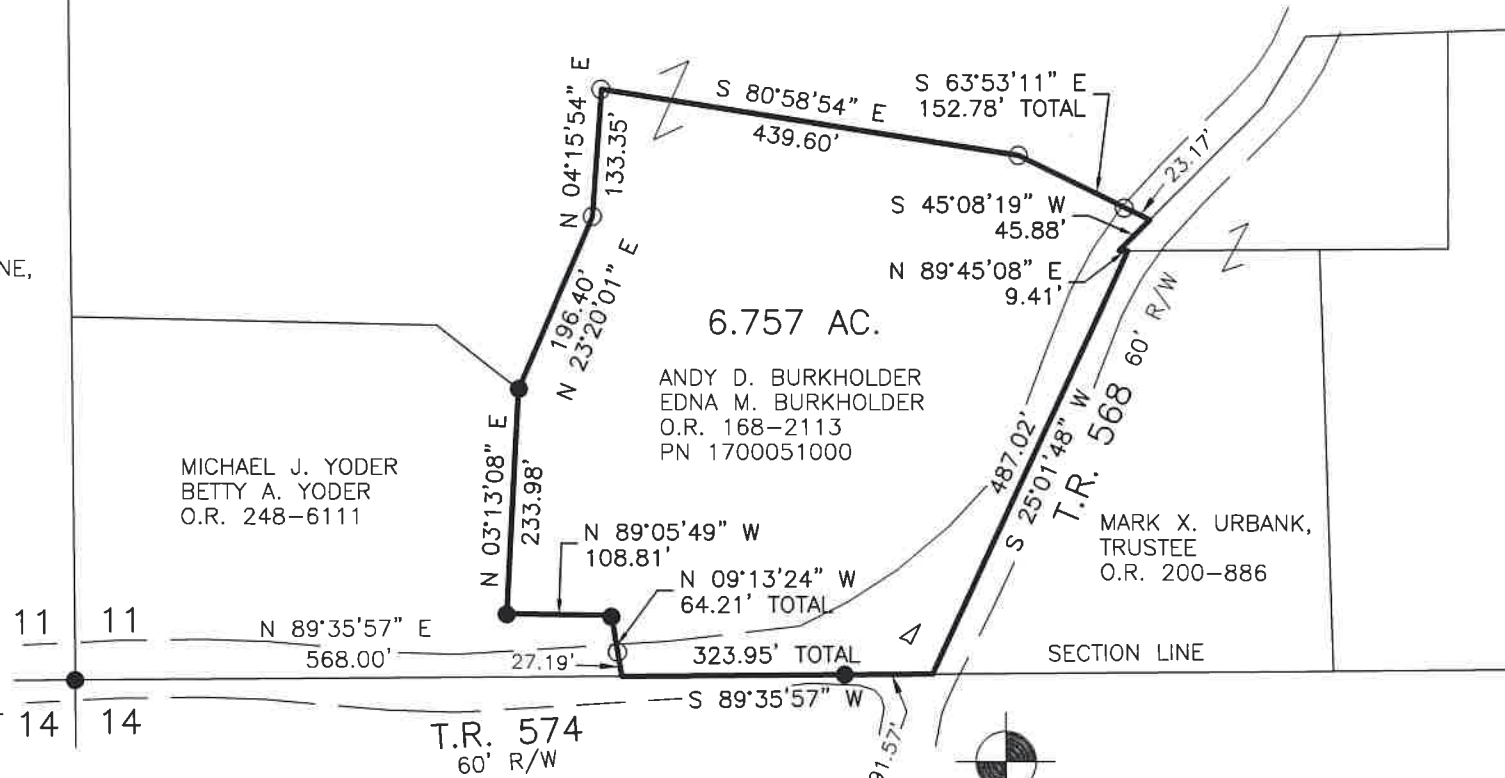


I CERTIFY THIS SURVEY TO BE CORRECT TO THE BEST OF MY KNOWLEDGE.

AL
 AARON L. GERBER P.S. 8379
 DATE: JAN. 8, 2025
 ALG
 FILE NAME: WORK7\S-16-25\CNK

PRAIRIE TOWNSHIP
 S.E. QTR. SECTION 11
 T-13 N; R-13 W
 HOLMES COUNTY, OHIO

SURVEYED FOR: ANDY BURKHOLDER



202500000803

B: 19 P: 5503

FILED FOR RECORD IN
 HOLMES COUNTY, OH
 ANITA HALL, COUNTY RECORDER

02/27/2025 09:27 AM

SMALL PLAT . 40.00

PAGES: 1

ORV 291 Pg 3421

APPROVED FOR TRANSFER ONLY

NO SUBDIVISION PLAT REQUIRED

(O.R.C. 711.001 & 711.131)

Lot(s) not for building unless

approved by Board of Health

HOLMES CO. PLANNING COMMISSION

By AO Date 1/28/2025



BAKER SURVEYING, LLC
 138 N. CLAY STREET
 MILLERSBURG, OHIO 44654
 PH. 330-674-4788
 EMAIL: bakersurveying@gmail.com

Plat Approved

Holmes County Map Office

1/28/2025 Rg