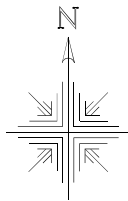


0 300 600



Scale 1"=300'



- Stone Found
- 5/8" Rebar Found unless noted
- 1/2" Pipe Found
- ⊙ 2" Conc. Mon. Found
- ⦿ 5/8" Capped Pin Found "Baker"
- 5/8" Capped Pin Set "Galbraith-8703"
- Point

**REFERENCES:**

Deeds as shown

Surveys by

- Plat Vol. 19 Page 1396
- Plat Vol. 19 Page 3069
- Plat Vol. 17 Page 452
- Plat Vol. 19 Page 3612
- Plat Vol. 10 Page 419
- Plat Vol. 19 Page 3848
- Plat Vol. 19 Page 4511
- Plat Vol. 19 Page 4301
- Plat Vol. 19 Page 4169

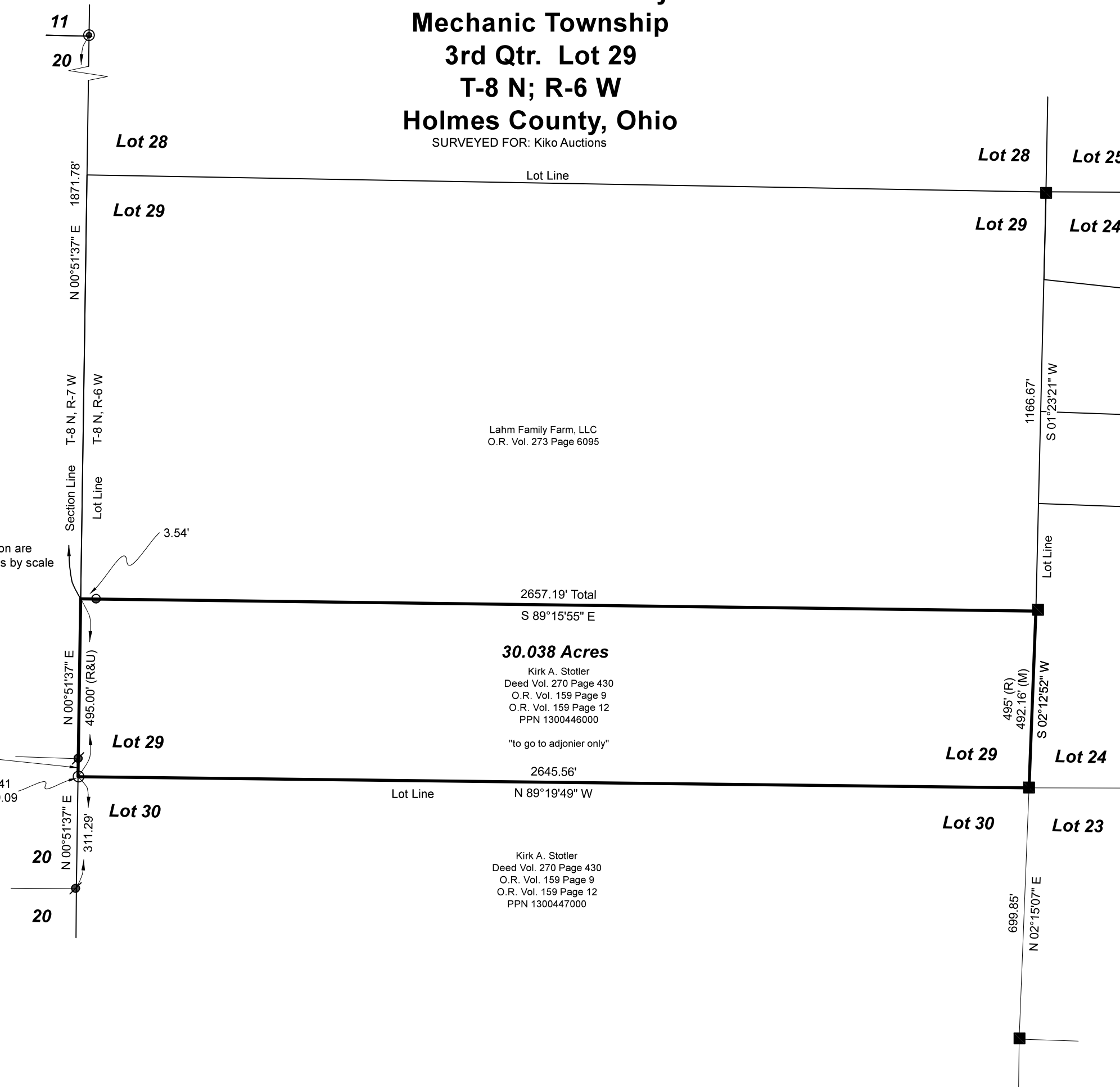
Basis of Bearings from Ohio State Plane Coordinate System, North Zone, NAD 83 (2011). Distances shown hereon are ground distances. To obtain grid distances multiply distances by scale factor of 0.999951473.

**Retracement Survey  
Mechanic Township  
3rd Qtr. Lot 29  
T-8 N; R-6 W  
Holmes County, Ohio**

SURVEYED FOR: Kiko Auctions

202500000798  
B: 19 P: 5502  
FILED FOR RECORD IN  
HOLMES COUNTY, OH  
ANITA HALL, COUNTY RECORDER  
02/26/2025 03:02 PM  
SMALL PLAT . 40.00  
PAGES: 1

ORV 291 Pg 3399



I certify this survey to be correct to the best of my knowledge.

Caleb Jerome Galbraith P.S. 8703  
Date: Jan. 3, 2025  
Job ID: 20224  
Pioneer Surveying & Services, LLC.  
5434 Township Road 377  
Millersburg, Ohio 44654  
Phone: 330-231-0497  
Email: caleb@pioneersurveyingandservices.com



APPROVED FOR TRANSFER ONLY  
NO SUBDIVISION PLAT REQUIRED

(O.R.C. 711.001 & 711.131)

Lot(s) not for building unless approved by Board of Health



HOLMES CO. PLANNING COMMISSION

By AO Date 1/21/2024

**Plat Approved**

Holmes County Map Office

1/17/2025 MM