

HARDY TOWNSHIP
 N.E. QTR. FRACTIONAL SECTION 18
 T-9 N; R-7 W
 HOLMES COUNTY, OHIO

SURVEYED FOR: ROGER COOL

REFERENCES

- DEED VOL. 174 PAGE 561
- O.R. VOL. 260 PAGE 2134
- O.R. VOL. 261 PAGE 3631
- O.R. VOL. 284 PAGE 5112
- PLAT VOL. 10 PAGE 857
- PLAT VOL. 17 PAGE 817
- PLAT VOL. 19 PAGE 217
- PLAT VOL. 19 PAGE 4775

BASIS OF BEARINGS FROM OHIO STATE
 PLANE COORDINATE SYSTEM, NORTH
 ZONE, N.A.D. 83, 2011 ADJUSTMENT

0 200 400

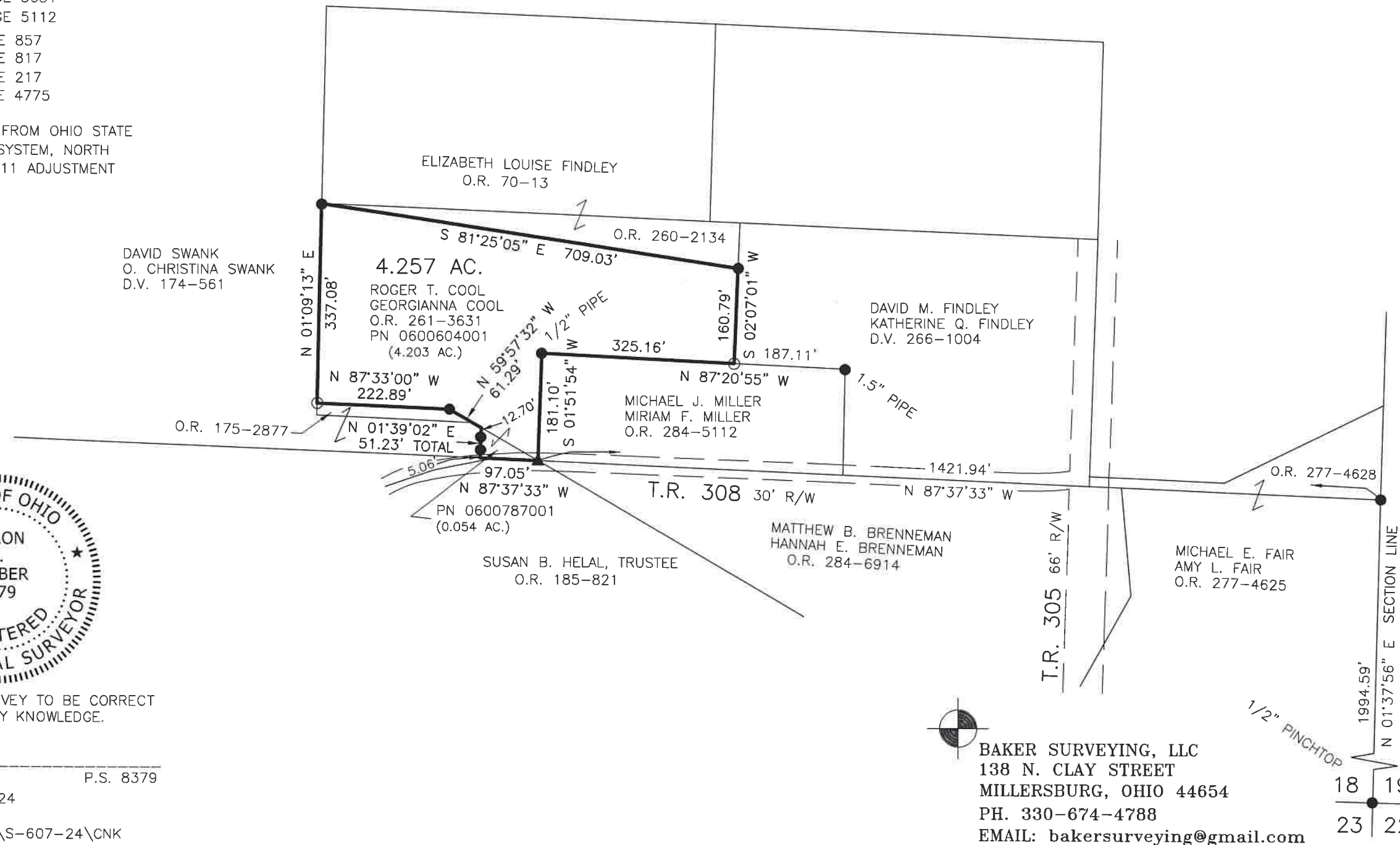


SCALE: 1"=200'

- ▲ R.R. SPIKE FOUND
- 5/8" REBAR FOUND
UNLESS OTHERWISE NOTED
- 5/8" REBAR SET WITH I.D. CAP
I.D. CAP MARKED "BAKER
SURVEYING LLC"



202500000777
 B: 19 P: 5500
 FILED FOR RECORD IN
 HOLMES COUNTY, OH
 ANITA HALL, COUNTY RECORDER
 02/25/2025 02:54 PM
 SMALL PLAT . 40.00
 PAGES: 1
 ORV 291 Pg 3323



I CERTIFY THIS SURVEY TO BE CORRECT
 TO THE BEST OF MY KNOWLEDGE.

ALG
 AARON L. GERBER P.S. 8379
 DATE: DEC. 23, 2024
 TAB\GRB
 FILE NAME: WORK7\S-607-24\CNK

BAKER SURVEYING, LLC
 138 N. CLAY STREET
 MILLERSBURG, OHIO 44654
 PH. 330-674-4788
 EMAIL: bakersurveying@gmail.com

APPROVED FOR TRANSFER ONLY
 NO SUBDIVISION PLAT REQUIRED
 (O.R.C. 711.001 & 711.131)
 Lot(s) not for building unless
 approved by Board of Health
 HOLMES CO. PLANNING COMMISSION
 By AO Date 2/20/2025



Plat Approved
 Holmes County Map Office
 2/19/2025 MM