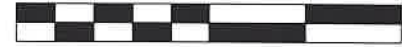


HARDY TOWNSHIP
 S.E. QTR. SECTION 15
 T-9 N; R-6 W
 HOLMES COUNTY, OHIO

SURVEYED FOR: HOLMES COUNTY ENGINEER

0 200 400



SCALE: 1"=200'

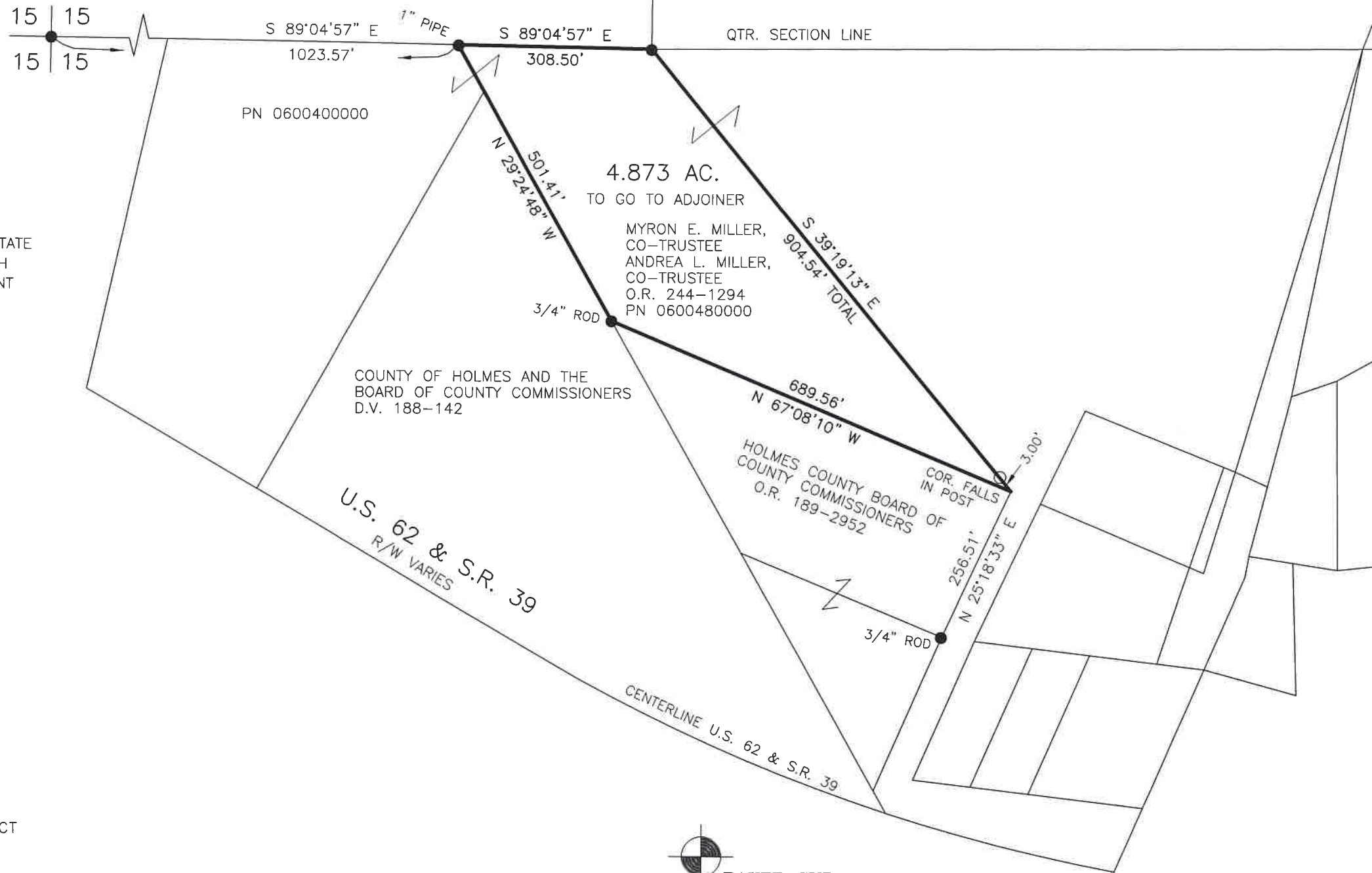
- 5/8" REBAR FOUND UNLESS OTHERWISE NOTED
- 5/8" REBAR SET WITH I.D. CAP
- I.D. CAP MARKED "BAKER SURVEYING LLC"

202500000509
 B: 19 P: 5490
 FILED FOR RECORD IN
 HOLMES COUNTY, OH
 ANITA HALL, COUNTY RECORDER
 02/07/2025 12:08 PM
 CNTY SM PLT . 0.00
 PAGES: 1
 ORV 0291 Pg 2093

REFERENCES

- DEED VOL. 188 PAGE 142
- DEED VOL. 189 PAGE 2952
- O.R. VOL. 244 PAGE 1294
- PLAT VOL. 2 PAGE 312
- PLAT VOL. 16 PAGE 869
- PLAT VOL. 19 PAGE 2275

BASIS OF BEARINGS FROM OHIO STATE
 PLANE COORDINATE SYSTEM, NORTH
 ZONE, N.A.D. 83, 2011 ADJUSTMENT



I CERTIFY THIS SURVEY TO BE CORRECT
 TO THE BEST OF MY KNOWLEDGE.

AL

AARON L. GERBER P.S. 8379

DATE: DEC. 12, 2024

ALG

FILE NAME: WORK7\S-637-24\CNK



BAKER SURVEYING, LLC
 138 N. CLAY STREET
 MILLERSBURG, OHIO 44654
 PH. 330-674-4788
 EMAIL: bakersurveying@gmail.com

APPROVED FOR TRANSFER ONLY
 NO SUBDIVISION PLAT REQUIRED
 (O.R.C. 711.001 & 711.131)
 Lot(s) not for building unless
 approved by Board of Health
 HOLMES CO. PLANNING COMMISSION
 By AO Date 1/31/2025



Plat Approved
 Holmes County Map Office
 1/31/2025 MM