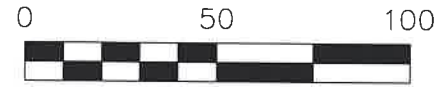


VILLAGE OF HOLMESVILLE
 PART OF LOT 111
 PRAIRIE TOWNSHIP
 S.E. QTR. SECTION 3
 T-13 N; R-13 W
 HOLMES COUNTY, OHIO

SURVEYED FOR: ARLYN HERSHBERGER



SCALE: 1"=50'

● 5/8" REBAR FOUND
 UNLESS OTHERWISE NOTED

○ MAG NAIL SET

○ 5/8" REBAR SET WITH I.D. CAP
 ○ I.D. CAP MARKED "BAKER 6938"

REFERENCES

- O.R. VOL. 87 PAGE 345
- O.R. VOL. 274 PAGE 3644
- O.R. VOL. 289 PAGE 2342
- PLAT VOL. 14 PAGE 872
- PLAT VOL. 16 PAGE 145
- PLAT VOL. 19 PAGE 4212

BASIS OF BEARINGS FROM OHIO STATE PLANE
 COORDINATE SYSTEM, NORTH ZONE,
 N.A.D. 83, 2011 ADJUSTMENT



I CERTIFY THIS SURVEY TO BE CORRECT
 TO THE BEST OF MY KNOWLEDGE.

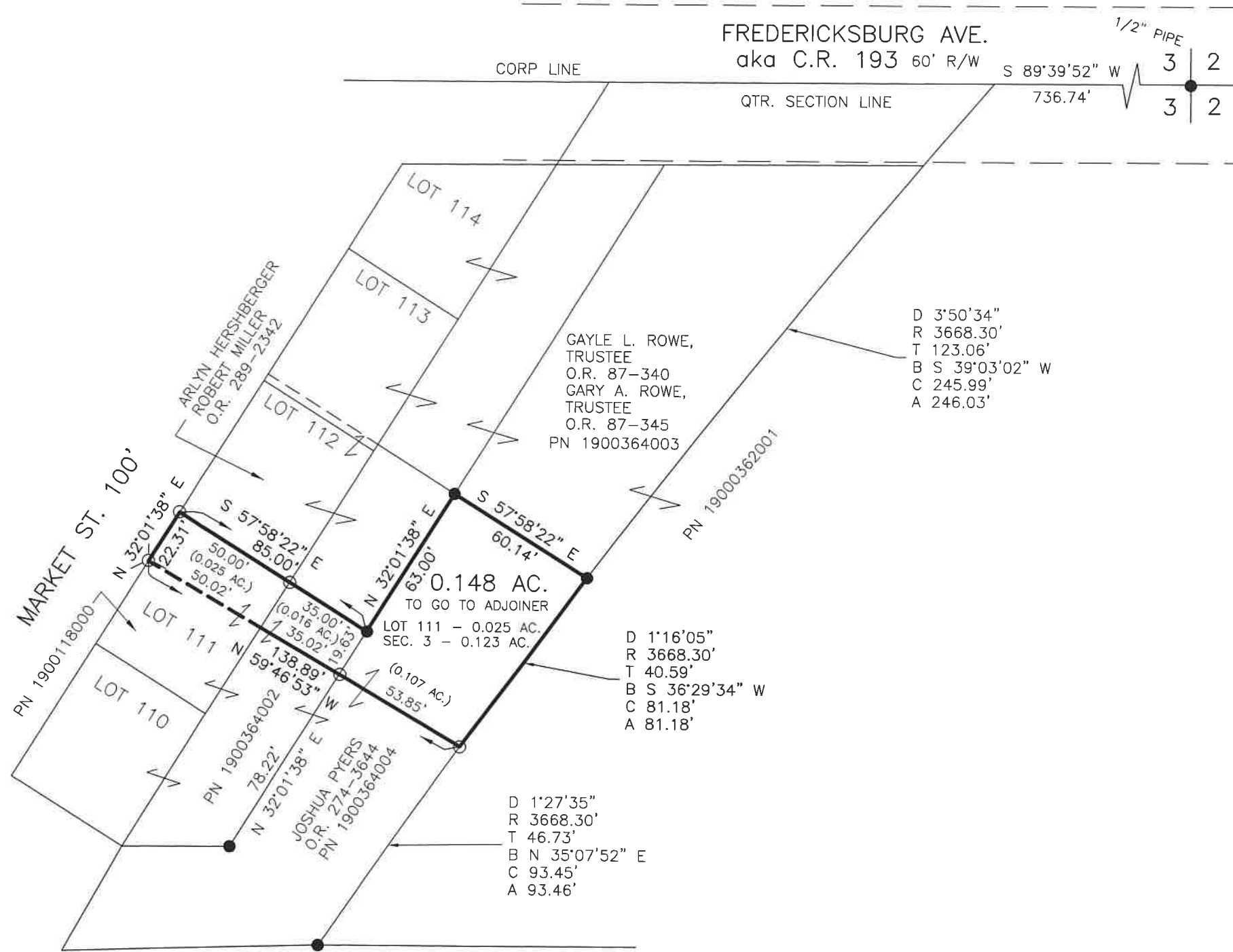
Donald C. Baker

DONALD C. BAKER P.S. 6938

DATE: NOV. 25, 2024

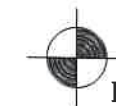
KES

FILE NAME: WORK7\S-570-24\CNK



20250000461
 B: 19 P: 5489
 FILED FOR RECORD IN
 HOLMES COUNTY, OH
 ANITA HALL, COUNTY RECORDER
 02/05/2025 10:31 AM
 SMALL PLAT . 40.00
 PAGES: 1
 ORV 291 Pg 1774

APPROVED FOR TRANSFER ONLY
 NO SUBDIVISION PLAT REQUIRED
 (O.R.C. 711.001 & 711.131)
 Lot(s) not for building unless
 approved by Board of Health
 HOLMES CO. PLANNING COMMISSION
 By AO Date 12/5/2024



BAKER SURVEYING, LLC
 138 N. CLAY STREET
 MILLERSBURG, OHIO 44654
 PH. 330-674-4788
 EMAIL: bakersurveying@gmail.com

Plat Approved
 Holmes County Map Office
 12/5/2024 MM