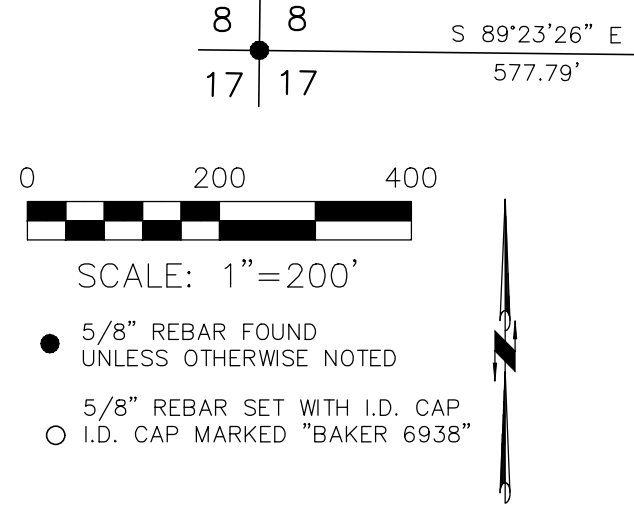


RIPLEY TOWNSHIP
 N.E. QTR. SECTION 17
 T-17 N; R-14 W
 HOLMES COUNTY, OHIO
 SURVEYED FOR: STEVE SIGLER

202500000455
 B: 19 P: 5488
 FILED FOR RECORD IN
 HOLMES COUNTY, OH
 ANITA HALL, COUNTY RECORDER
 02/05/2025 10:03 AM
 PLAT MED . 43.20
 PAGES: 1

ORV 291 Pg 1758
 ORV 291 Pg 1760
 ORV 291 Pg 1762



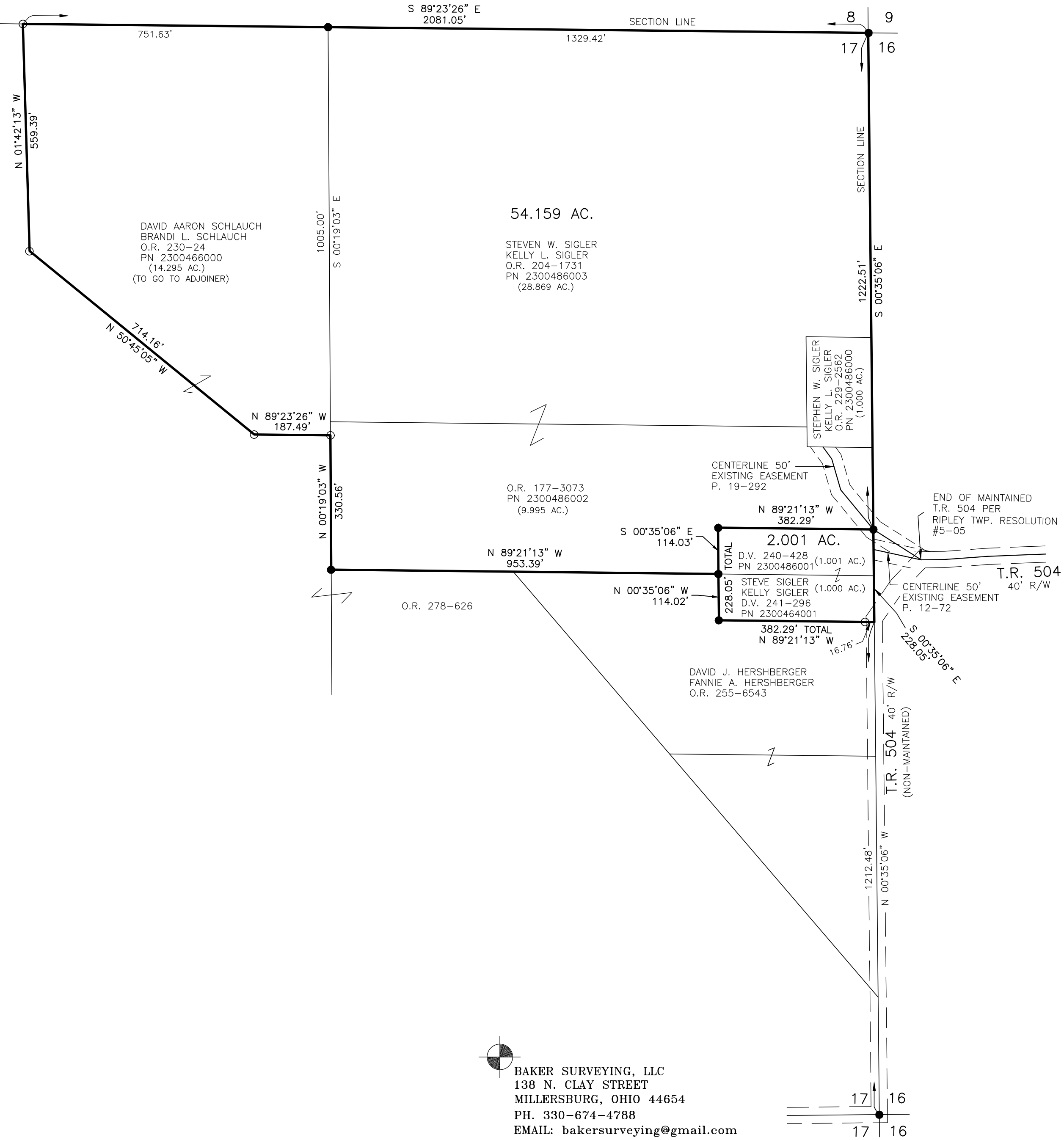
REFERENCES

- DEED VOL. 240 PAGE 428
- DEED VOL. 241 PAGE 296
- O.R. VOL. 230 PAGE 24
- O.R. VOL. 204 PAGE 1731
- O.R. VOL. 177 PAGE 3093
- PLAT VOL. 12 PAGE 72
- PLAT VOL. 19 PAGE 292
- PLAT VOL. 19 PAGE 1306

BASIS OF BEARINGS FROM OHIO STATE PLANE
 COORDINATE SYSTEM, NORTH ZONE,
 N.A.D. 83, 2011 ADJUSTMENT

MASTER PLAT

- ACTION 1) CONVEY 14.295 ACRES TO ADJOINER
- ACTION 2) CONVEY 2.001 ACRES
- ACTION 3) CONVEY 54.159 ACRES



I CERTIFY THIS SURVEY TO BE CORRECT
 TO THE BEST OF MY KNOWLEDGE.

Donald C. Baker
 DONALD C. BAKER P.S. 6938
 DATE: DEC. 24, 2024
 TAB\GRB
 FILE NAME: WORK7\S-646-24\CNK

BAKER SURVEYING, LLC
 138 N. CLAY STREET
 MILLERSBURG, OHIO 44654
 PH. 330-674-4788
 EMAIL: bakersurveying@gmail.com

APPROVED FOR TRANSFER ONLY
 NO SUBDIVISION PLAT REQUIRED
 (O.R.C. 711.001 & 711.131)
 Lot(s) not for building unless
 approved by Board of Health
 HOLMES CO. PLANNING COMMISSION
 By AO Date 1/7/2025

Plat Approved
 Holmes County Map Office
 1/7/2025 Rg